



3 WHITEHALL COURT

WESTMINSTER

900 SQ FT TO LET

3



A RARE OPPORTUNITY TO DISCOVER THIS UNIQUE LOCATION NEAR WHITEHALL.
THIS BOUTIQUE SUITE OF OFFICES ARE CLOSE TO THE HEART OF WESTMINSTER

ICONIC BUILDING

LOCATION

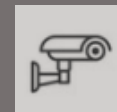
WHITEHALL COURT IS LOCATED ADJACENT TO EMBANKMENT UNDERGROUND STATION (NORTHERN, BAKERLOO, CIRCLE AND DISTRICT LINES) IN A QUIET TURNING OFF WHITEHALL PLACE. WESTMINSTER UNDERGROUND STATIONS AND HOUSES OF PARLIAMENT ARE WITHIN 5 MINUTES WALK AS IS CHARING CROSS MAINLINE STATION. WATERLOO MAINLINE STATION IS ALSO ONLY WITHIN 10 MINUTES WALK OVER THE THAMES FOOTBRIDGE. THERE ARE AN ABUNDANCE OF RESTAURANTS, CAFES, BARS AND THEATRES ALL ON THE DOORSTEP MAKING THIS ONE OF THE BEST CENTRAL LONDON LOCATIONS IN WHICH TO BE SITUATED.



CENTRAL LOCATION



NEARBY TRANSPORT



24 HOUR SECURITY

- ① HOUSES OF PARLIAMENT
- ② TRAFALGER SQUARE
- ③ WATERLOO STATION
- ④ CHARING CROSS AND EMBANKMENT STATIONS
- ⑤ WESTMINSTER STATION

DESCRIPTION

THE PROPERTY COMPRISES A GROUND FLOOR OFFICE WITH STUNNING PERIOD FEATURES AND IMPRESSIVE HIGH CEILINGS.

THE OFFICE SUITE COMING AVAILABLE IS WITHIN THE ICONIC BUILDING SHARED WITH THE FARMERS' CLUB (POTENTIAL FOR MEMBERSHIP) AND THE ROYAL HORSE-GUARDS HOTEL AS WELL AS THE NATIONAL LIBERAL CLUB.

THE BUILDING BENEFITS FROM 24 HOUR SECURITY AND RECEPTION SERVICES. THE OFFICE ALSO HAS USE OF A SMALL KITCHEN, ACCESS TO PRIVATE SHOWER AND BIKE STORAGE.

FLOOR AREA

GROUND FLOOR 900 SQ FT (83.6 SQ M)

TERM

NEW FLEXIBLE LEASE DIRECT FROM THE LANDLORD

RENT

£39,500 PER ANNUM



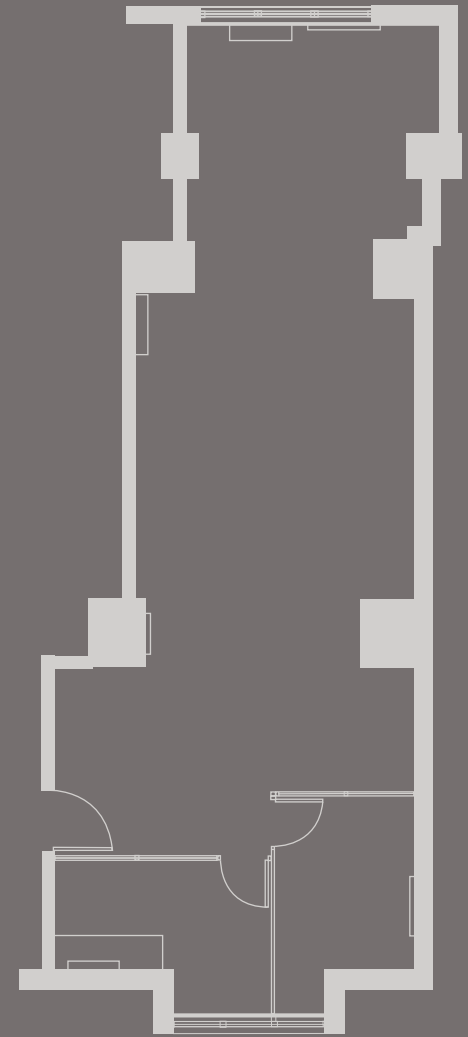


VERSATILE OFFICE SPACE

THIS VERSATILE OFFICE SPACE SEAMLESSLY BLENDS TRADITIONAL CHARM WITH MODERN FUNCTIONALITY. BOASTING HIGH CEILINGS THAT ENHANCE ITS AIRY AMBIANCE, THE AREA FEATURES A PRIVATE MEETING SPACE PERFECT FOR FOCUSED DISCUSSIONS. THE NEUTRAL DECOR CREATES A CALM AND PROFESSIONAL ATMOSPHERE, ALLOWING FOR EASY CUSTOMIZATION TO SUIT YOUR BRAND'S IDENTITY. IDEAL FOR TEAMS SEEKING FLEXIBILITY WITHOUT SACRIFICING CHARACTER, THIS OFFICE OFFERS BOTH COMFORT AND A SENSE OF PROFESSIONALISM.



FLOOR PLAN



900 SQ FT NOT TOO SCALE



HISTORY

WHITEHALL COURT WAS DESIGNED BY ALFRED WATERHOUSE AND ARCHER & GREEN IN THE MID 1880S AND IS ONE OF LONDON'S MOST HISTORIC LANDMARKS ON THE EMBANKMENT OF THE RIVER THAMES. WITH ITS FAIRY-TALE TOWERS AND SPIRES IT FORMS PART OF THE FAMOUS VIEW FROM THE BRIDGE IN ST. JAMES'S PARK LOOKING TOWARDS HORSE GUARDS PARADE. WHITEHALL COURT HOUSES THE NATIONAL LIBERAL CLUB, ROYAL HORSEGUARDS HOTEL AND FARMERS CLUB PLUS 120 RESIDENTIAL LUXURY APARTMENTS. WELL-KNOWN RESIDENTS HAVE INCLUDED GEORGE BERNARD SHAW, HERBERT KITCHENER, 1ST EARL KITCHENER, H. G. WELLS, OSCAR WILDE, WILLIAM GLADSTONE AND ALEC DOUGLAS-HOME.





THE FARMERS CLUB

THE FARMERS CLUB SITS WITHIN THE SAME BUILDING, OFFERING EXCELLENT DINING OPTIONS, ACCOMMODATION, FUNCTION ROOMS AND VIEWS OVER THE RIVER THAMES. MEMBERSHIP AVAILABLE SUBJECT TO TERMS AND CONDITIONS

BOOK YOUR VIEWING

STRICTLY BY ARRANGEMENT WITH SOLE AGENTS MEDWAY & LAW:

PLEASE CONTACT:



ASHLEY MEDWAY BSc (Hons) MRICS

DIRECTOR

T: 0207 043 0111

M: 07812 205327

E: ashley@medwayandlaw.co.uk



GEORGE IVES BSc (Hons)

COMMERCIAL AGENCY SURVEYOR

T: 0207 043 0111

M: 07468 431024

E: george@medwayandlaw.co.uk



Oliver Clift

ASSISTANT COMMERCIAL AGENCY SURVEYOR

T: 0207 043 0111

E: Oliver@medwayandlaw.co.uk



MEDWAY & LAW
CHARTERED SURVEYORS

MISREPRESENTATION ACT 1967

THESE PARTICULARS ARE INTENDED ONLY TO GIVE A FAIR DESCRIPTION OF THE PROPERTY AND DO NOT FORM THE BASIS OF A CONTRACT OR ANY PART THEREOF. THE DESCRIPTIONS, DIMENSIONS AND ALL OTHER INFORMATION ARE BELIEVED TO BE CORRECT BUT THEIR ACCURACY IS IN NO WAY GUARANTEED