

SELF-CONTAINED 1ST FLOOR OFFICE SPACE TO LET — 2,050sq ft

ELEVEN

STATION ROAD

Wilmslow, SK9 1BT



2,050 SQ FT 1ST FLOOR OFFICE SPACE



Central Location



Self Contained



Air Conditioning



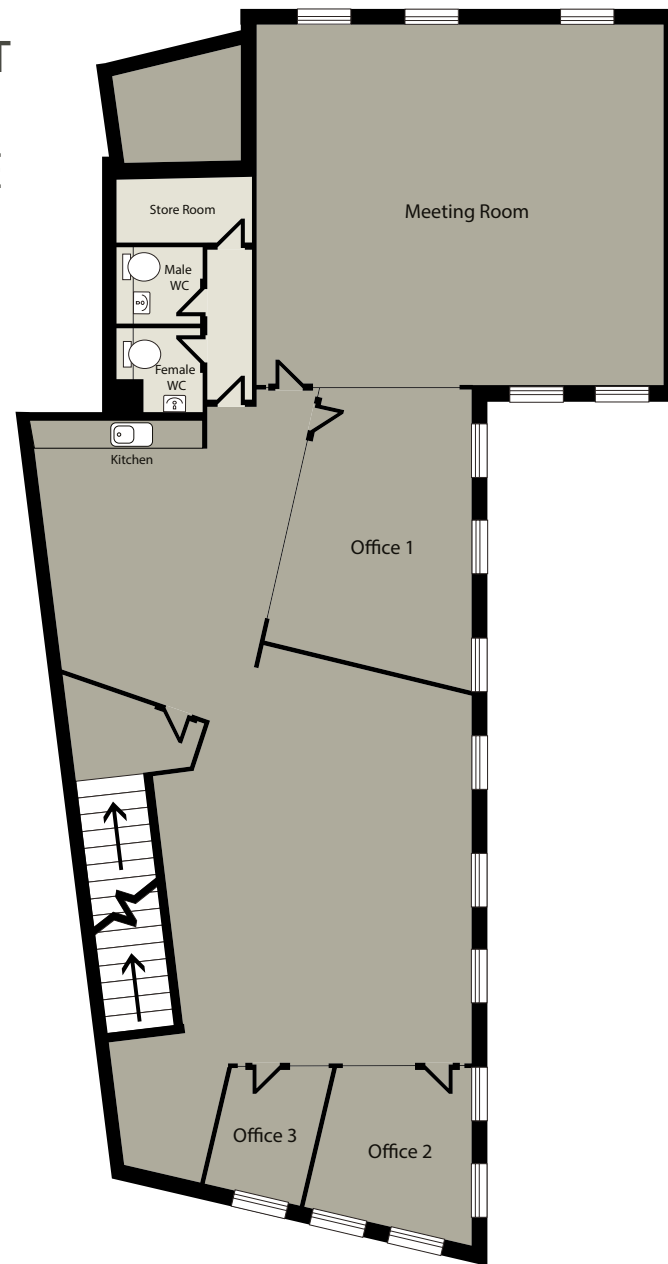
Part Fitted



Exposed Services



24/7 Access



11 Station Road is a self-contained first floor office space in the heart of Wilmslow town centre. The property is part-fitted and ready to move into a kitchen, air-conditioning and 24/7 access.

Office space in an unrivalled location...

The property benefits from an excellent location, right next to Wilmslow's mainline railway station. From here you can catch regular local services to Manchester Piccadilly, Stockport and Crewe - as well as regular trains to London Euston, with a journey duration of under 2 hours.



The vibrant town of Wilmslow...

Grove Street, the main shopping location within the town, is just seconds away from the property. The retail offering consists of the usual high street names amongst high-end retailers synonymous with Wilmslow's affluent demographic. You'll also find plenty of banks, supermarkets and pharmacies across the town centre.



The town is well known for its variety of places to eat and drink; with well-known names like Stolen Lamb, Piccolino's and Browns, as well as an offering of trendy, independent bars and restaurants.

ELEVEN

TRAVEL TIMES

BY CAR

M56
10 minutes

M60
10 minutes

Manchester Airport
12 minutes

Manchester City
Centre
25 minutes

BY TRAIN

Manchester City
Centre
31 minutes

Manchester Airport
15 minutes

London Euston
2 hours



DISCLAIMER: Whilst the statements contained in these particulars are given in good faith and as a general guide to the property, they do not form any part of an offer or contract. Neither the Lessor or their Agents can accept responsibility for them. Interested parties must satisfy themselves by inspection, or otherwise, as to the correctness of these particulars. (0925)

Orbit
Developments

01625 588200
www.orbit-developments.co.uk