

TO LET

UNIT 3 SANDPOOL FARM, POOLE KEYNES,
CIRENCESTER, GLOS GL7 6EA



204.82 M² (2,204 FT²)
WORKSHOP/BUSINESS UNIT
RURAL LOCATION

CONTACT RALPH WELLS 07957 739858

www.wbmproperty.co.uk

SWINDON 01793 232658 GLOUCESTER 01452 348915



LOCATION

Sandpool Farm is a well-established business location. It enjoys good road links and is in close proximity to the A419 via the Spine Road, with very easy access to Cirencester and the surrounding villages.

DESCRIPTION

The Unit is a business unit with a mix of office and storage space.

It further benefits from WC's and Kitchen facilities on the ground floor.

ACCOMMODATION

All measurements are approximate and given on a gross internal basis, in accordance with the RICS Code of Measuring Practice.

Unit 1

Ground Floor		
Workshop/Storage	102.41 m ²	1,102 ft ²
First Floor Office	102.41 m ²	1,102 ft ²
Total	204.82 m²	2,204 ft²

TENURE

The premises are available by way of a sub-lease for a term to be agreed.

PRICE

The current passing rent is £20,000 pa. Please contact the agents for further information.

BUSINESS RATES

Please contact the agents for further information.

EPC

An Energy Performance Certificate is available upon request.

The premises has an energy performance rating of B:48.

LEGAL COSTS

Each party to bear its own legal costs incurred in the transaction.

VIEWING

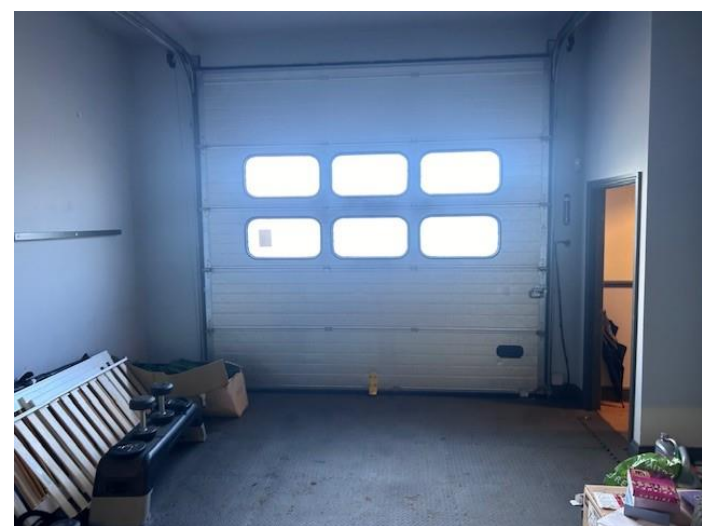
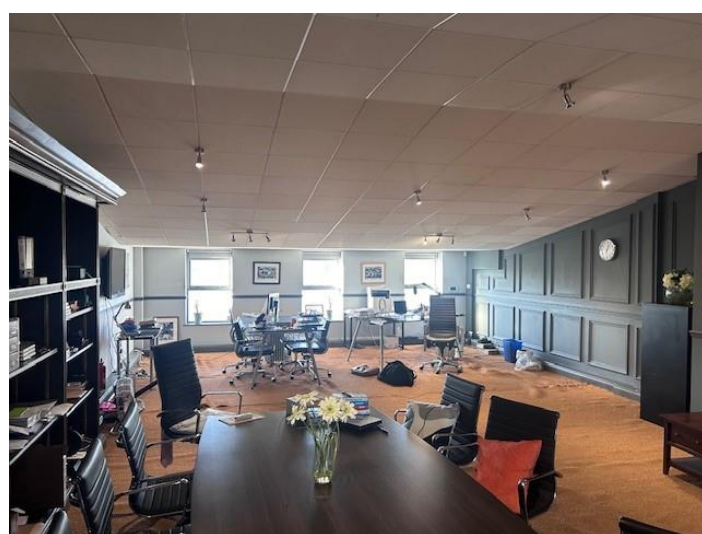
Viewing and further information is strictly by prior appointment through the agents.

Please contact:
Ralph Wells 07957 739 858
E: ralph@wbmproperty.co.uk

11 Dorcan Business Village, Swindon, Wiltshire SN3 5HY

IMPORTANT NOTICE: These particulars do not constitute any offer or contract and although they are believed to be correct, their accuracy cannot be guaranteed, and they are expressly excluded from any contract. All measurements on these details are approximate and cannot be relied upon as statements or representations of fact.

Registered Office: WBM Commercial Property Limited, Building 2A, D Site, Kemble Airfield, Kemble, Cirencester, Gloucestershire GL7 6NA



11 Dorcan Business Village, Swindon, Wiltshire SN3 5HY

IMPORTANT NOTICE: These particulars do not constitute any offer or contract and although they are believed to be correct, their accuracy cannot be guaranteed, and they are expressly excluded from any contract. All measurements on these details are approximate and cannot be relied upon as statements or representations of fact.

Registered Office: WBM Commercial Property Limited, Building 2A, D Site, Kemble Airfield, Kemble, Cirencester, Gloucestershire GL7 6NA