



1210 Lansdowne Court
Gloucester Business Park
GL3 4AB

Refurbished Office Space
Part Ground Floor To Let
2,326 Sq Ft (217 Sq M)



1210 Lansdowne Court comprises a high quality, two storey office building with feature brick and render elevations under a pitched tiled roof.

The available suite comprises part of the ground floor and has been refurbished to a high standard including:



Raised floors




EPC rating C (64)



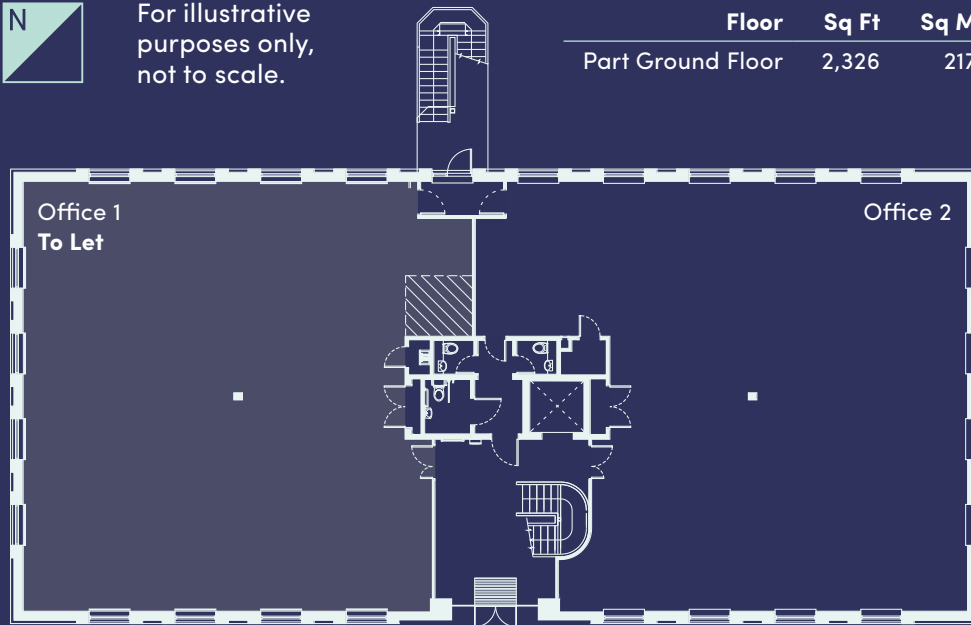
Open plan floor plates



Suspended ceilings

 For illustrative purposes only, not to scale.

Floor	Sq Ft	Sq M
Part Ground Floor	2,326	217



A centrally located service core provides communal services for the building



LED lighting



Centrally heated



The suite has 12 car spaces



Business Rates

Further information on the properties Rateable Value are available from the agents.

VAT

The building has been elected for VAT.

Availability

The Ground Floor Suite is available on a leasehold basis.

Full details are available from the agents upon request

CBRE

Alex Hayman
07827 252 847
alex.hayman@cbre.com

Richard Kidd
07827 230 295
richard.kidd@cbre.com

alderking
PROPERTY CONSULTANTS

Adrian Rowley
07771 874 175
arowley@alderking.com

ESR

STRAITS REAL ESTATE

gloucesterbusinesspark.co.uk