



**CROSSWAYS 241**

**SUSTAINABLY DESIGNED**

Crossways Commercial Park, Clipper Boulevard, Dartford, DA2 6QB

# FUTURE-READY LOGISTICS SPACE



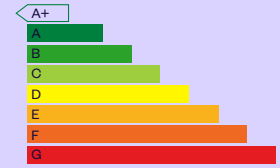
Goodman has a track record of sustainable design, development and innovation.

Our properties are designed to respond to changing customer needs and reflect our commitment to reducing energy use, improving efficiency and maximising the sustainable use of resources.

This guide provides an overview of the features included at Crossways 241 – from our fabric-first approach to design, to our investment in on-site renewables.



# STANDARDS AND ACCREDITATIONS



## Energy Performance Certificate (EPC) Rating of A+

Crossways 241 generates more energy than it uses, reducing carbon and feeding unused energy back to the grid. This is reflected in its negative EPC score:

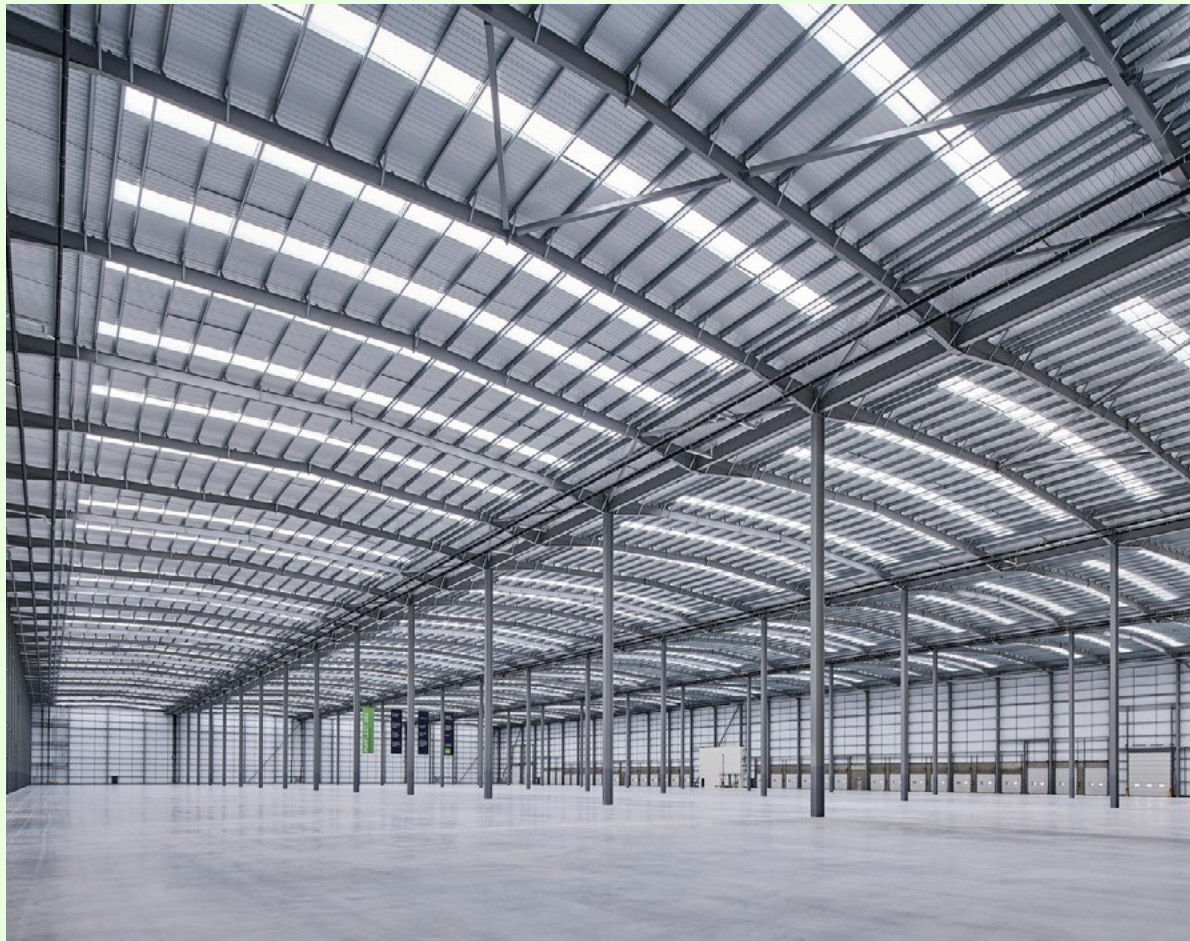
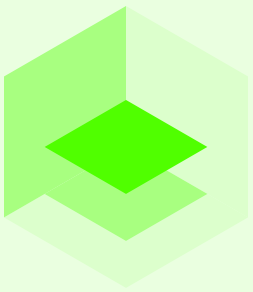
**EPC A+** (score of -12)

## BREEAM®

★★★★☆

BREEAM 'Excellent' rating (Shell and Core New Construction 2018 Industrial)

**78.1%** BREEAM score



# FABRIC-FIRST DESIGN

## 'Fridge ready' cladding system for chilled and ambient storage

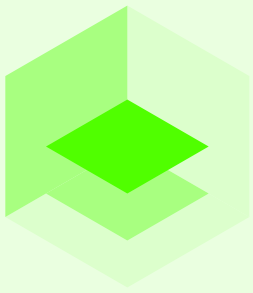
The highly insulated CA Twin Therm® Chronus® Ready roof and wall cladding – with U values of 0.35w/m<sup>2</sup>K (walls) and 0.23w/m<sup>2</sup>K (roof) – can be adapted with ease to meet customer requirements for chilled space as low as 0°C, eliminating the requirement for a 'box within a box' design.

The system can facilitate an easy change to chill store with quick release external lights, allowing the voids to be filled with insulation, eliminating solar gain and improving the thermal performance of the roof.

## Superior air tightness

Crossways 241's excellent thermal performance ensures air tightness far in excess of the Building Regulations requirement of 10m<sup>3</sup>/hr/m<sup>2</sup>. This enhanced air permeability leads to improved energy conservation:

+ **Crossways 241**; 1.38m<sup>3</sup>/h.m<sup>2</sup>@50Pa



## Carbon neutral building envelope

The Tata Steel CA Twin Therm® Chronus® Ready system with Confidex Sustain® guarantee makes the building envelope carbon neutral – a first in the world. Tata also provides full traceability and composition information for all elements of the pre-finished steel and cladding system.

## Curved roof

Whilst providing the same clear height to haunch as a traditional pitch roof, the curved roof has a lower ridge height with less volume to heat/cool. This leads to energy savings and reduced running costs.

## Maximising rooflights

12% of the roof area features rooflights that provide natural daylight into the building.

## Hi-reflective liner

The paint on the roof and wall cladding's inner liner panel is a brighter white, providing improved reflection properties. This results in less need for artificial light and contributes to reduced running costs.

## Anti-sun tinting to windows

Minimum G values and light transmittance values have been specified to prevent excessive solar gain while allowing sufficient natural daylight through. This helps to reduce lighting and cooling costs.

## LOW CARBON DESIGN

Embodied Carbon Emissions were assessed and reduced at the design stage, with elements of the building fabric accredited as carbon neutral to create a carbon light building. The remaining Embodied Carbon – from 'Cradle to Practical Completion' – is then offset through accredited schemes.





## Solar photovoltaics (PV)

Crossways 241 features a full rooftop array of solar PV, helping to offset the building's power needs.

There is the opportunity to purchase the solar energy generated, which is capped so it never exceeds the delivered 'grid' energy cost.

**Crossways 241**

**1,036kWp**

system generating  
905,900kWh

## SolarWall®

The solar air heating system provides free heating to supplement the office heating system. With a modification, this can be used in the warehouse or used for cooling with additional plant. The dark barcoding of the cladding is designed to absorb the maximum sunlight, with the building's southern elevation best placed to capture the full effect.

**Crossways 241**

**129.15m<sup>2</sup>**

## Solar thermal heating

Used to provide hot water, this is generated by a roof-mounted solar thermal panel, delivering hot water to the core areas of the building.

**INVESTING IN  
RENEWABLES**



# ACHIEVING GREATER ENERGY EFFICIENCY



## Low NOx boiler

An extremely efficient low NOx boiler is used as a back-up to the solar thermal hot water system. Maximum NOx emissions are not to exceed 24mg/kWh and an efficiency greater than 85% can be achieved at full output, with seasonal efficiency greater than 95%.

## VRF / VRV comfort cooling to the offices

This harnesses the unwanted heat from areas that require cooling and either stores it or transfers it to rooms that require heating. By using recovered ambient heat energy rather than heating cold air from outside, the day-to-day running costs of a VRF / VRV system with heat recovery technology are much lower than other alternatives. Over the lifetime of the system, significant savings can be made and with lower power consumption, these systems are also more environmentally-friendly.



## Seasonal commissioning

Seasonal commissioning of mechanical and electrical systems within the first 12 months of occupation ensures efficient running and keeps costs at a minimum.

## Electric vehicle (EV) charging points

Crossways 241 features EV charging points, with infrastructure to add further charging points to car parking bays and HGV parking spaces:

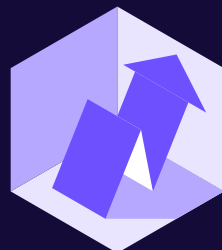
- + **Crossways 241:** 12 external car charging points (2 x double 22kW, 2 x double 7kW and 2 x double 3.7kW)

## LED lighting

LED lighting is used throughout the building. This includes office lighting with movement and daylight sensors, external lighting controlled by a timeclock – enabling the lighting to come on / off at certain times – and LED dock lighting. The building's passenger lift is also electrically efficient, operating in a 'standby' condition when idle, with all lighting and displays being LED lit.

## Smart meters

Smart meters are installed to monitor energy and water use by area and by floor. Data access and analysis is provided via a Cloud-based system, providing customers with behavioural insights and enabling them to maximise operational efficiency.





# SUSTAINABLE MATERIALS

## Carpet and ceiling tiles

Ceiling tiles in the office areas are made with a high percentage of recycled content, while the carpet tiles feature a bio-based backing and are certified as carbon neutral.

## Timber

All timber products come from sustainable sources, with Chain of Custody Certification provided by the Forest Stewardship Council (FSC).



Construction materials and component choices have all been made in-line with the BRE's Green Guide to Specification, ensuring the lowest environmental impacts possible.

Materials have been chosen for their durability but also their ability to be reused at the end of their operational life:

- + The roof and wall cladding system has a 25-year system guarantee and 40-year guarantee for the coating
- + When physically obsolete, materials specified are fully-recyclable (e.g. the steel frame), with many products having dedicated take-back schemes.



# QUALITY, LONGEVITY AND END-OF-LIFE RECYCLING

# WATER CONSERVATION AND BIODIVERSITY



## Water saving devices

This includes leak detection on the incoming water supply, waterless urinals, low flush WCs and sensor activated touch-free taps to wash hand basins.

## Rainwater harvesting

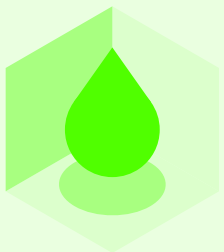
5,000 litre tanks provide grey water flushing to WCs and watering points for landscape maintenance and bin-store cleaning.

## Sustainable urban drainage system

Underground drainage is attenuated, slowing the rate of storm water entering the drainage system and therefore reducing flood risk. All surface water run off goes through an interceptor prior to discharge off site.

## Biodiversity net gain

Crossways Commercial Park has enhanced a brownfield site with very low ecological value, achieving improved biodiversity through careful and sympathetic landscaping. This has included the planting of 161 native trees and integrating the development with the wider 300-acre business park, river foreshore and its ecology habitats, ponds and landscaped areas.



# CONTACT US



## ENQUIRE NOW

Chris Beamer  
Associate Director, Development  
[chris.beamer@goodman.com](mailto:chris.beamer@goodman.com)  
07500 779249



Dominic Whitfield  
[dwhitfield@savills.com](mailto:dwhitfield@savills.com)  
07870 555936

Harry Stoneham  
[harry.stoneham@savills.com](mailto:harry.stoneham@savills.com)  
07870 999263



Toby King-Thompson  
[toby.kingthompson@cbre.com](mailto:toby.kingthompson@cbre.com)  
07919 145652

Hannah Metcalfe  
[hannah.metcalfe@cbre.com](mailto:hannah.metcalfe@cbre.com)  
07500 990467



James Haestier  
[james.haestier@colliers.com](mailto:james.haestier@colliers.com)  
07818 038009

Tim Harding  
[tim.harding@colliers.com](mailto:tim.harding@colliers.com)  
07860 180328

0203 426 0800 | [crosswayscp.com](http://crosswayscp.com) | [uk.goodman.com](http://uk.goodman.com)

This document has been prepared by Goodman Logistics Developments (UK) Limited (registered in England with company number 3921188) ("Goodman") for general information purposes only. Whilst every care has been taken in relation to its accuracy, no warranty of accuracy is given or implied. Images used in this document have been included for the purposes of enabling you to visualise the development concepts. Further, you should obtain your own independent advice before making any decisions about any of the properties referred to in this document. These particulars are believed to be correct at publication date (March 2026), but their accuracy is in no way guaranteed neither do they form part of any contract. All areas, distances and travel times are approximate.