

# 66 Wardour Street

London, United Kingdom,

66 Wardour Street is located in the heart of Soho, one of London's most vibrant and well-connected business districts, with Tottenham Court Road, Leicester Square and Piccadilly Circus Underground stations all within easy walking distance, providing access to multiple tube lines including the Elizabeth line. The building further benefits from an attractive reception area, 24-hour access, demised WCs, and lift access throughout.



Natural Light



Lift



24 Hour access



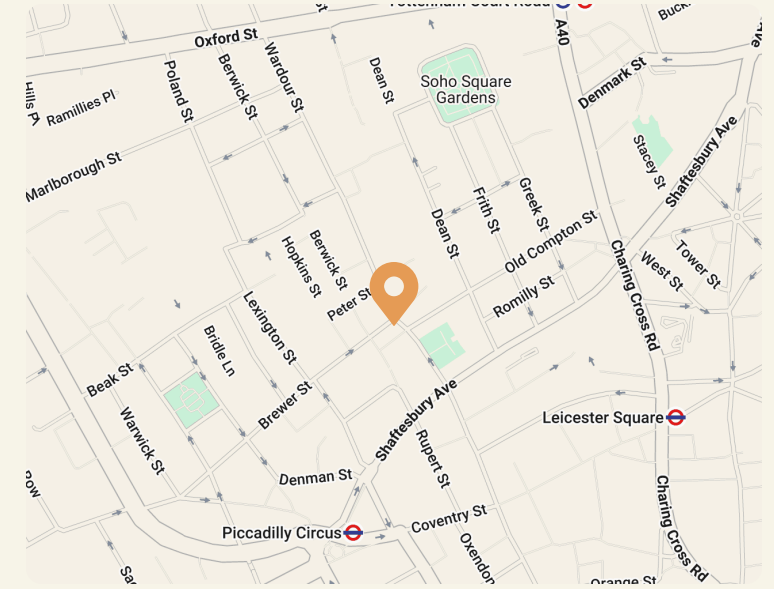
Air Conditioning



Shower



Wifi



## Transport Links

Piccadilly Circus | 4 min. walk



Tottenham Court Road | 5 min. walk



Leicester Square | 5 min. walk



66 Wardour Street

## 4th floor

Size

2,240 sq ft

Min. Term

12 months

Current State

Fully fitted

Legal structure

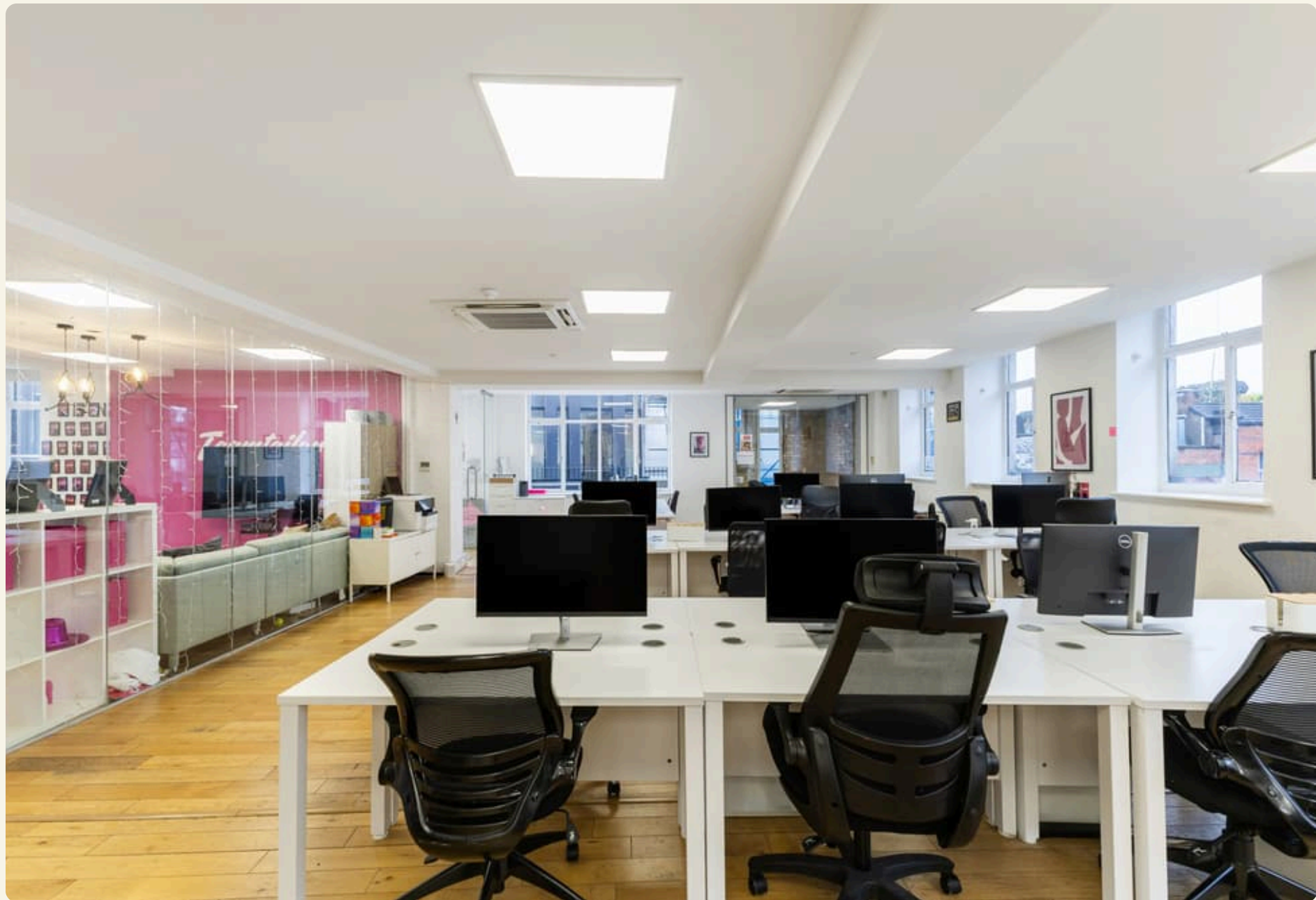
Lease + MSA

Price (pcm) + VAT

£28,050

Price (psf) + VAT

£150



66 Wardour Street

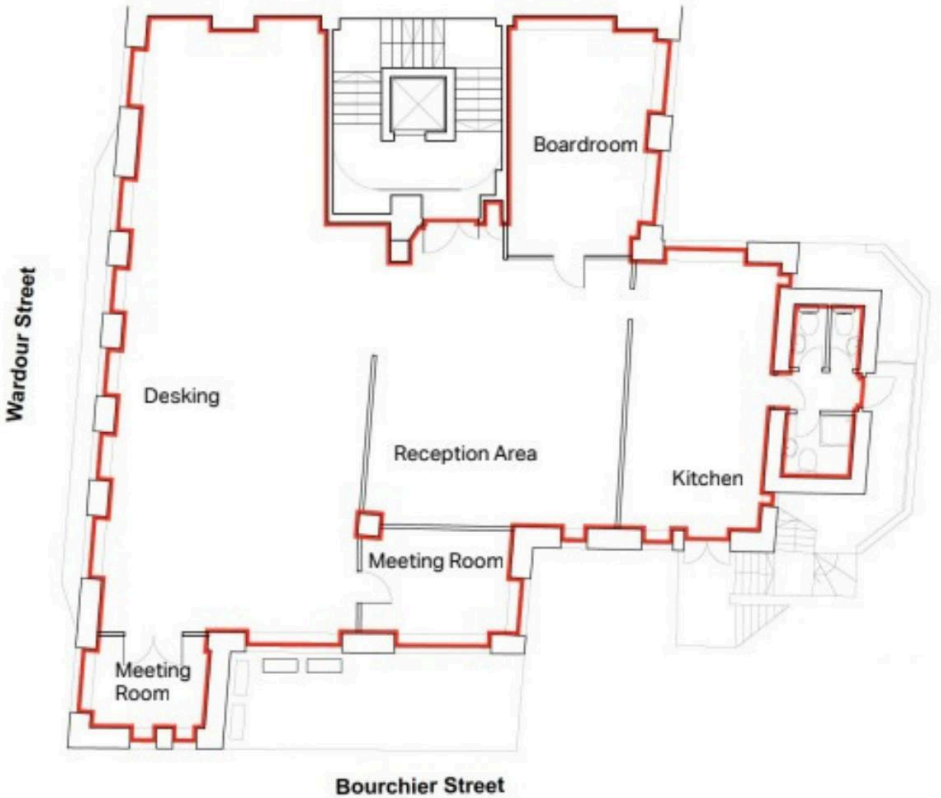
# 4th floor



66 Wardour Street

# 4th floor

Desks	Meeting Rooms	Tea Point
36	1	2



# Everything you need in a workspace, sorted

Kitt's core package includes the following, but we'll always customise services and support to your unique needs.



Rent

Business rates

Service charge

Building insurance

Demise electricity

Broadband (200 Mbps)



Fit out and furniture

Branding and accessories

Daily cleaning and waste removal

Office management app

Planned and preventative maintenance

Health and safety

