

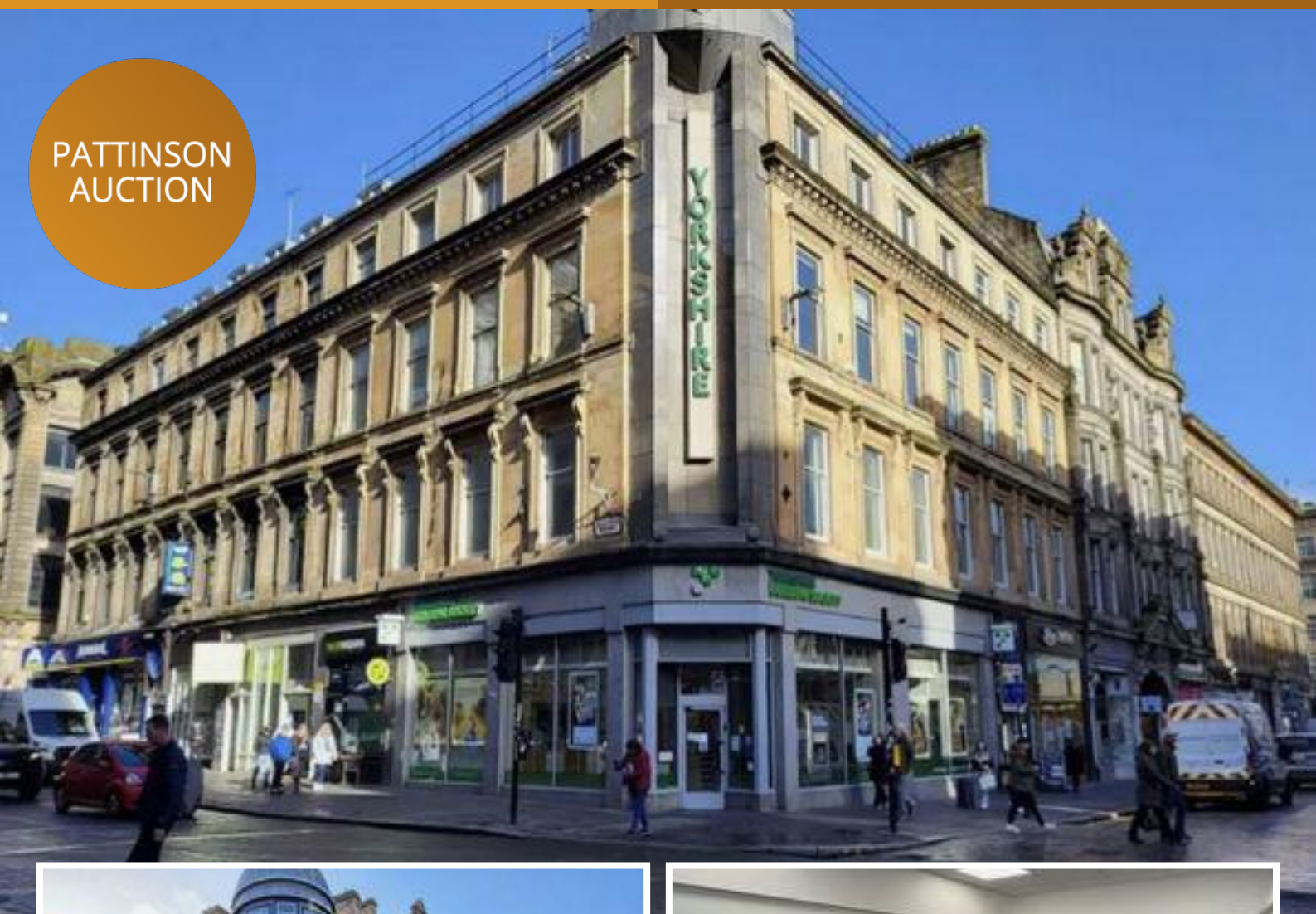
Offices in G2

Renfield Street, Glasgow
Glasgow City, G2 5AL

- ✓ LOVELY LISTED BUILDING
- ✓ AVAILABLE IMMEDIATELY
- ✓ NCP PARKING CLOSE BY

£35,000 Starting Bid

PATTINSON
AUCTION



Summary

- Property Type: Offices - Parking: None
- Price: Starting Bid £35,000

Description

FULLY REFURBISHED OFFICE SUITE IN 100% PRIME LOCATION WITHIN GLASGOW CITY CENTRE

Set directly opposite Glasgow Central Station.

Potential rental income of over £600pcm (£7,200 per annum)

Former Dental Surgery in Glasgow's premier location has been fully refurbished to an excellent standard

3rd FLOOR OFFICE SPACE

118 SQ FT

LOVELY LISTED BUILDING

JUST RENOVATED

AVAILABLE IMMEDIATELY

OPPOSITE GLASGOW CENTRAL TRAIN STATION

NCP PARKING CLOSE BY

Description

A 3rd floor office - 118 SQ FT - not long ago refurbished - Former Dental Surgery in Glasgow's premier location



Location

Set directly opposite Glasgow Central Station



Additional information

Should you wish to arrange a viewing please contact the team on 01917371154





Renfield Street, Glasgow, Glasgow City, G2 5AL

Contact your local branch today for more information on this property:

Keith Pattinson Silverlink, Wallsend, Tyne and Wear, NE28 9NY, Tel: 0191 737 1154 , www.pattinson.co.uk

These particulars, whilst believed to be accurate are set out as a general outline only for guidance and do not constitute any part of an offer or contract. Intending purchasers should not rely on them as statements of representation of fact, but must satisfy themselves by inspection or otherwise as to their accuracy. No person in this firm's employment has the authority to make or give any representation or warranty in respect of the property.

