



22
ST JOHN

Welcome to St John Street

Welcome to 22 St John Street, sophisticated workspace, elegantly restyled retaining the heritage of this historic building.

Nestled between Deansgate and Spinningfields in Manchester City Centre - 22 St John Street is the perfect location for your business.

Our private offices are made to suit you and your business needs. You can work how you want, where you want, with a range of communal spaces available over 3 floors for you and your team.



The Building

22 St John Street is a stunning Grade II listed building, located on the only surviving Georgian terraced street in central Manchester.

The property has been fully remodelled to provide sustainable private office suites for the city's thriving business community.



Business
Lounge



Meeting
Rooms



Heritage
Building



Original
Features



Lift
Access



Zoom
Rooms



Cycle
Storage



Car
Parking



Shower &
Changing room



Private Offices

We have created modern, flexible workspace with offices available from 3 people upwards. Whilst retaining the stunning heritage features of the property, we've incorporated new spaces to ensure you can work as efficiently as possible.



Fully
Fitted-out



Ultra-fast
Wifi



Superior Acoustic
Performance



Luxury
Design



Individual Office
Temperature
Control



Excellent
Natural Daylight



Biophilically
Designed



Indoor
Air Quality

22 St John Street, Manchester, M3 4EB



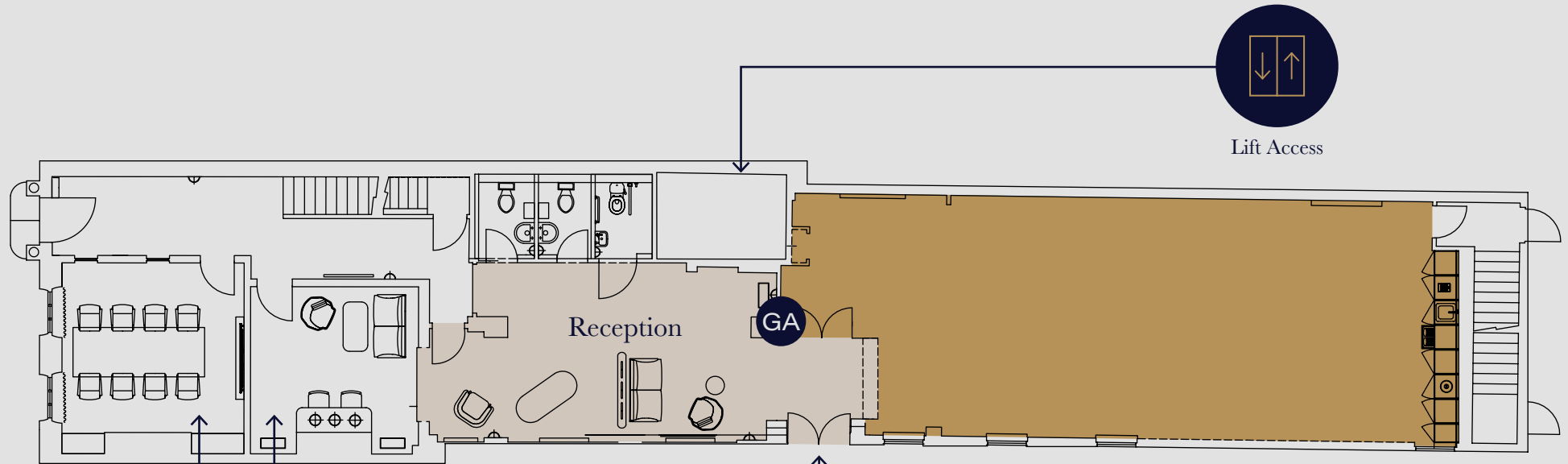
Your Building



22
ST JOHN



Ground Floor



Our ground floor suite gives you the opportunity to design your space to fit your requirements with a selection of furniture packages available.

Suite	Desks
GA	18



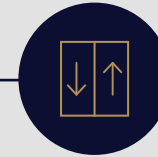
Meeting Rooms



Business Lounge



Car Park

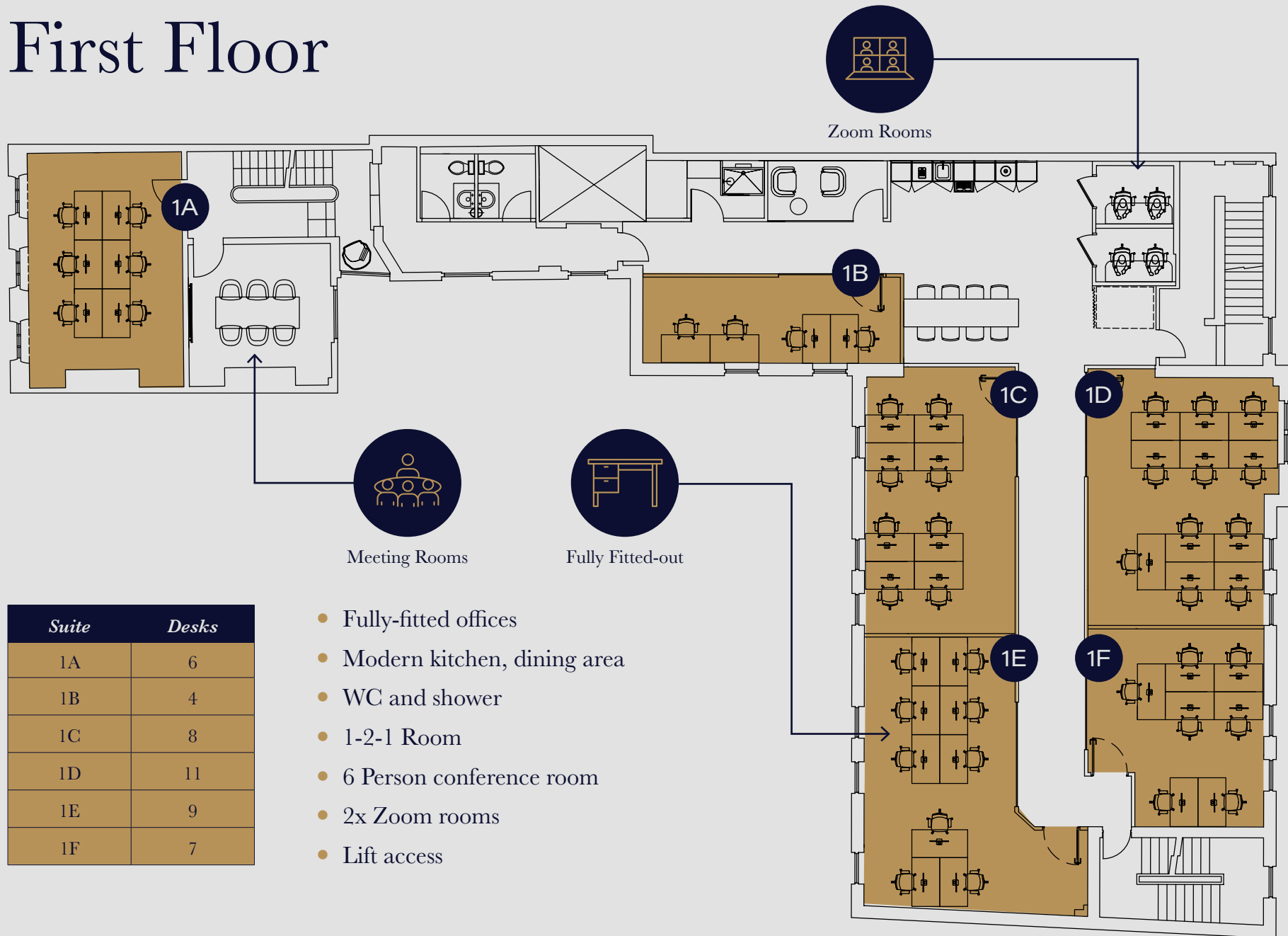


Lift Access

Welcome to the Building



First Floor



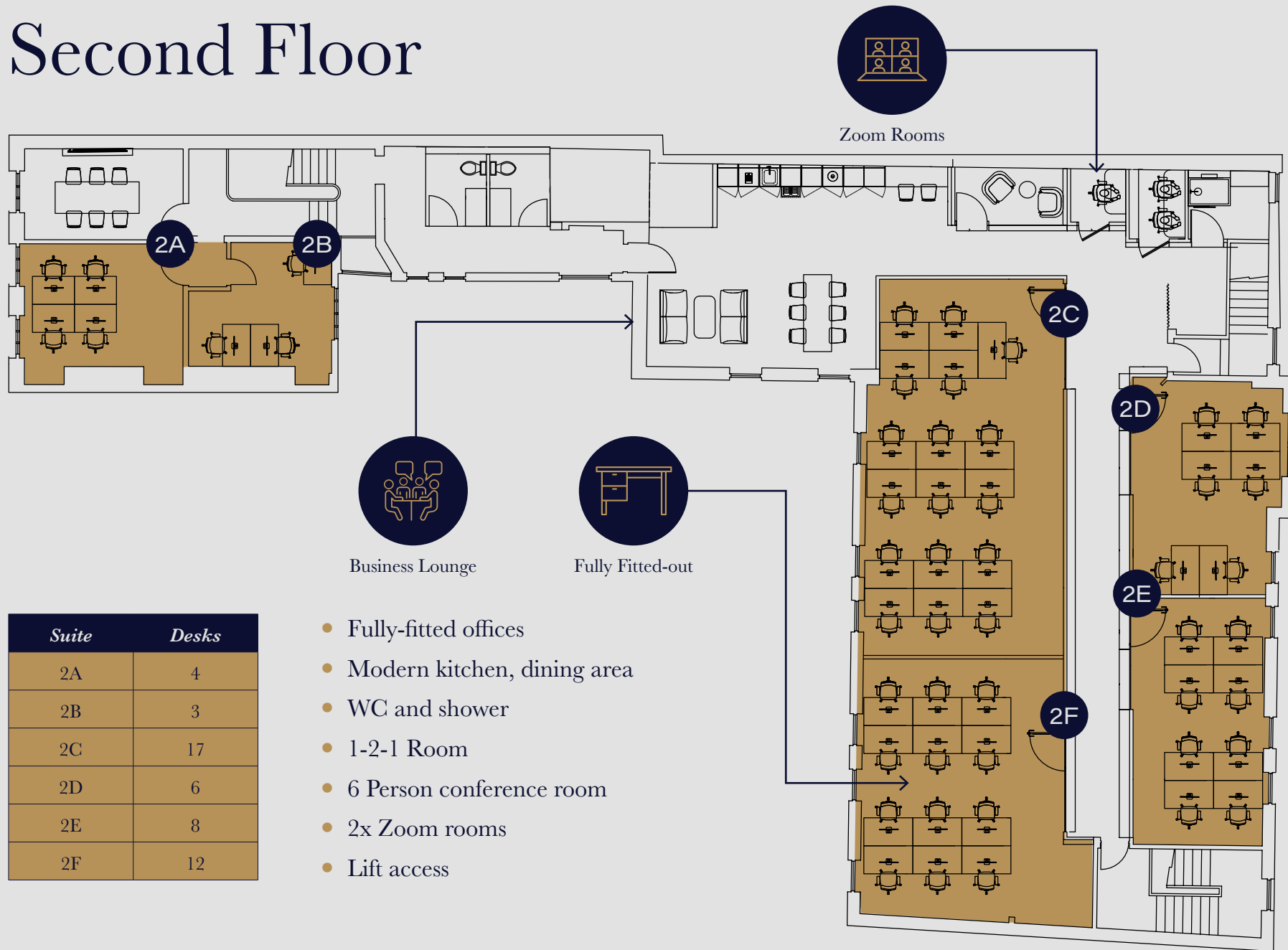
Suite	Desks
1A	6
1B	4
1C	8
1D	11
1E	9
1F	7

- Fully-fitted offices
- Modern kitchen, dining area
- WC and shower
- 1-2-1 Room
- 6 Person conference room
- 2x Zoom rooms
- Lift access

Kitchen Area



Second Floor



Suite	Desks
2A	4
2B	3
2C	17
2D	6
2E	8
2F	12

- Fully-fitted offices
- Modern kitchen, dining area
- WC and shower
- 1-2-1 Room
- 6 Person conference room
- 2x Zoom rooms
- Lift access

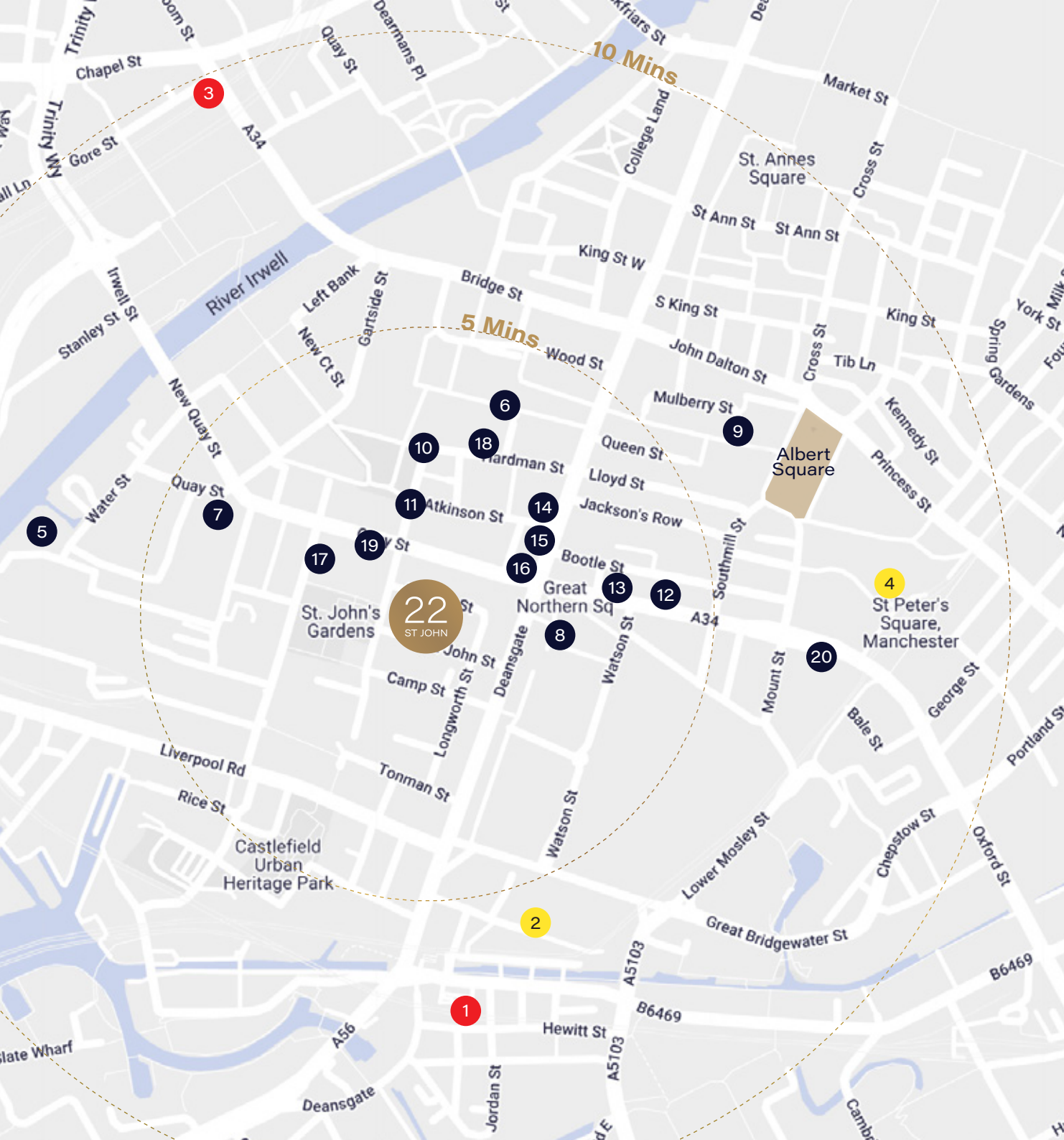
Communal Space



Your Neighbourhood



Location



- 1 Deansgate Train Station
- 2 Deansgate Metrolink Stop
- 3 Salford Central Train Station
- 4 St Peter's Square Metrolink Stop
- 5 St Johns - Factory
- 6 Spinningfields
- 7 Soho House
- 8 Great Northern
- 9 Maray
- 10 The Ivy
- 11 20 Stories
- 12 Rudy's
- 13 Albert's Schloss
- 14 Hawksmoor
- 15 Federal
- 16 Flat Iron Steak
- 17 Barrys Bootcamp
- 18 Pure Gym
- 19 Everyman
- 20 Midland Hotel



Walking

- Spinningfields - 3 mins
- St Peters Square - 6 mins
- Market Street - 8 mins
- Piccadilly Train Station - 15 mins



Cycling

- Oxford Road Station - 5 mins
- Northern Quarter - 8 mins
- Castlefield - 8 mins
- Piccadilly Train Station - 10 mins



Train

- Oxford Road Station - 5 mins
- Salford Central - 5 mins
- Piccadilly Train Station - 10 mins
- London Euston Station - 160 mins



Metrolink

- Piccadilly Train Station - 10 mins
- Media City UK - 15 mins
- Chorlton - 20 mins
- Manchester Airport - 40 mins



Airport

- Manchester Airport - 30 mins
- City Airport and Heliport - 40 mins
- Liverpool John Lennon - 64 mins



Taxi

- Castlefield - 5 mins
- Piccadilly Train Station - 10 mins
- The Northern Quarter - 8 mins



CONTACT US



CITRUS COMMERCIAL CIRCLE

Business Hours

Mon – Fri: 9AM – 5PM

Sat – Sun: 9AM – 5PM (Out of Office)

North Manchester Office: Atrium House, 574 Manchester Road, Bury, BL9 9SW

Central Manchester Office: 10 St John St, Deansgate, Central Manchester, M3 4DY

Contact Number: 0161 383 1806

Email: info@citruscommercialcircle.co.uk