

LAND AT QUEEN STREET, REDCAR, TS10 1BT

FOR SALE – POTENTIAL DEVELOPMENT LAND ON THE NORTH EAST COAST



Rainbow Park

THOMAS : STEVENSON

CHARTERED SURVEYORS : COMMERCIAL PROPERTY CONSULTANTS

Wellington House : Wellington Court : Preston Farm Business Park : Stockton-on-Tees : TS18 3TA
Tel: 01642 713303 : Fax: 01642 711177 : Email: admin@thomas-stevenson.co.uk

www.thomas-stevenson.co.uk

LAND AT QUEEN STREET, REDCAR, TS10 1BT

FOR SALE: POTENTIAL RESIDENTIAL DEVELOPMENT LAND

LOCATION

The subject property is located in Redcar, a medium sized town, situated on the North Sea coast approximately 4 miles north-west of Saltburn, 7.5 miles north east of Middlesbrough and 5 miles north of Guisborough.

Occupying a rectangular strip of grassland to the west of Queen Street and north of High Street West. The land is situated in a mixed use area 0.3 miles south of the North Sea coast, 0.15 miles south of Coatham Adventure Play Park, TunedIn, Majuba Beach & Car Park and adjacent to Coatham Green. Properties to the south, west and east of the land are in residential use.

DESCRIPTION

The property comprises a 0.48 acre potential development site formerly in use as a terrace of houses and now forming part of Coatham Green. The site is predominantly flat and rectangular in shape.

Suitable for residential development subject to the necessary planning and consents, the land is bound by Coatham Green to the north, Queen Street to the east and High Street West to the south.

ACCOMMODATION

The site provides the following areas:

Site: 0.48 acres 0.20 hectares

PROPOSED TERMS

The site is available for sale on a Freehold basis and offers in the region of £250,000 are invited.

INTERESTED PARTIES

Interested parties are to undertake their own enquiries regarding service provision and planning.

PLANNING

The site is located inside the development limits for Redcar as per the Redcar and Cleveland Local Plan Policies Map

LEGAL COSTS

Each party is responsible for their own legal costs.

LAND AT QUEEN STREET, REDCAR, TS10 1BT

FOR SALE: POTENTIAL RESIDENTIAL DEVELOPMENT LAND

VAT

All prices and rents quoted are exclusive of, but may be subject to, VAT.

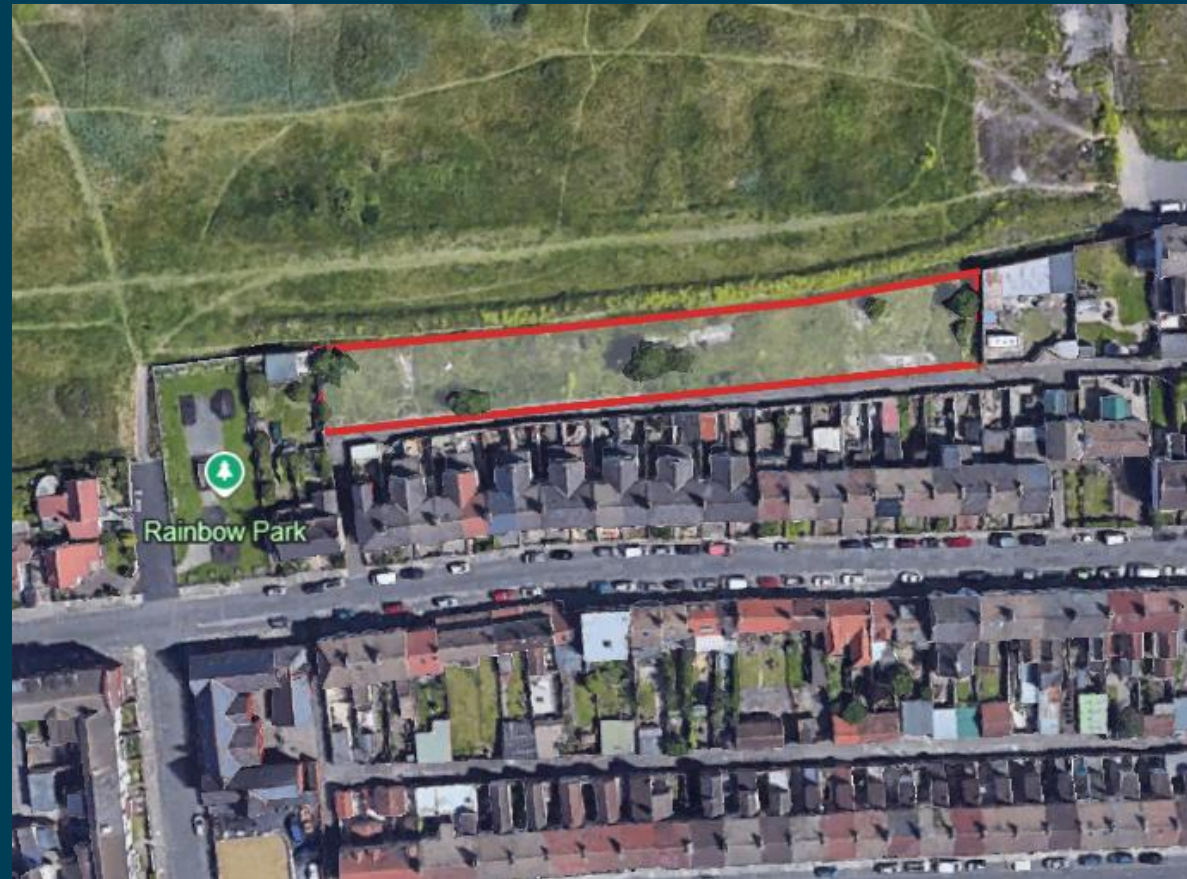
VIEWING

All viewings are strictly by prior appointment.

Contact: Thomas: Stevenson - 01642 713303

Email: jack@thomas-Stevenson.co.uk

LAND AT QUEEN STREET, REDCAR, TS10 1BT
FOR SALE: POTENTIAL RESIDENTIAL DEVELOPMENT LAND

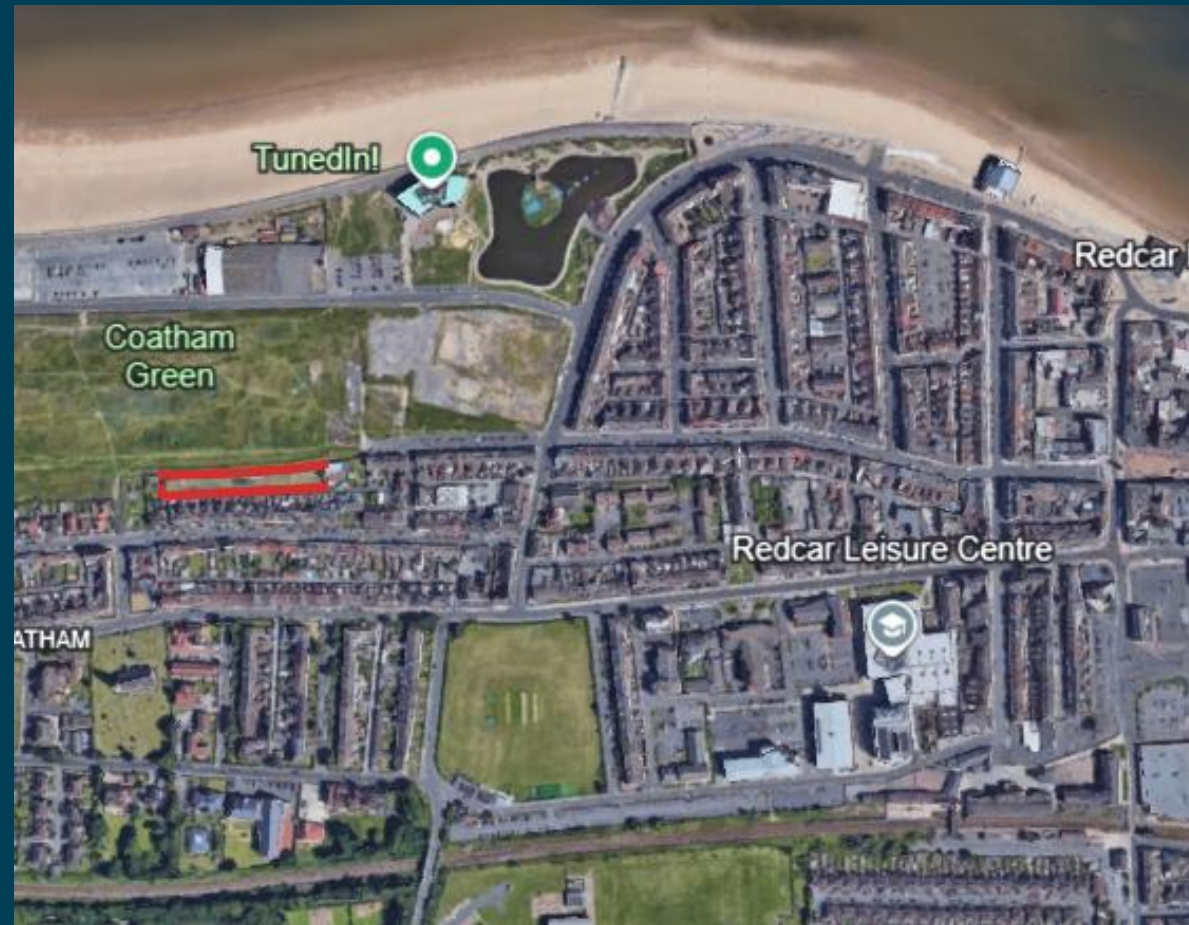


LAND AT QUEEN STREET, REDCAR, TS10 1BT
FOR SALE: POTENTIAL RESIDENTIAL DEVELOPMENT LAND



LAND AT QUEEN STREET, REDCAR, TS10 1BT

FOR SALE: POTENTIAL RESIDENTIAL DEVELOPMENT LAND



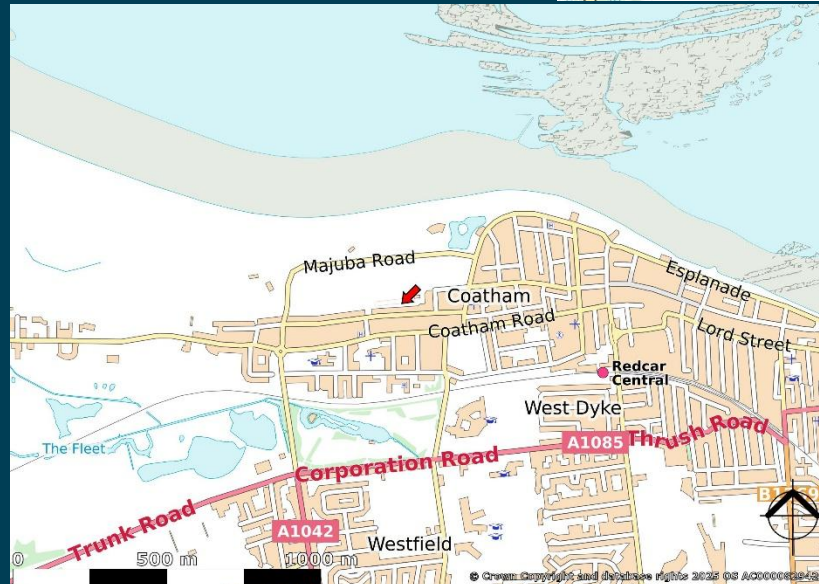
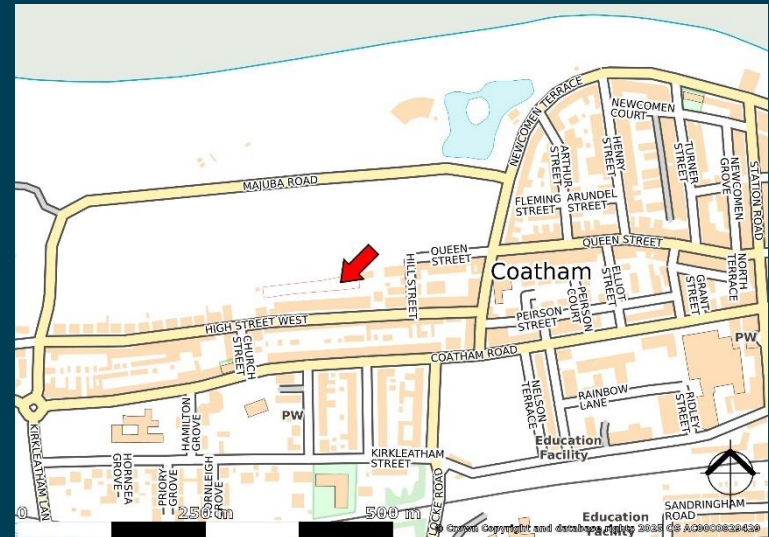
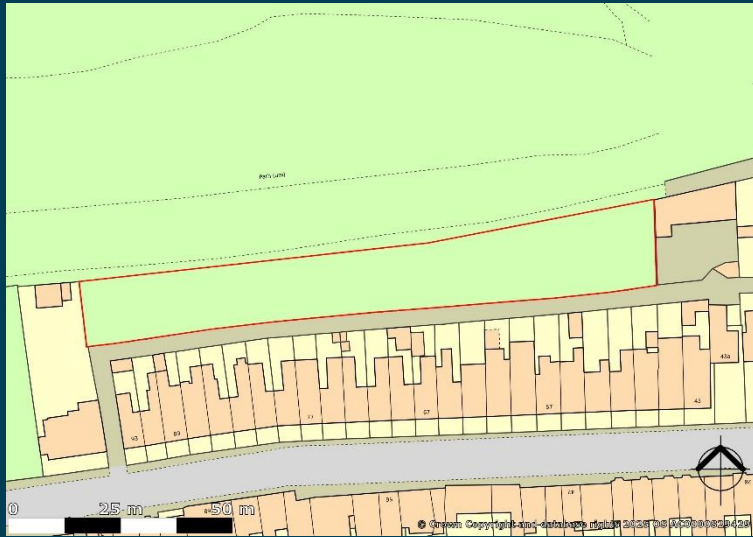
LAND AT QUEEN STREET, REDCAR, TS10 1BT

FOR SALE: POTENTIAL RESIDENTIAL DEVELOPMENT LAND



LAND AT QUEEN STREET, REDCAR, TS10 1BT

FOR SALE: POTENTIAL RESIDENTIAL DEVELOPMENT LAND



LAND AT QUEEN STREET, REDCAR, TS10 1BT

FOR SALE: POTENTIAL RESIDENTIAL DEVELOPMENT LAND

MISREPRESENTATION ACT 1967 Thomas Stevenson for themselves and for the vendors/lessors of any property for whom they act, give notice that:

- (i) These particulars are a general outline only, for the guidance of prospective purchasers or tenants, and do not constitute the whole or any part of an offer or contract;
- (ii) Thomas Stevenson cannot guarantee the accuracy of any description, dimensions, references to condition, necessary permissions for use and occupation and other details contained herein and prospective purchasers or tenants must not rely on them as statements of fact or representation and must satisfy themselves as to their accuracy;
- (iii) No employee of Thomas Stevenson has any authority to make or give any representation or warranty or enter into any contract whatsoever in relation to the authority.
- (iv) Prices/rents quoted in these particulars may be subject to VAT in addition; and
- (v) Thomas Stevenson will not be liable, in negligence or otherwise, for any loss arising from the use of these particulars.



Thomas : Stevenson can advise you in respect of:

Sales & Lettings

Acquisitions

Investment Property

Valuations

Property Management

Compulsory Purchase Compensation

Rent Reviews & Lease Renewals

THOMAS : STEVENSON

CHARTERED SURVEYORS : COMMERCIAL PROPERTY CONSULTANTS

Wellington House : Wellington Court : Preston Farm Business Park : Stockton-on-Tees : TS18 3TA

Tel: 01642 713303 : Fax: 01642 711177 : Email: admin@thomas-stevenson.co.uk

www.thomas-stevenson.co.uk