



2B Bishops Walk

Pinner, HA5 5QQ

Ground Floor Retail Unit

519 sq ft

(48.22 sq m)

- Parking Available
- ECP C Rating
- Prominent Retail Position
- Located Only 5 Minutes Away From Pinner Station

2B Bishops Walk, Pinner, HA5 5QQ

Summary

| | |
|-----------------------|------------------------------------|
| Available Size | 519 sq ft |
| Business Rates | Upon Enquiry |
| VAT | To be confirmed |
| Legal Fees | Each party to bear their own costs |
| EPC Rating | C |

Description

The premises comprise an A1 shop over ground and first floor totalling 519 sq. ft. The shop benefits from a return glazed shop front, an open plan retail layout accompanied by wood flooring and WC facilities.

- Total parking spaces: 1

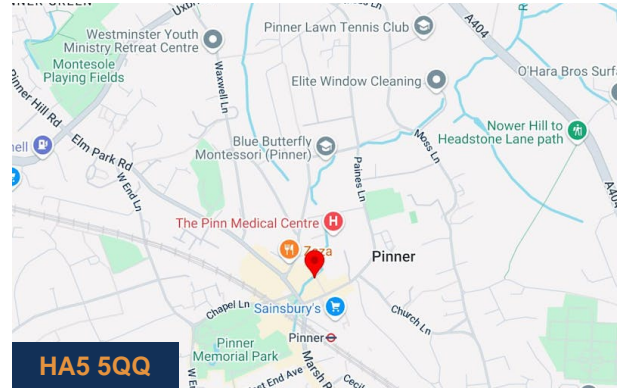
Location

Bishops Walk is a busy pedestrian walkway between the High Street and the main entrance to Marks and Spencer. The property is in close proximity to Metropolitan underground Station and other occupiers including Café Rouge, Zizzi, Sainsburys, WH Smith, Foxtons, Starbucks and numerous other local occupiers.

Accommodation

The accommodation comprises the following areas:

| Name | sq ft | sq m | Availability |
|--------------|------------|--------------|--------------|
| Ground | 519 | 48.22 | Available |
| Total | 519 | 48.22 | |



Viewing & Further Information



Finlay Milnes

020 8429 9009 | 07522 700 508

finlay@davidcharles.co.uk



George Moriarty

020 8429 9003 | 07522 700 507

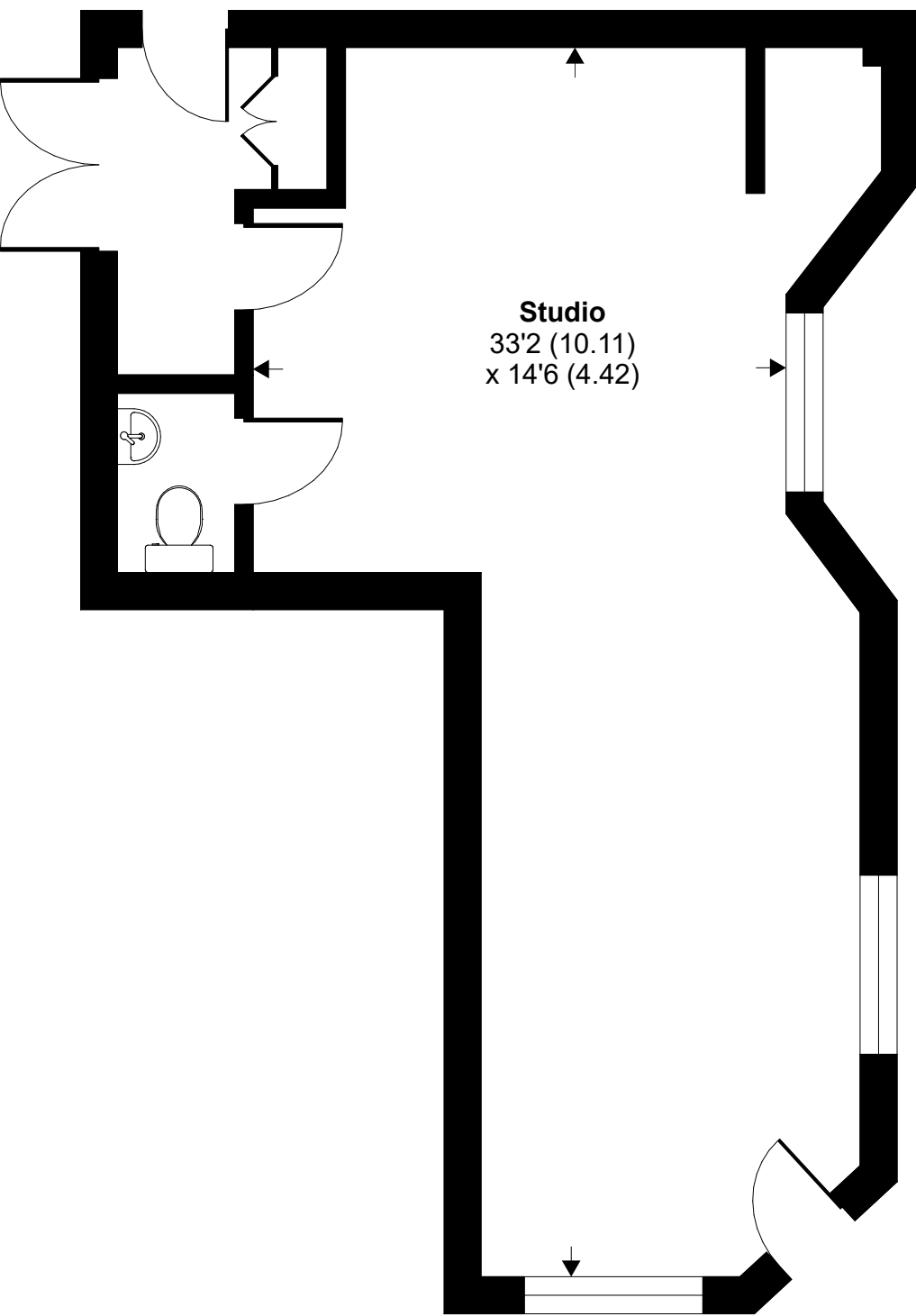
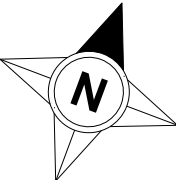
george@davidcharles.co.uk

The above information contained within this email is sent subject to contract. These particulars are for general information only and do not constitute any part of an offer or contract. All statements contained therein are made without responsibility on the part of the vendors or lessors and are not to be relied upon as statement or representation of fact. Intending purchasers or lessees must satisfy themselves, by inspection, or otherwise, as to the correctness of each of the statements of dimensions contained in these particulars. Generated on 09/07/2025

Bishops Walk, Pinner, HA5

Approximate Area = 459 sq ft / 42.6 sq m

For identification only - Not to scale



Studio
33'2 (10.11)
x 14'6 (4.42)

GROUND FLOOR