

4T

4 TENTERDEN STREET
HANOVER SQUARE

NEWLY FITTED CONTEMPORARY OFFICE SPACE
3,157 SQ FT AVAILABLE

WELCOME TO MAYFAIR

Nestled just off Hanover Square in the heart of Mayfair, 4 Tenterden Street offers an exceptional workspace in one of London's most prestigious locations. The third floor provides 3,157 sq ft of brand-new, fully fitted office space, designed for businesses seeking a balance of elegance, functionality, and connectivity.

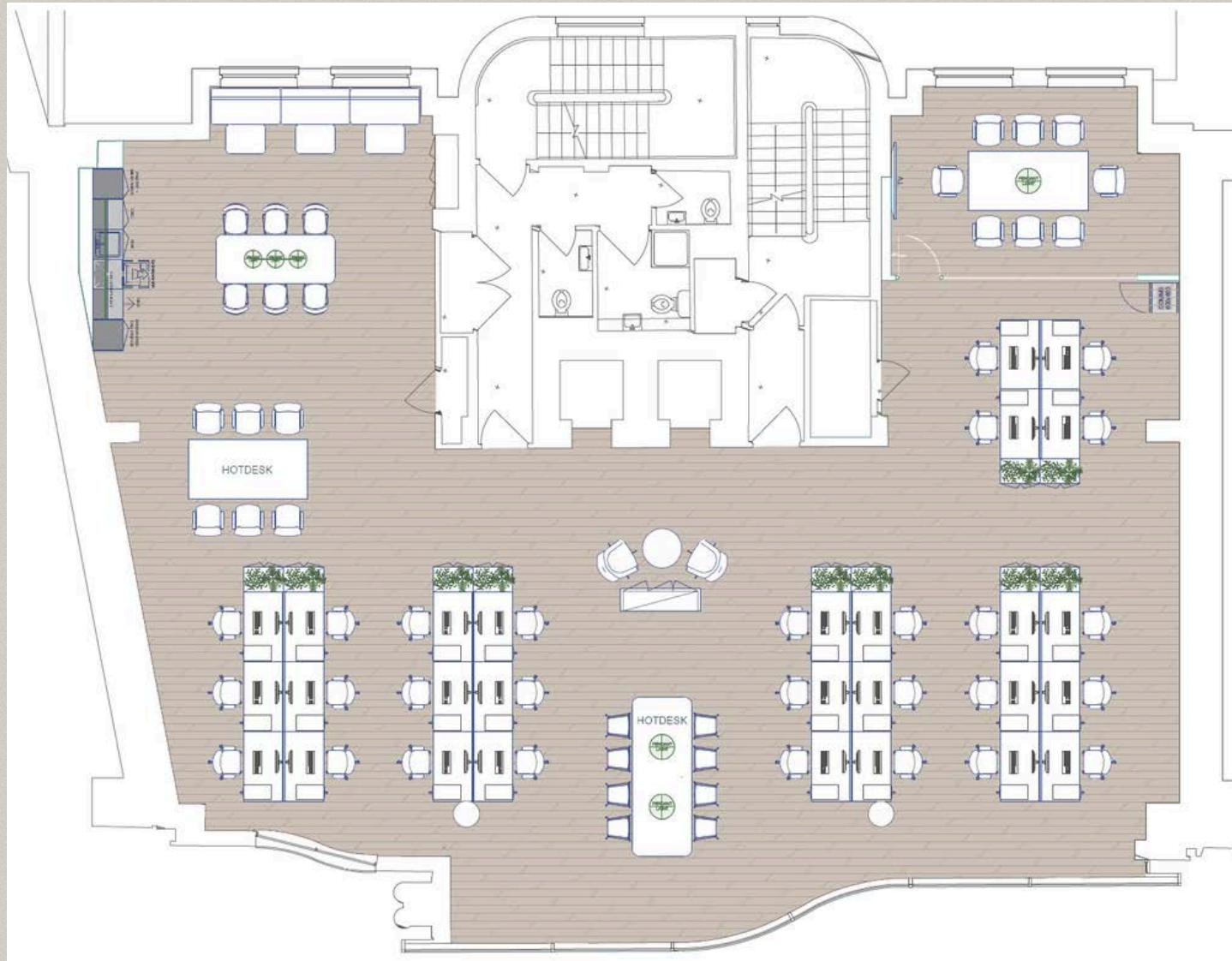


WORK READY

Step into a thoughtfully designed workspace with a stylish reception area, timber floors, and abundant greenery to foster a productive and inspiring environment.



The brand new fitout comprises 28 fixed desks workstations (with scope to reach 54 desks), a smart boardroom, space-efficient breakout and touchdown areas and fully equipped kitchen.

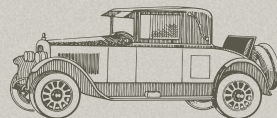


Area: 3,157 sq ft

BUILDING SPECIFICATION

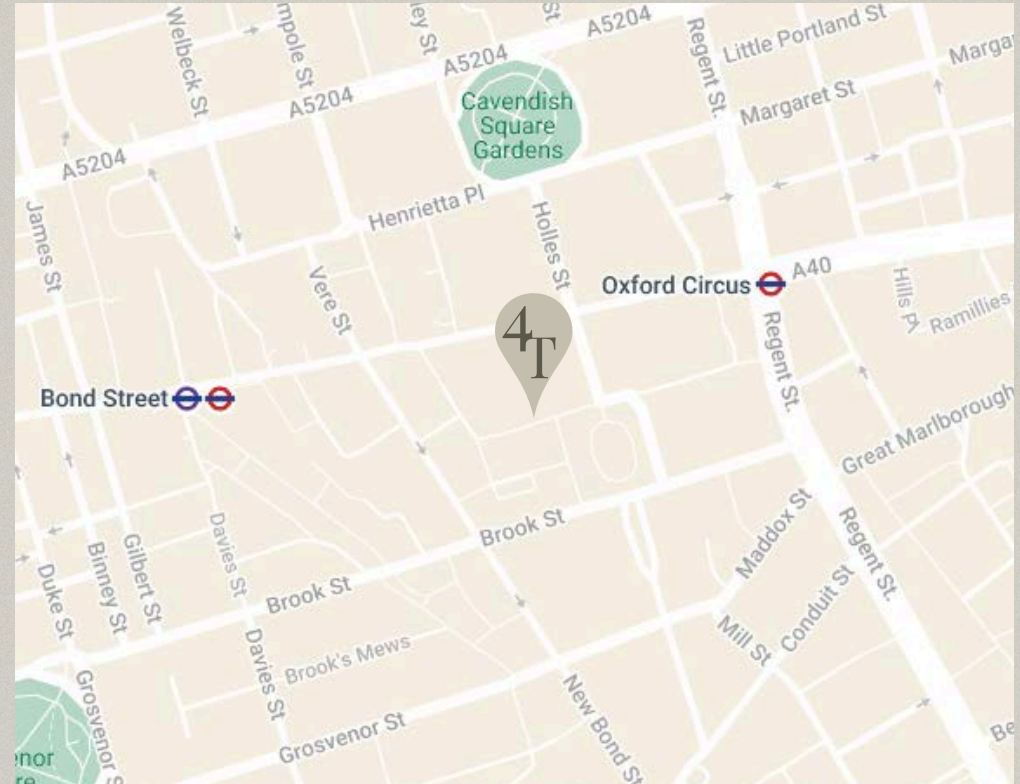
Designed for convenience, 4 Tenterden Street offers a comprehensive range of modern amenities, including:

- ✓ Security and ground floor commissionaire
- ✓ Secure bike storage for cyclists
- ✓ Fully fitted kitchenette
- ✓ Showers & changing facilities for active commuters
- ✓ Car parking availability
- ✓ Lift access to all floors
- ✓ High-speed internet & air conditioning
- ✓ Fully DDA compliant



CONNECTIVITY & TRANSPORT

4 Tenterden Street provides seamless routes across London. Numerous underground stations, bus routes and cycle-friendly infrastructure ensure that however your team commutes, convenience is guaranteed.



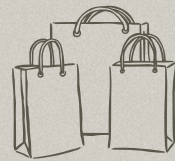
- Bond Street (Elizabeth & Central) 1 min
- Oxford Circus (Central, Bakerloo & Victoria)..... 4 mins
- Green Park (Jubilee, Piccadilly & Victoria) 14 mins



Heathrow Airport
31 mins



Hyde Park
15 mins



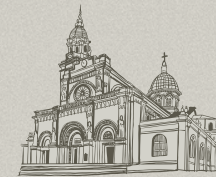
New Bond Street
1 min



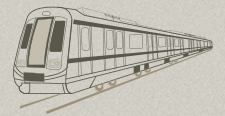
4 Tenterden St
Hanover Square



Covent Garden
18 mins



St Pauls
19 mins



Liverpool Street
19 mins

WHERE HISTORY AND MODERNITY MEET

Hanover Square, Mayfair's first public square, is steeped in history while being at the forefront of London's dynamic business scene.



Just moments away, the Bond Street Elizabeth Line entrance connects you effortlessly to the city, while the luxury of Bond Street, Oxford Street, and world-class dining and retail options are just steps from your door.

CONTACT

DAVID HUME

07973 248 756

David.Hume@nmrk.com

TOMAZ PHILLIPS

07767 847 345

Tomaz.Phillips@nmrk.com

CHARLOTTE PENRICE

07776 594 945

Charlotte.Penrice@nmrk.com

DULCIE HOPKINSON-WOOLLEY

07742 883 775

Dulcie.Hopkinson-Woolley@nmrk.com



MISREPRESENTATION ACT. THESE PARTICULARS ARE PREPARED FOR THE GUIDANCE ONLY OF THE PROSPECTIVE OWNERS, TENANTS AND OCCUPIERS. THEY ARE INTENDED TO GIVE A FAIR OVERALL DESCRIPTION OF THE PROPERTY BUT ARE NOT INTENDED TO CONSTITUTE PART OF AN OFFER OR CONTRACT. ANY INFORMATION CONTAINED HEREIN (WHETHER IN THE TEXT, PLANS OR PHOTOGRAPHS) IS GIVEN IN GOOD FAITH AND SHOULD NOT BE RELIED UPON AS BEING A STATEMENT OR REPRESENTATION OF FACT. MARCH 2025