

HIGH STREET RETAIL UNIT



68 High Street, Whitstable, Kent, CT5 1BB

30.2 sq m (325 sq ft) plus rear kitchen

TO LET

- ▶ Busy and popular trading position
- ▶ Good display frontage to the High Street
- ▶ Kitchen and separate WC



Location

The property is located in Whitstable, a popular seaside town on the north coast of Kent approximately 11 kms north of Canterbury and 45 kms north east of the county town of Maidstone.

It is situated in the heart of the town centre on the west side of the High Street virtually opposite its junctions with Gladstone Road and in a busy secondary shopping pitch that forms part of the town's main shopping area. Occupiers in the immediate vicinity comprise a mixture of mainly local independent traders and some national multiples such as Fat Face, Mountain Warehouse and Holland and Barrett.

Description

The property comprises an affordable lock-up retail unit with good display frontage to the High Street.

To the rear is a kitchen and separate WC.

The accommodation comprises the following approximate net internal areas:

Description	Sq M	Sq Ft
Retail Sales	30.19	325
Rear Kitchen	6.03	65

Tenure

The property is available to let on full repairing and insuring terms at an initial rent of £13,000 per annum exclusive of all other outgoings.

Rates

According to the Valuation Office Agency website the property's description is "shop and premises" and the current rateable value is £10,750, rising to £12,750 with effect from the 1st April 2026.

Planning

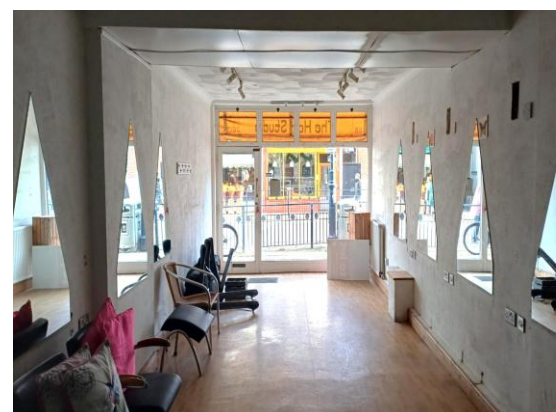
The prospective tenant should make their own enquiries with the local authority to establish whether or not their proposed use is acceptable.

Legal Costs

Each party is to be responsible for their own legal costs.

EPIC

To be assessed



Viewing

By appointment, please contact:

Vaughan Hughes
07791 666629
01227 788088
vhughes@caxtons.com

