

EDWARD CHARLES
& PARTNERS W 1
CHARTERED SURVEYORS

55 Baker Street

Marylebone, London, W1U 8EW

Part 2nd floor (Cat A) 15,014 sq ft Part Ground floor (fitted) 2,396 sq ft



Key Points

- Air conditioning
- Excellent natural light
- Commissionaire
- Contemporary reception
- Full access raised floor
- Bike parking
- Car Parking
- Showers
- New key point...





Availability

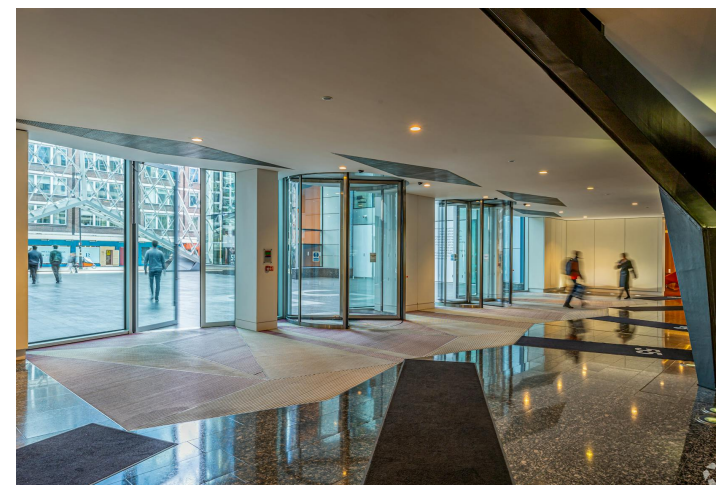
Name	sq ft	sq m	Tenure	Availability
2nd - Part floor South	15,014	1,394.85	To Let	Available
2nd - Suite A	4,575	425.03	To Let	Available
2nd - Suite B	5,317	493.97	To Let	Available
2nd - Suite C	4,628	429.96	To Let	Available
Ground - Grounf flr North: Fitted	6,646	617.43	To Let	Available
Total	36,180	3,361.24		

Description

Part 2nd floor (Cat A) 15,014 sq ft
Part Ground floor (fitted) 2,396 sq ft
Available on a fixed term until June 24th 2028, after which rolling lease available with mutual breaks

Tenure

Leasehold



Further Information

Location

Located halfway up the western side of Baker Street. This prominent headquarters office building offering high specified office, retail and residential accommodation. Baker Street Station (Jubilee, Bakerloo, Hammersmith & City, Metropolitan and Circle lines) is located 500m to the north and offering fantastic connections across Central London.

Links

[Website →](#)
[Floor Plans →](#)

Contact

Sean Cunningham
07827 985858

Jamie Shuttle
07788 414332

scunningham@edwardcharles.co.uk
jamieshuttle@edwardcharles.co.uk

Guy Milne (Hanover Green)

Nick Raven (Hanover Green)

edwardcharles.co.uk

