

EXPECT THE UNEXPECTED



3 ST HELEN'S PLACE
LONDON EC3



3 ST HELEN'S PLACE
LONDON EC3





3 ST HELEN'S PLACE
LONDON EC3

EXCLUSIVE CITY OFFICES, CLOSE TO CROSSRAIL...

...READY FOR NOVEMBER 2022

Remodelled by Buckley Gray Yeoman, on behalf of the Leathersellers' Company, 3 St Helen's Place will offer contemporary City offices over 9 floors.

From the refreshed façade to the impressive arrival experience, quality and attention to detail have been paramount. Tenant wellbeing and sustainability have been central to every aspect of the design.



Premium end-of-commute facilities
and cycle storage



An exclusive, private City street



Excellent transport and comms
connectivity...in equal measure



3 ST HELEN'S PLACE
LONDON EC3





3 ST HELEN'S PLACE
LONDON EC3



Typical floor with representative furniture CGI



Typical WC CGI

**QUALITY &
ATTENTION
TO DETAIL
HAVE BEEN
PARAMOUNT**

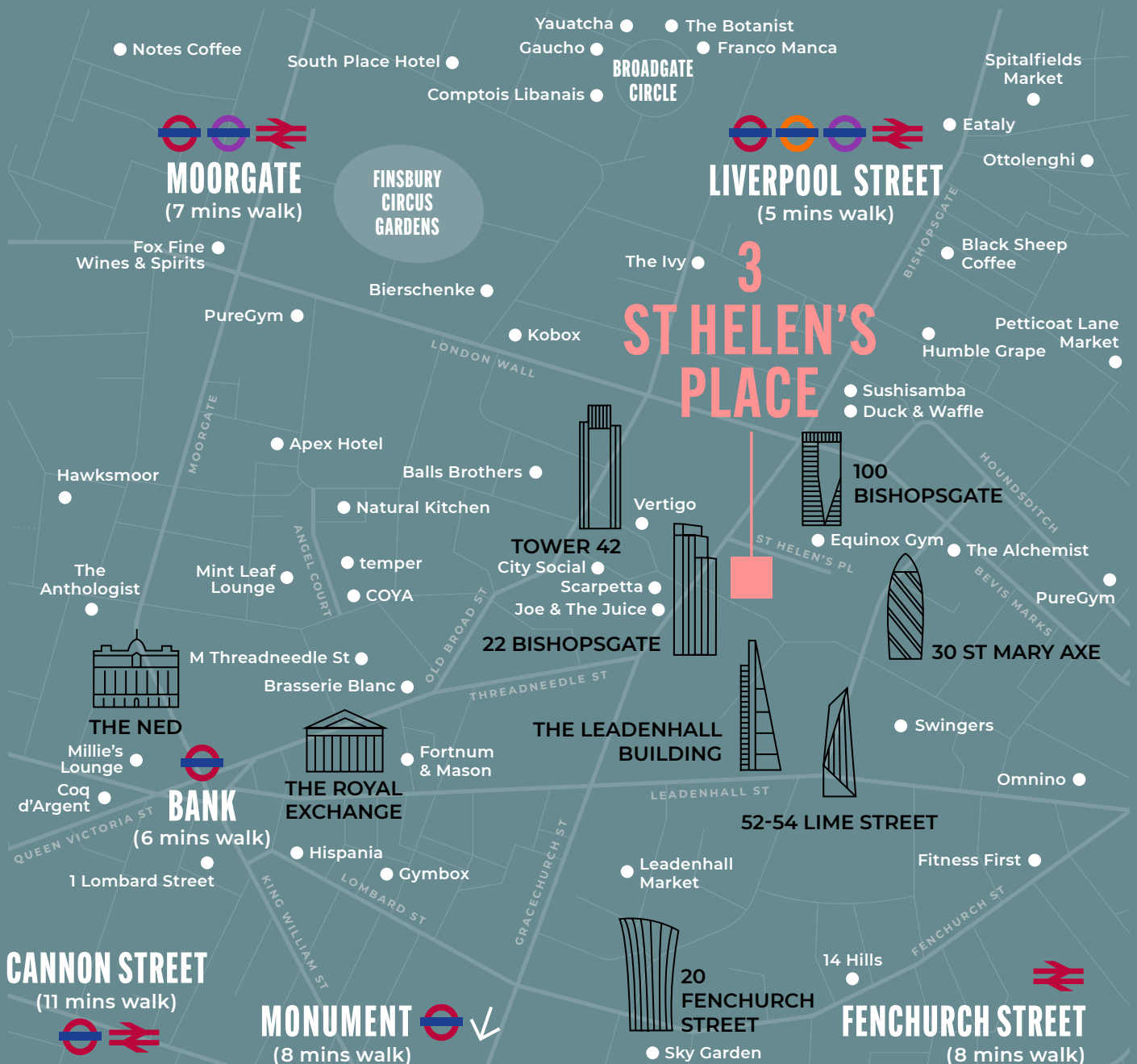


3 ST HELEN'S PLACE
LONDON EC3

AN ENVIABLE LOCAL LIFESTYLE

The City of London is an international business hub and has local amenities to match. From cafés and street markets to Michelin starred restaurants, from cocktail bars and pubs to gyms, 3 St Helen's Place has access to it all.

Transport connectivity is excellent with the Crossrail / Elizabeth Line at Liverpool Street a 5 minutes walk away. Numerous underground and mainline stations are on the doorstep. Bank, Moorgate and Cannon Street are a short walk away, with bus and cycle routes passing along Bishopsgate.





3 ST HELEN'S PLACE
LONDON EC3



The Royal Exchange



Spitalfields



Bishopsgate



Bow Lane



Leadenhall Market



Liverpool Street



Bank



3 ST HELEN'S PLACE
LONDON EC3

HIGHLIGHTS



Central to the City of London's high-rise cluster



Exclusive historic street



Prestigious arrival experience with double height reception



2 new passenger lifts and 1 cycle lift



Fibre optic comms enabled



Exposed structural columns



Air-conditioning & raised floors



High-end shower & changing facilities



Bicycle racks, charging points and lockers



6th floor south facing roof terrace



BREEAM 'Excellent'



Opening windows allow tenants to control their environment and energy consumption

AVAILABILITY

FLOOR (NIA)	USAGE	SQ FT	SQ M
Sixth (ex terrace)	Office	2,835	263
Fifth	Office	3,366	313
Fourth	Office	3,742	348
Third	Office	3,728	346
Second	Office	3,699	344
First	Office	3,706	344
Mezzanine (West)	Office	1,668	155
Mezzanine (East)	Office	1,119	104
Ground (West)	Office	1,668	155
Ground (East)	Office	1,119	104
Lower Ground	Office	3,626	337
Basement	End of Commute facilities	—	—
TOTAL	—	30,276	2,813

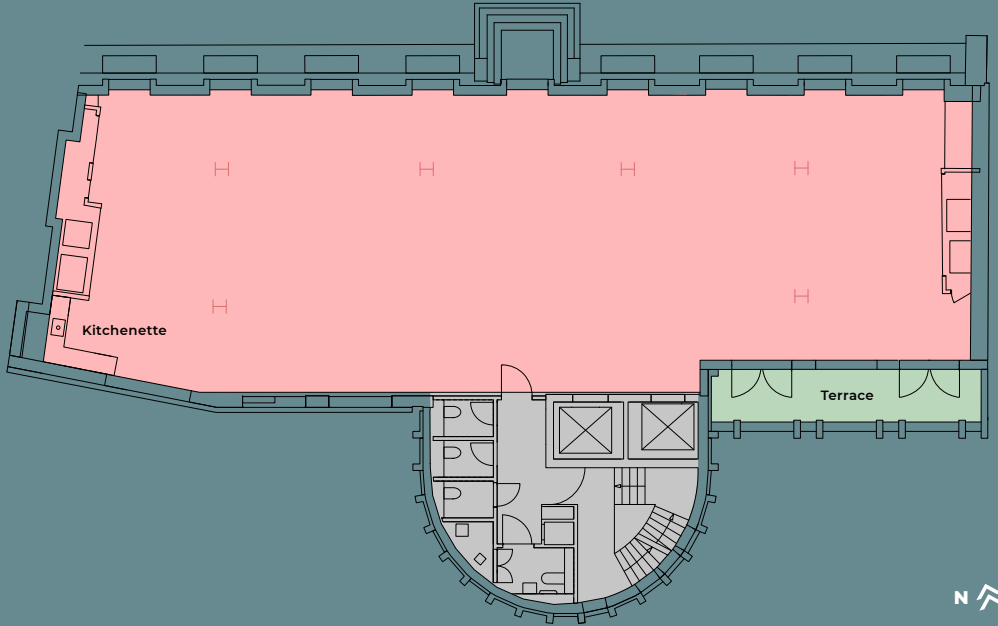


3 ST HELEN'S PLACE
LONDON EC3

SIXTH FLOOR

2,835 SQ FT / 263 SQ M

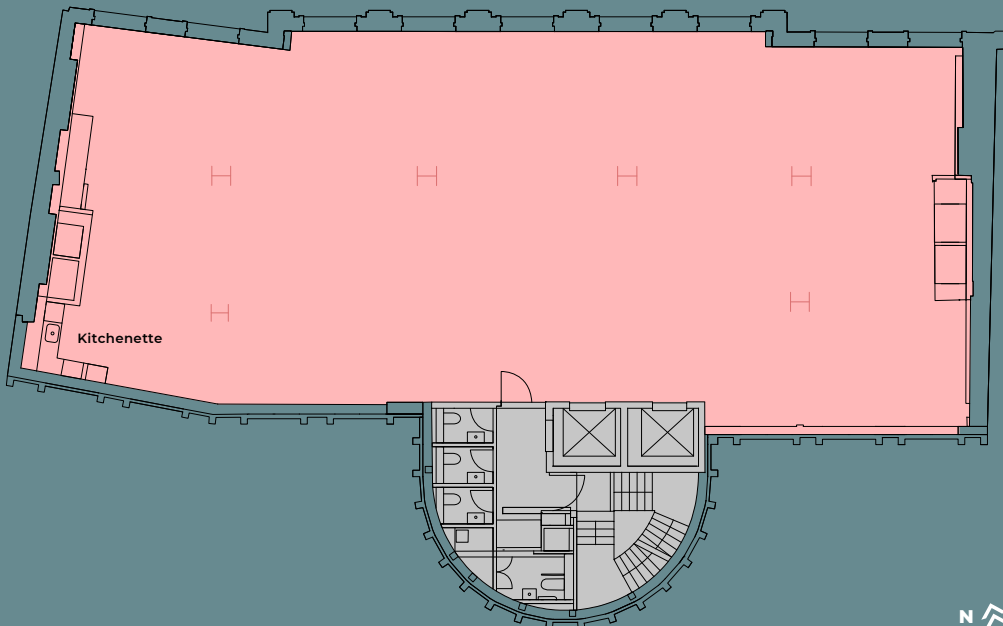
ST HELEN'S PLACE



THIRD FLOOR

3,728 SQ FT / 346 SQ M

ST HELEN'S PLACE





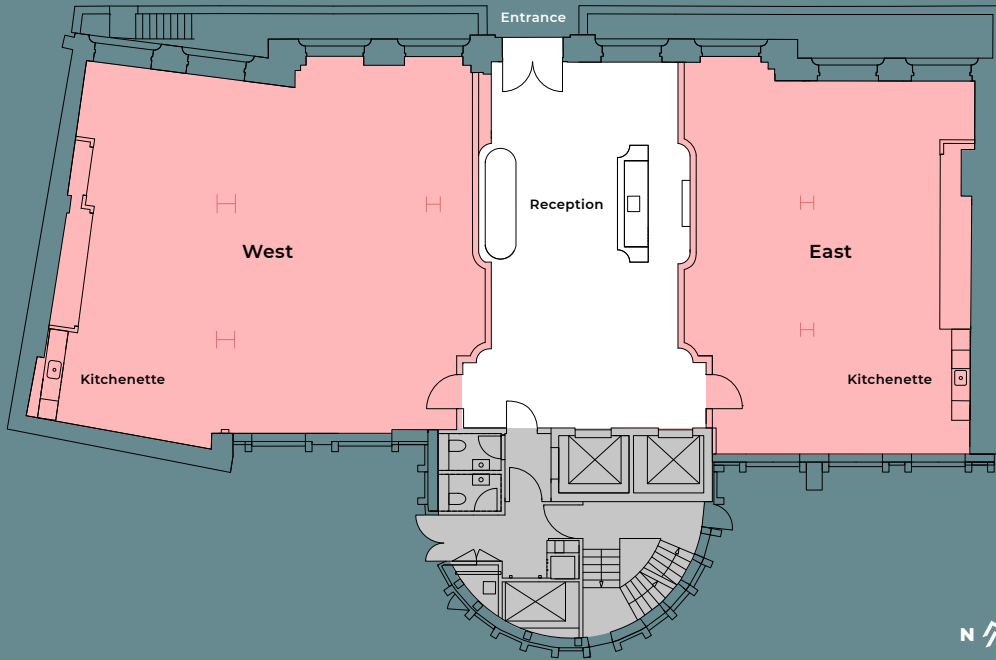
3 ST HELEN'S PLACE
LONDON EC3

GROUND FLOOR

West: 1,668 SQ FT / 155 SQ M

East: 1,119 SQ FT / 104 SQ M

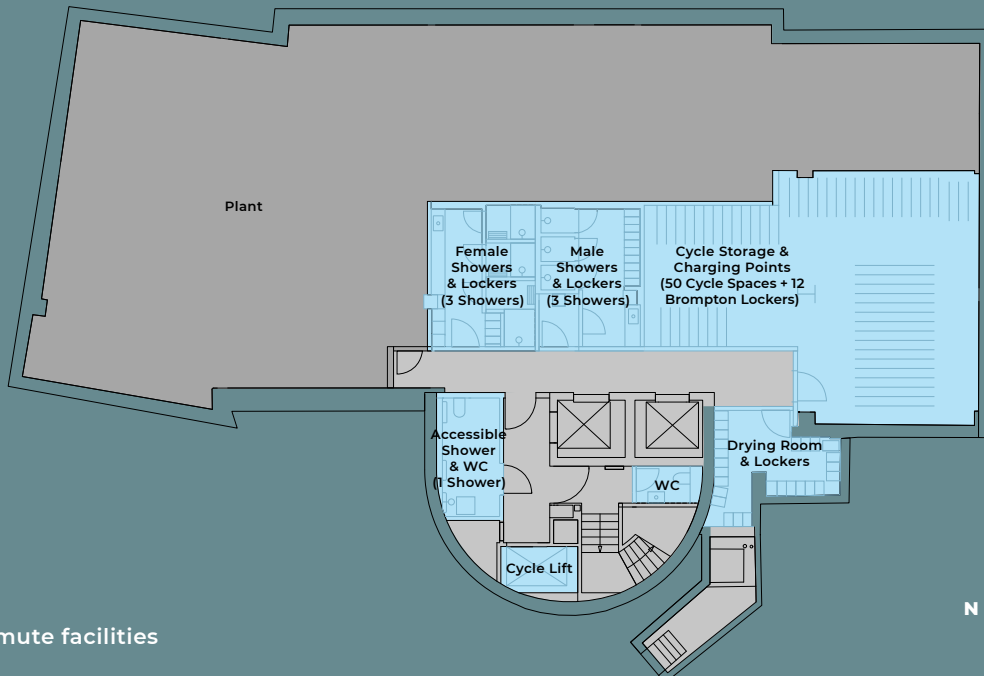
ST HELEN'S PLACE



BASEMENT FLOOR

End of Commute Facilities

ST HELEN'S PLACE

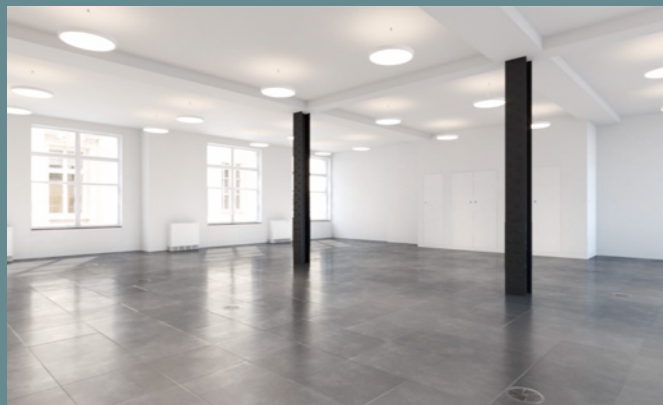
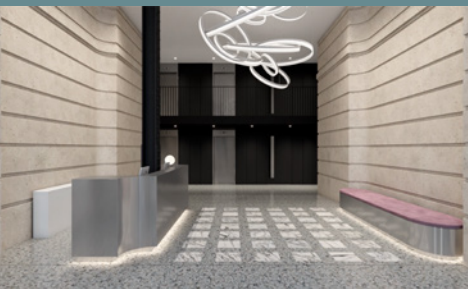


■ End of commute facilities



3 ST HELEN'S PLACE
LONDON EC3

TO FIND OUT MORE...



▶ PLAY THE FILM ▶

📍 VISIT THE WEBSITE 📍



**3 ST HELEN'S PLACE
LONDON EC3**

READY FOR NOVEMBER 2022

www.3sthelensplace.com



THE LEATHERSELLERS' COMPANY

A development by the Leathersellers' Company
designed by architect Buckley Gray Yeoman

Please contact the sole letting agents, Ingleby Trice:



MALCOLM TRICE

07860 305 024

m.trice@inglebytrice.co.uk

VERONIKA SILLITOE

07966 029 048

v.sillitoe@inglebytrice.co.uk

FRANCIS CUNDELL

07939 598 545

f.cundell@inglebytrice.co.uk

Subject to Contract. The agencies for themselves and the vendor of this property give notice that these particulars do not form, or form part of, any offer or contract. They are intended to give fair description of the property and whilst every effort has been made to ensure their accuracy this cannot be guaranteed. Any intending purchaser must therefore satisfy themselves by inspection or otherwise. Neither the agent, nor any of its employees, has any authority to make or give any further representations or warranty whatsoever in relation to this property. All prices and rents quoted are net of VAT. July 2022.

Design and production: www.stuartchapmandesign.co.uk 020 3983 1665