

MEETING ROOMS,
GYM & CAFÉ
EXCLUSIVELY
FOR TENANTS

ATRIUM

UXBRIDGE UB8 1HB

THE WORKPLACE
DESTINATION

WORK AT

ATRIUM

Conventional, fitted and serviced office space solutions, from a single desk to an HQ

MEET AT

ATRIUM

Exclusive use of bookable meeting rooms with conference facilities and communal workspace

WELLNESS AT

ATRIUM

Good things happen with a complimentary fitness centre, onsite cafe and areas for co-working or relaxing

ATRIUM

[WORK](#)

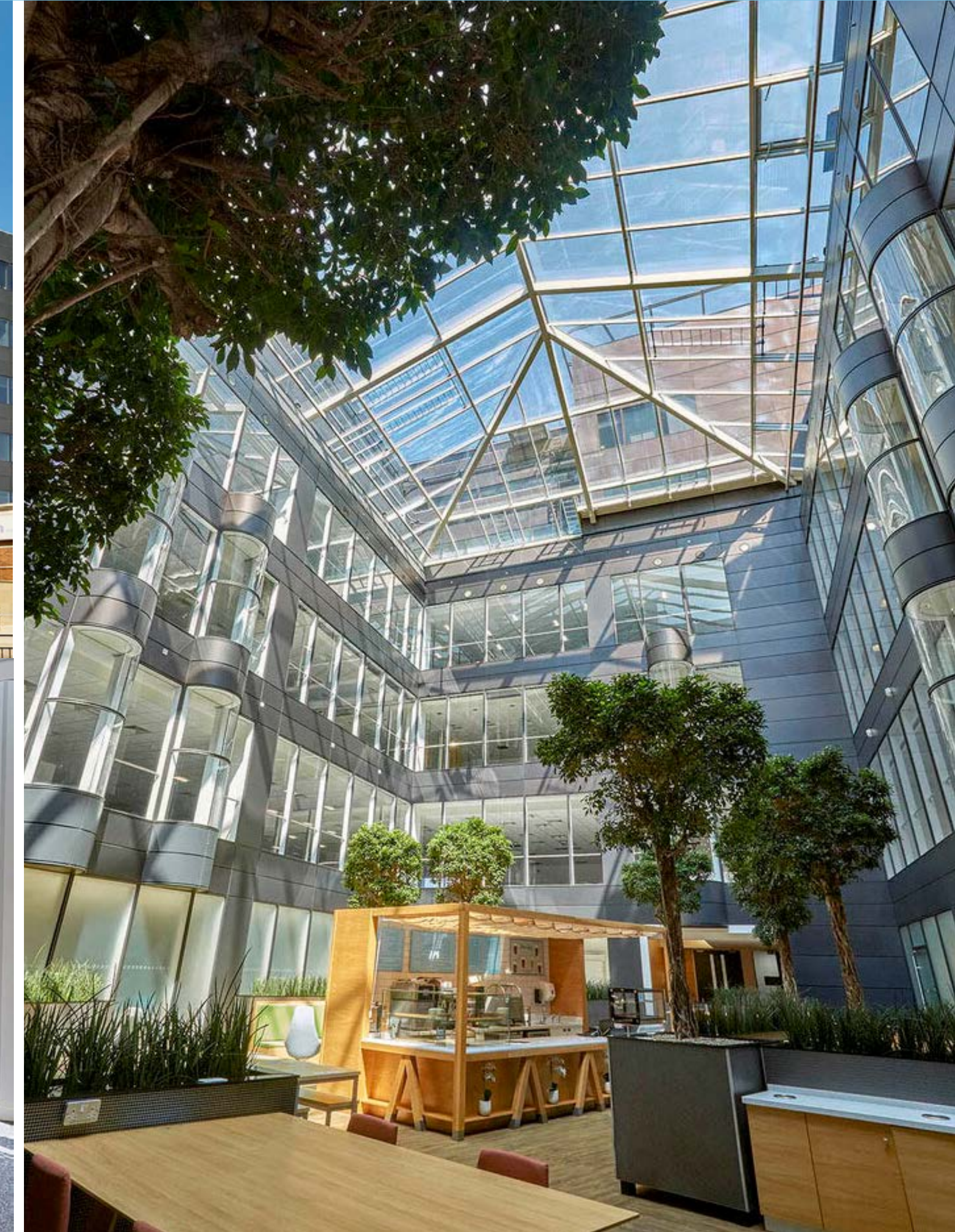
[MEET](#)

[WELLNESS](#)

[ABOUT](#) / [ACCOMMODATION SCHEDULE](#) / [FIRST THIRD](#) / [CAT A FITTED](#) / [SPECIFICATION](#)

Find your new home with flexible office space in the heart of Uxbridge.

We've updated our landmark building to offer you the very best Grade A workspace to include fully fitted and furnished suites, conventional open plan offices and serviced workspace.



MORE THAN
WORKSPACE.

Fitted and furnished suites.

Whether you're looking for space for 15 or 50, our fully fitted suites are ideal for small businesses with big ideas. We've thought of everything – quality finishes, meeting rooms, tea point, ergonomic furniture, superfast WiFi – so all you have to do is show up and get to work. Studios range from 2,090 to 5,100 sq ft, and if you want to make your mark on the space, you can take care of the fit-out yourself.



ATRIUM IS FOR
EVERYONE.

ATRIUM

WORK

MEET

WELLNESS

[ABOUT](#) / [ACCOMMODATION SCHEDULE](#) / [FIRST THIRD](#) / [CAT A FITTED](#) / [SPECIFICATION](#)

Open plan workspace.

From fitted and furnished suites to whole floors of 24,000 sq ft, Atrium offers light filled, Grade A open plan space finished to a high specification.



WHERE GOOD THINGS HAPPEN.

ATRIUM

WORK

MEET

WELLNESS

ABOUT / ACCOMMODATION SCHEDULE / FIRST THIRD / CAT A FITTED / SPECIFICATION

No matter what size of space you are looking for, we have it; from a single desk to a whole floor.

FLEXIBLE WORKING FROM 1-15 DESKS	5	SERVICED WORK AND MEETING SPACE BY CITIBASE
FLEXIBLE WORKING FROM 1-15 DESKS	4	SERVICED WORK AND MEETING SPACE BY CITIBASE
AVAILABLE NOW	3	CAT A OR FITTED 1,900 - 24,760 SQ FT
COMING SOON	2	CAT A OR FITTED 24,000 SQ FT
AVAILABLE NOW	1	CAT A OR FITTED 2,090 - 5,100 SQ FT
COMING SOON	G	CAT A OR FITTED 4,530 SQ FT



Citibase provides two floors of refurbished serviced office suites in various configurations, available on flexible terms

[Learn more](#)

ATRIUM

WORK

MEET

WELLNESS

[ABOUT](#) / [ACCOMMODATION SCHEDULE](#) / [FIRST](#) [THIRD](#) / [CAT A](#) [FITTED](#) / [SPECIFICATION](#)

FIRST FLOOR

2,090 – 5,100 SQ FT

FULLY FITTED & FURNISHED

SUITE 1	2,600 SQ FT	7 parking spaces
SUITE 2	LET	
SUITE 3	4,330 SQ FT	12 parking spaces
SUITE 4	2,090 SQ FT	6 parking spaces
SUITE 5	LET	
SUITE 6	5,100 SQ FT	14 parking spaces

- Fully fitted and furnished suites
- Open plan desks & meeting rooms
- WiFi enabled
- Short form lease in place
- All inclusive financial packages available

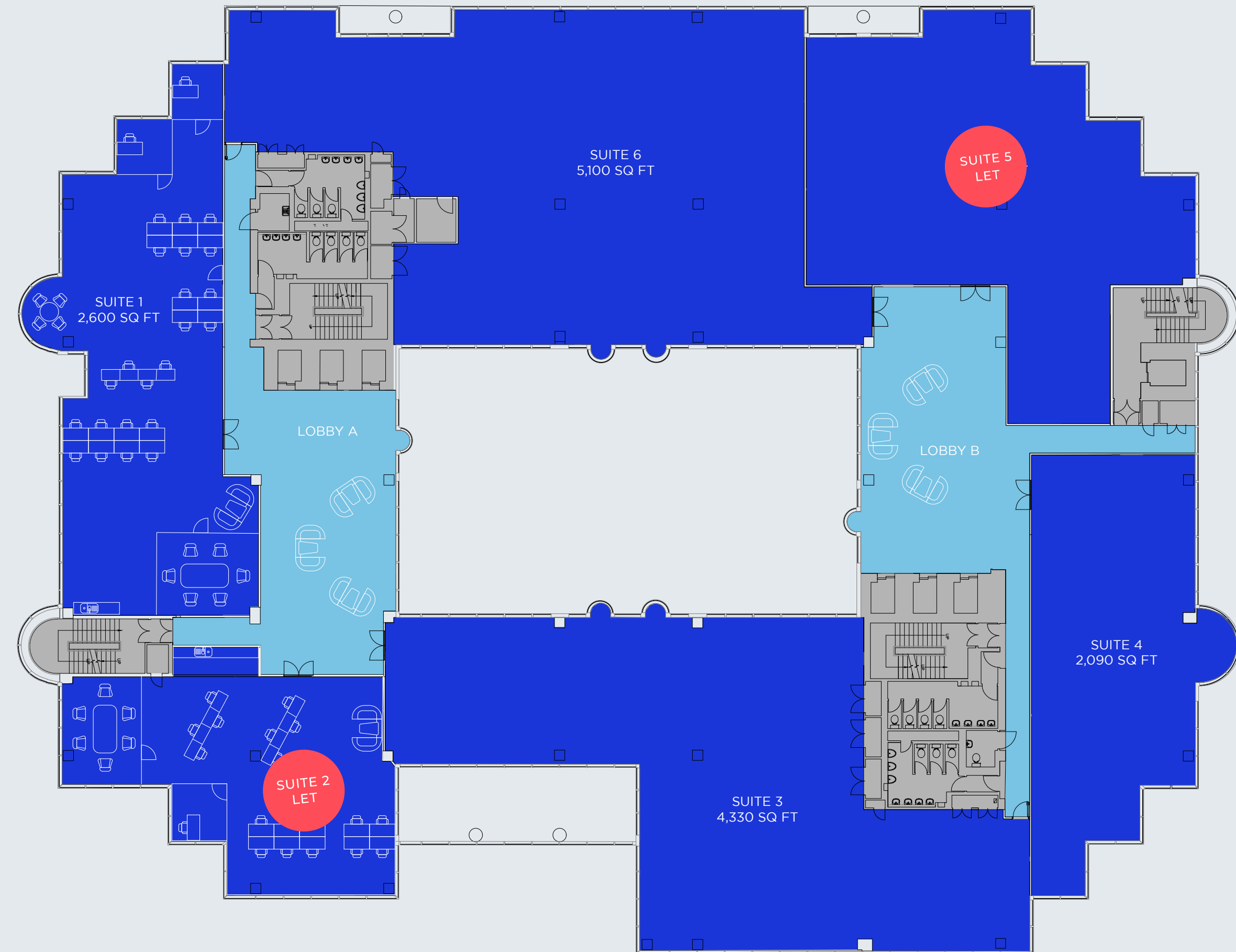
AVAILABLE NOW

KEY

Office

Core

Lobby



HAREFIELD ROAD

ATRIUM

[WORK](#)

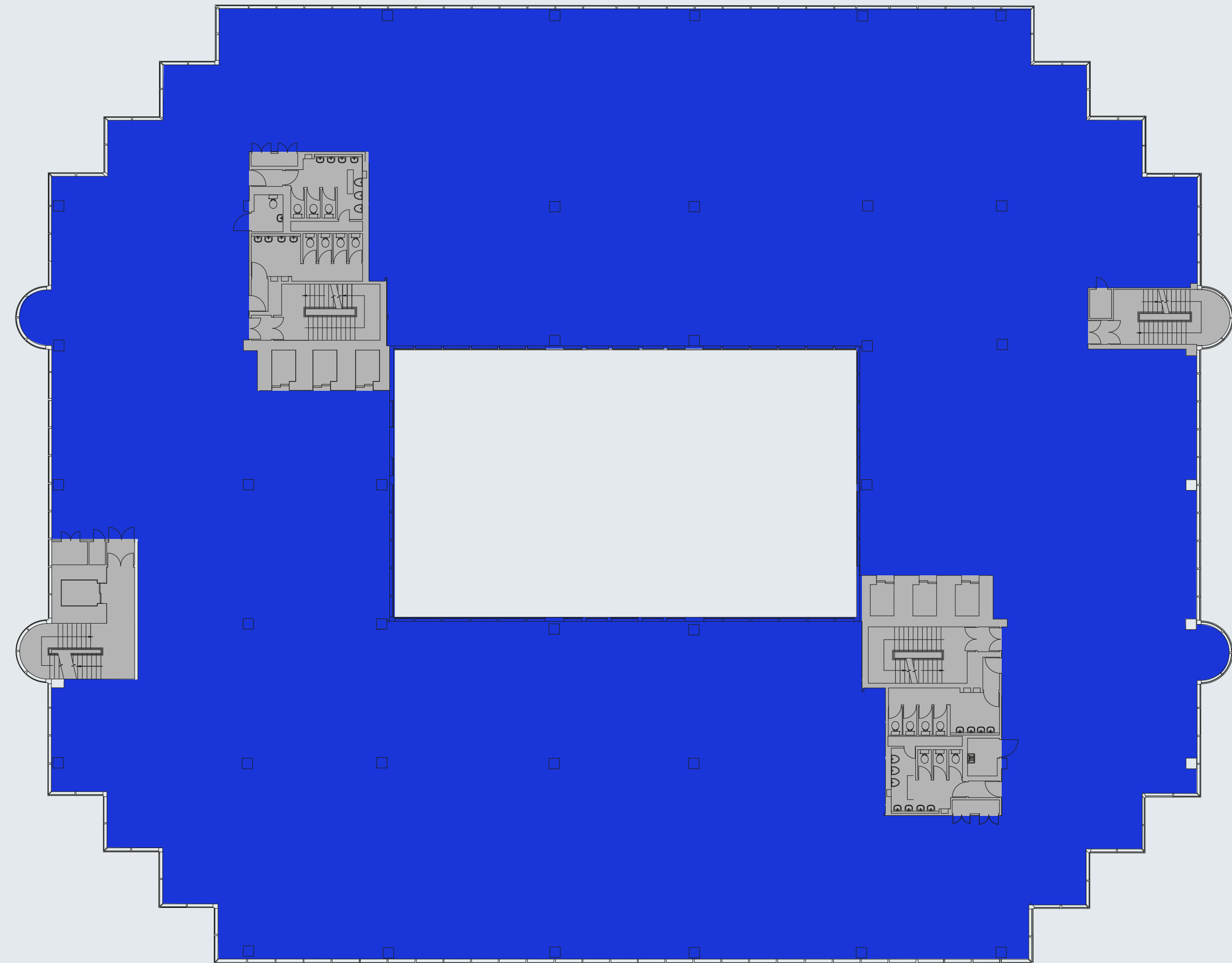
[MEET](#)

[WELLNESS](#)

[ABOUT](#) / [ACCOMMODATION SCHEDULE](#) / [FIRST](#) [THIRD](#) / [SPECIFICATION](#)

THIRD FLOOR
24,760 SQ FT

AVAILABLE NOW



HAREFIELD ROAD

ATRIUM

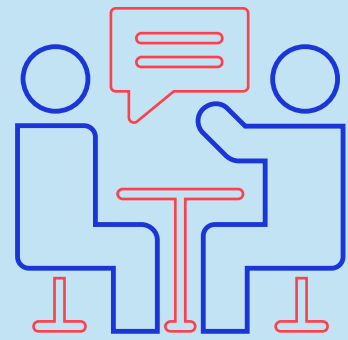
WORK

MEET

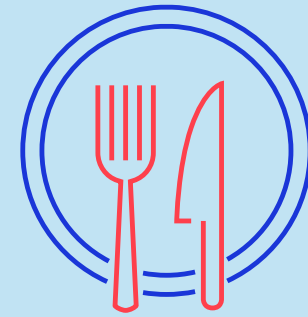
WELLNESS

[ABOUT](#) / [ACCOMMODATION SCHEDULE](#) / [FIRST](#) [THIRD](#) / [CAT A](#) [FITTED](#) / [SPECIFICATION](#)

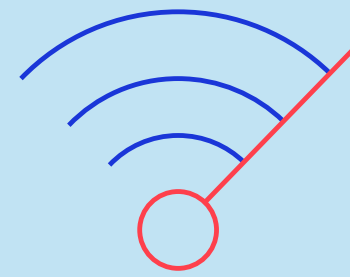
Complimentary amenities at Atrium.



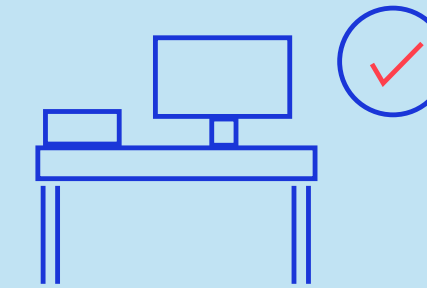
Bookable meeting rooms



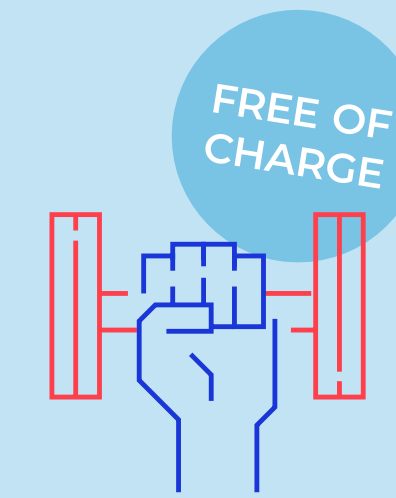
Atrium with on-site café and breakout areas



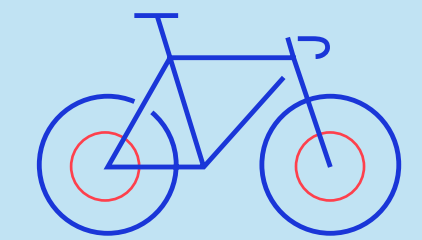
High speed internet connection



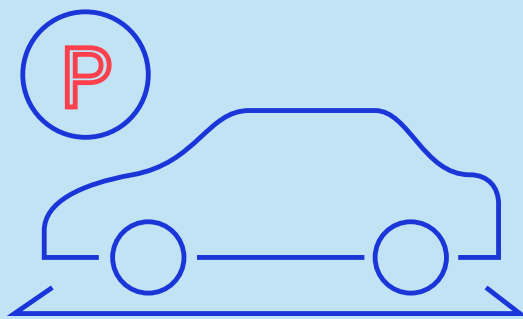
Fully fitted / furnished, plug & play suites



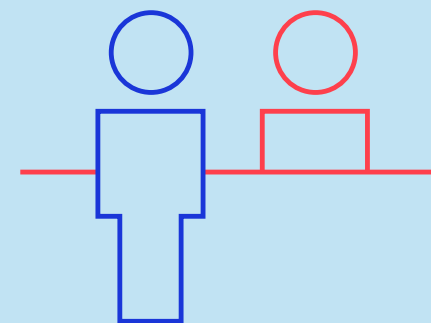
Fitness centre, changing rooms and showers



Secure cycle storage on site



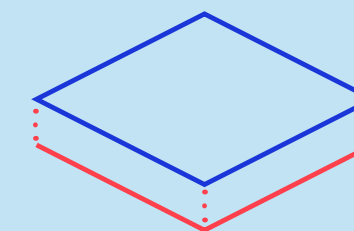
Secure underground parking
1:366 sq ft



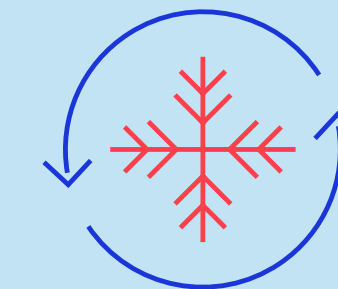
Manned reception and 24/7 security



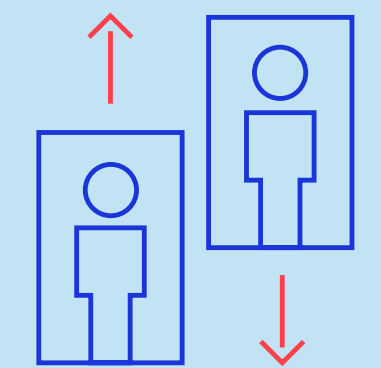
5 minute walk to Uxbridge Town Centre



Fully accessible raised floors



Air-conditioning



6 passenger lifts

ATRIUM

WORK

Communal work and meeting spaces.

If you're trying to impress, need more room or are looking for a change of scene, our communal workspace and bookable meeting rooms are here for you.

Break out

Our light-filled atrium is a communal lounge and workspace where you, your team and your clients can come together to catch up. With comfortable furniture and free WiFi throughout, it's easy to work at Atrium.

Come together

Looking for somewhere for that important meeting, workshop or event? Our beautifully designed meeting rooms are the place for you. Spacious, flexible and with all the presentation facilities you could need, it's easy to book and waiting for you.

10 exclusive meeting rooms for the use of Atrium's tenants

- 1x 20 person
- 1x 16 person
- 1x 12 person
- 1x 10 person
- 6x 4-6 person

MEET



WELLNESS



ATRIUM

WORK

MEET

WELLNESS

AMENITIES LOCATION CONNECTIONS

Make the most of every day, with Atrium's cafe and fitness centres.

Looking for more than just workspace? Welcome to complimentary exercise classes and our break-out hub and cafe.

The hub

Our cafe with communal space not only offers great food but it's also an excellent spot for informal client meetings, one-to-ones and brainstorming. Plus, there's complimentary WiFi throughout.

The gym

Our fitness studios have a range of classes to suit everyone. Release the pressure with an afternoon dance class or relax with some lunchtime yoga. If lifting is more your thing, there's a gym right next door. And if you like to ride to work, don't sweat – we've got showers, changing rooms and secure bike storage on site.



ATRIUM

WORK

MEET

WELLNESS

AMENITIES LOCATION CONNECTIONS

West is best

Uxbridge is home to some of the biggest players and brightest businesses in the UK. Add to that talent from the nearby Brunel University, and you've got a town bursting with ambition.

Coffee spots, pubs, pizza parlours and burger joints – all the usual favourites and some excellent independents are just minutes away.

For retail therapy or to find the last-minute gift, The Pavilions and The Chimes shopping centres are your best bet with all the high street shops plus boutiques selling luxury designer brands.

If you're looking for some peace and quiet, head to beautiful Fasnidge Park for a wander or lace up those trainers and hit the paths along the Grand Union Canal and Fray's River. And if you'd like to get closer to the water, try the Lido on those sunnier afternoons.

Local amenities:



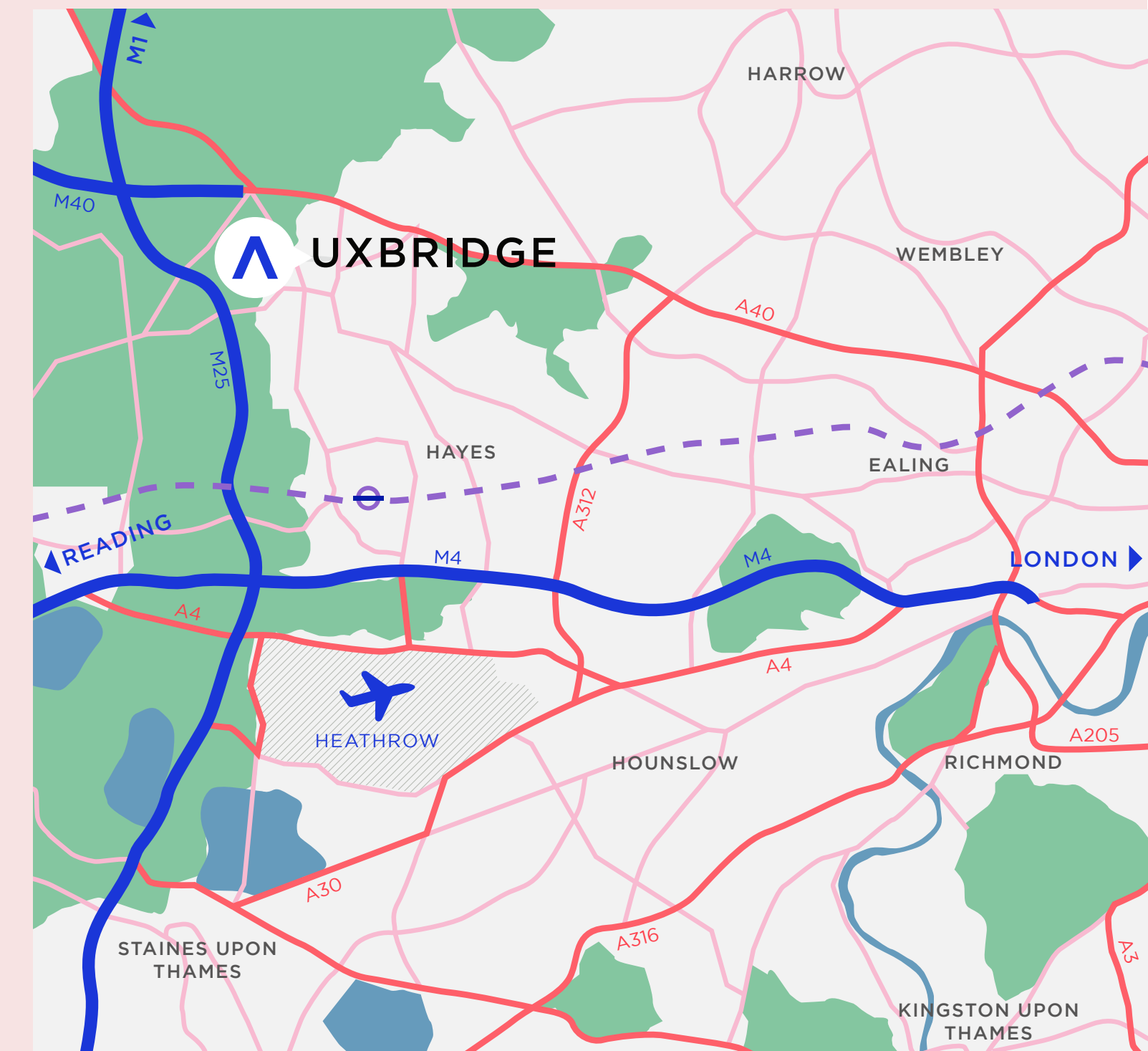
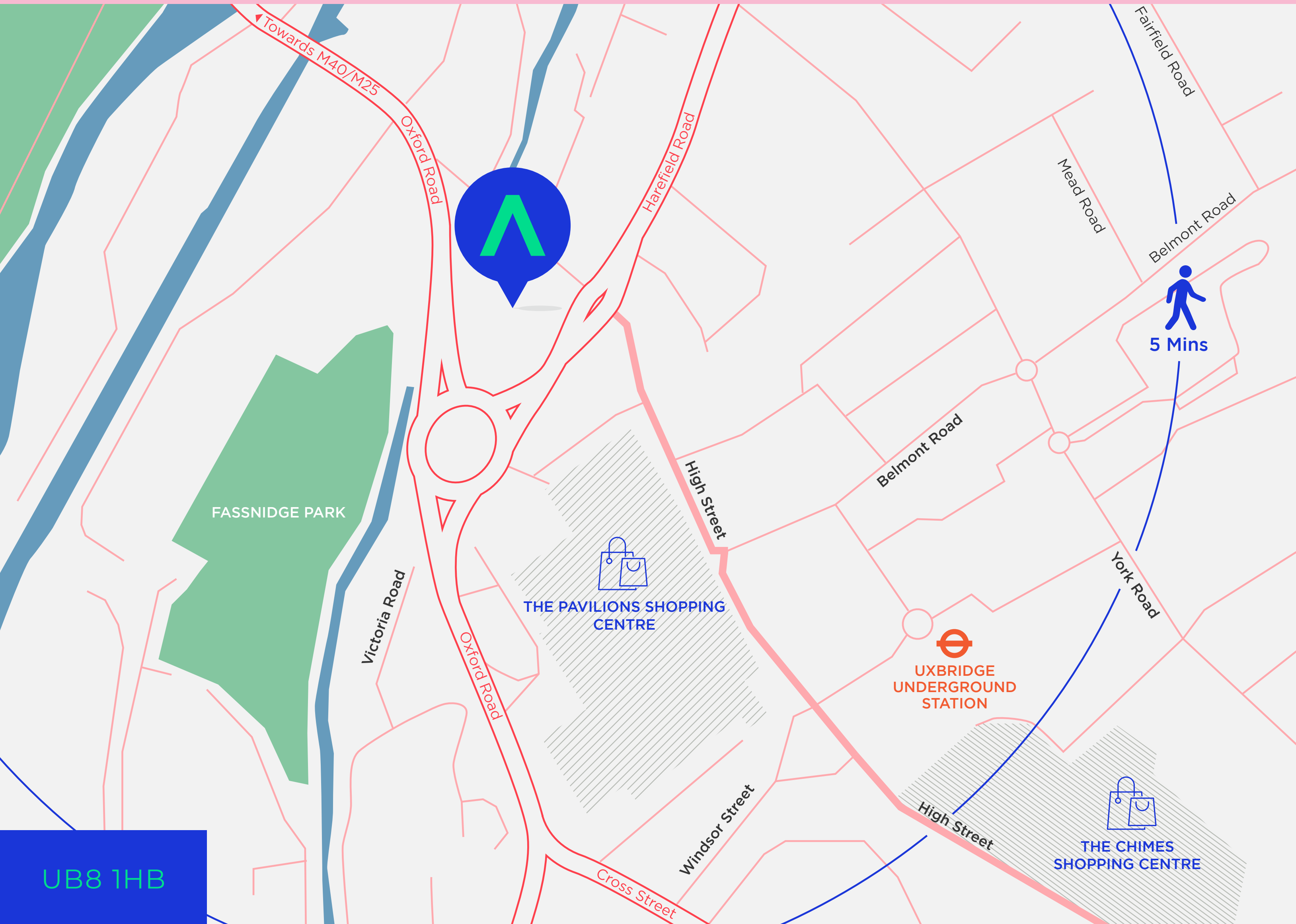
ATRIUM

WORK

MEET

WELLNESS

AMENITIES LOCATION CONNECTIONS



-  5 mins M40/M25 Junction
-  13 mins Heathrow
-  5 mins Underground
-  38 mins Zone 1

Source: Google.com and TFL

UB8 1HB

ATRIUM

WORK

MEET

WELLNESS

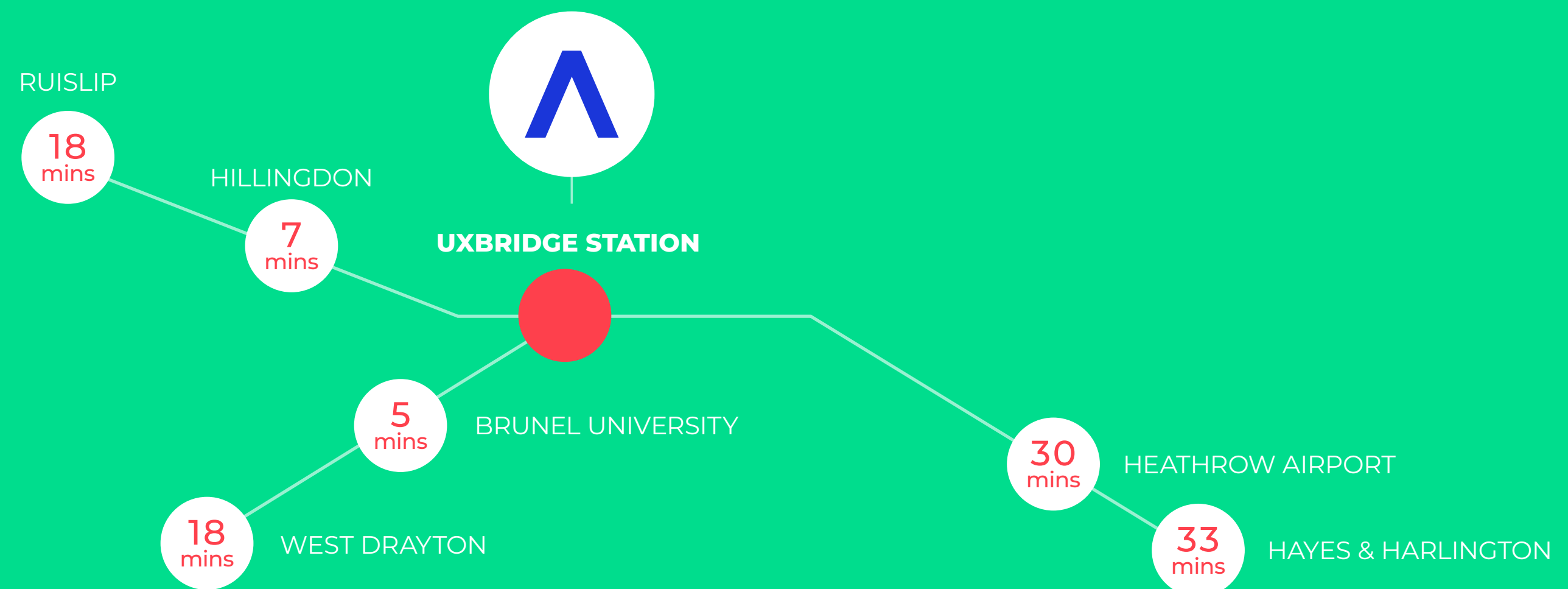
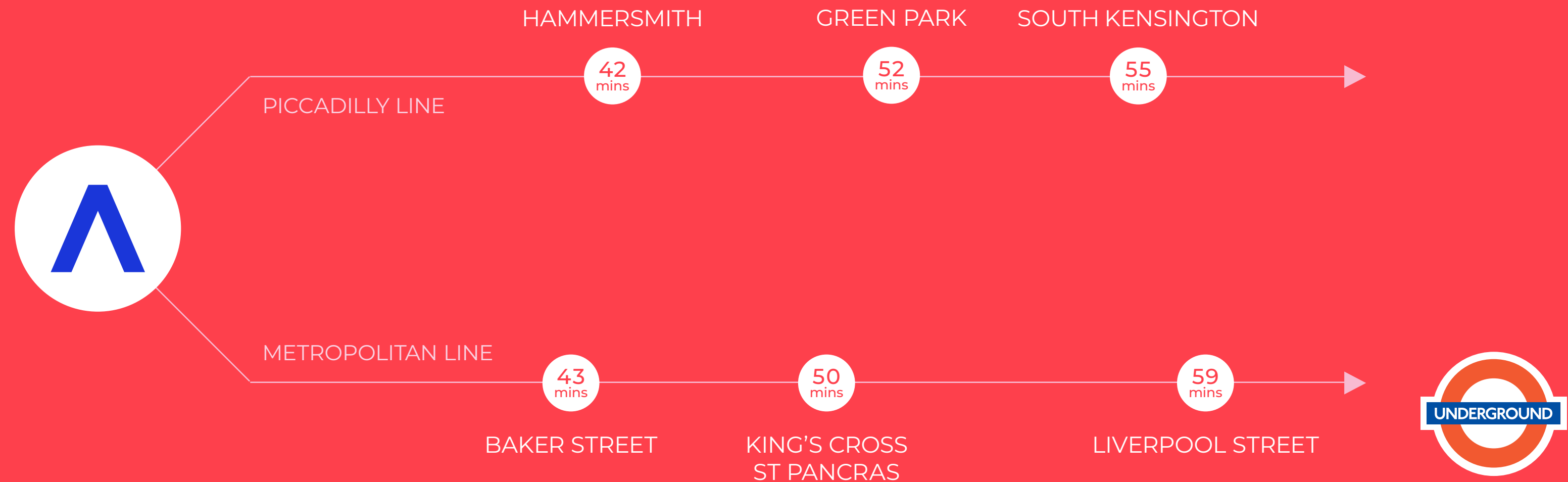
It's easy to get where you're going.

You're just moments away from Uxbridge Underground station, where Metropolitan and Piccadilly lines take you into the heart of London in under 45 minutes. The Elizabeth line opening at West Drayton station will improve services even more, providing direct trains to Paddington in just 20 minutes.

The M4, M40, and M25 are all close by, providing excellent access to the national road network.

Travelling further afield? Heathrow is six miles away and 13 minutes by car. There's also an extensive bus network providing access to Heathrow in just 30 minutes.

AMENITIES LOCATION CONNECTIONS



Arrange a viewing.

Strictly by appointment through the joint sole letting agents, BNP Paribas Real Estate and Bray Fox Smith



**BNP PARIBAS
REAL ESTATE**

Edward Smith

T: 020 7318 5136

M: 07836 656538

E: edward.smith@realestate.bnpparibas

Elliot McNish

T: 020 7629 7282

M: 07831 122846

E: elliot.mcnish@realestate.bnpparibas



Toby Lumsden

T: 020 7629 5456

M: 07796 444379

E: tobylumsden@brayfoxsmith.com

Richard Harding

T: 020 7629 5456

M: 07730 817019

E: richardharding@brayfoxsmith.com

Jordan Willcock

T: 020 7629 5456

M: 07745 054909

E: jordanwillcock@brayfoxsmith.com

Misrepresentation Act:

BNP Paribas Real Estate and BrayFoxSmith give notice that these particulars are set out as a general outline only for the guidance of intending Purchasers or Lessees and do not constitute any part of an offer or contract. Details are given without any responsibility and any intending Purchasers, Lessees or Third Party should not rely on them as statements or representations of fact, but must satisfy themselves by inspection or otherwise as to the correctness of each of them. No person employed or engaged by BNP Paribas Real Estate and BrayFoxSmith has any authority to make any representation or warranty whatsoever in relation to this property. March 2023.

Designed and produced by Graphicks | 020 3435 6952 | www.graphicks.co.uk