

bothams ¹⁸⁷¹

Parkway Plant Sales 
www.parkwayplantsales.com 07768 000 612
TAKEUCHI

Unit 6C Church View, Chesterfield, S45 9HA

£13,000 Per Annum



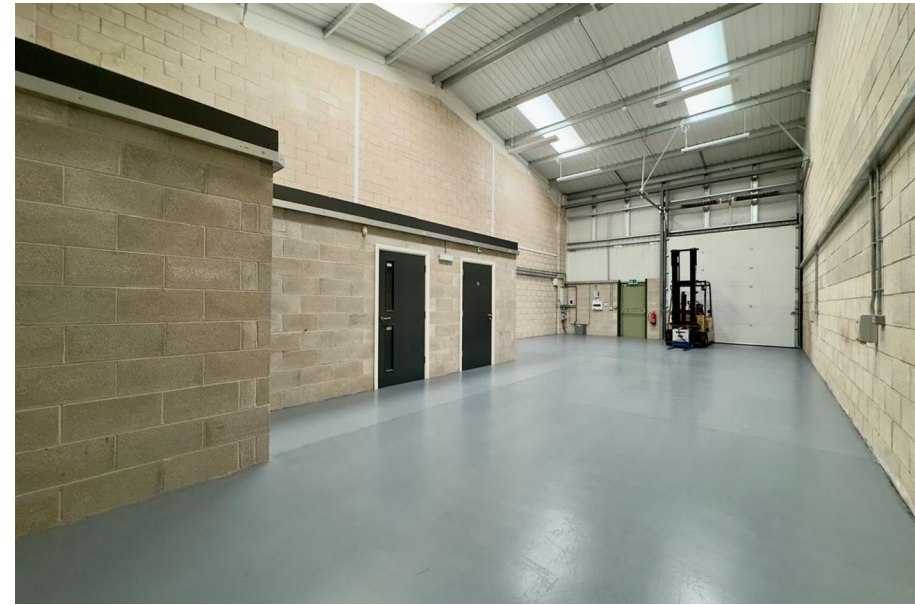


Unit 6C Church View

Chesterfield, S45 9HA

Modern and well-fitted industrial/ business unit of 1,279 SQ. FT., 118.81 SQ. M approx. GIA considered suitable for a wide variety of uses, set in a sought after and accessible location.

£13,000 Per Annum



Unit 6C Church View

Location

Accommodation

Possession

Services

Local Authority

Non-domestic Rates

References

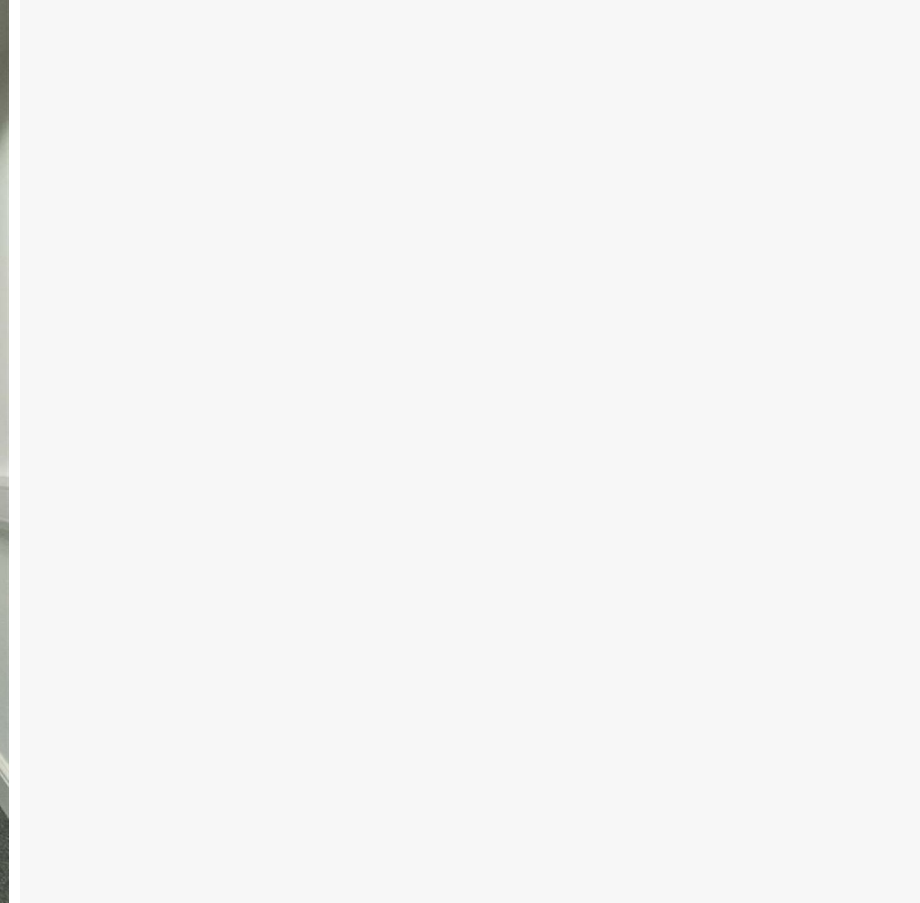
Costs

Insurance

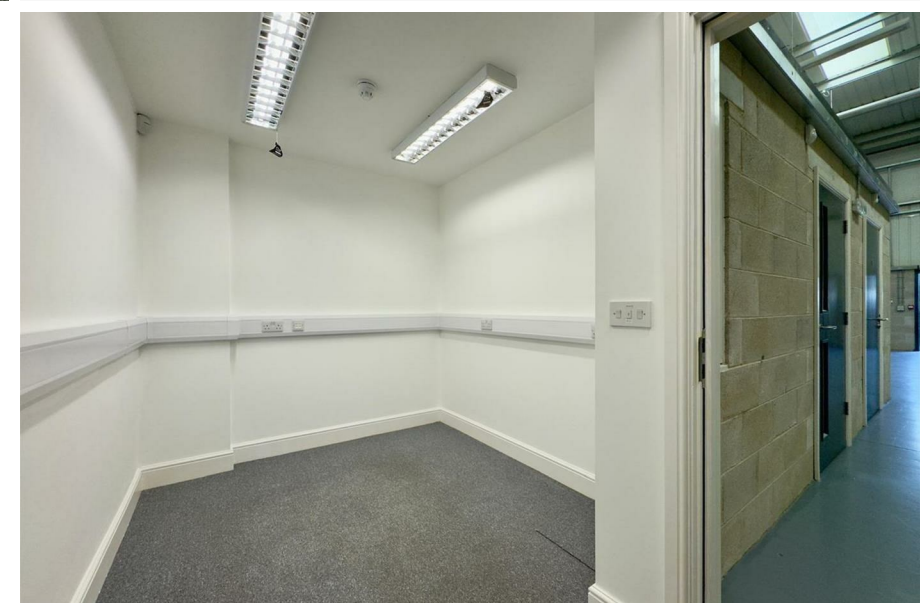
Estate Management Fee

VAT

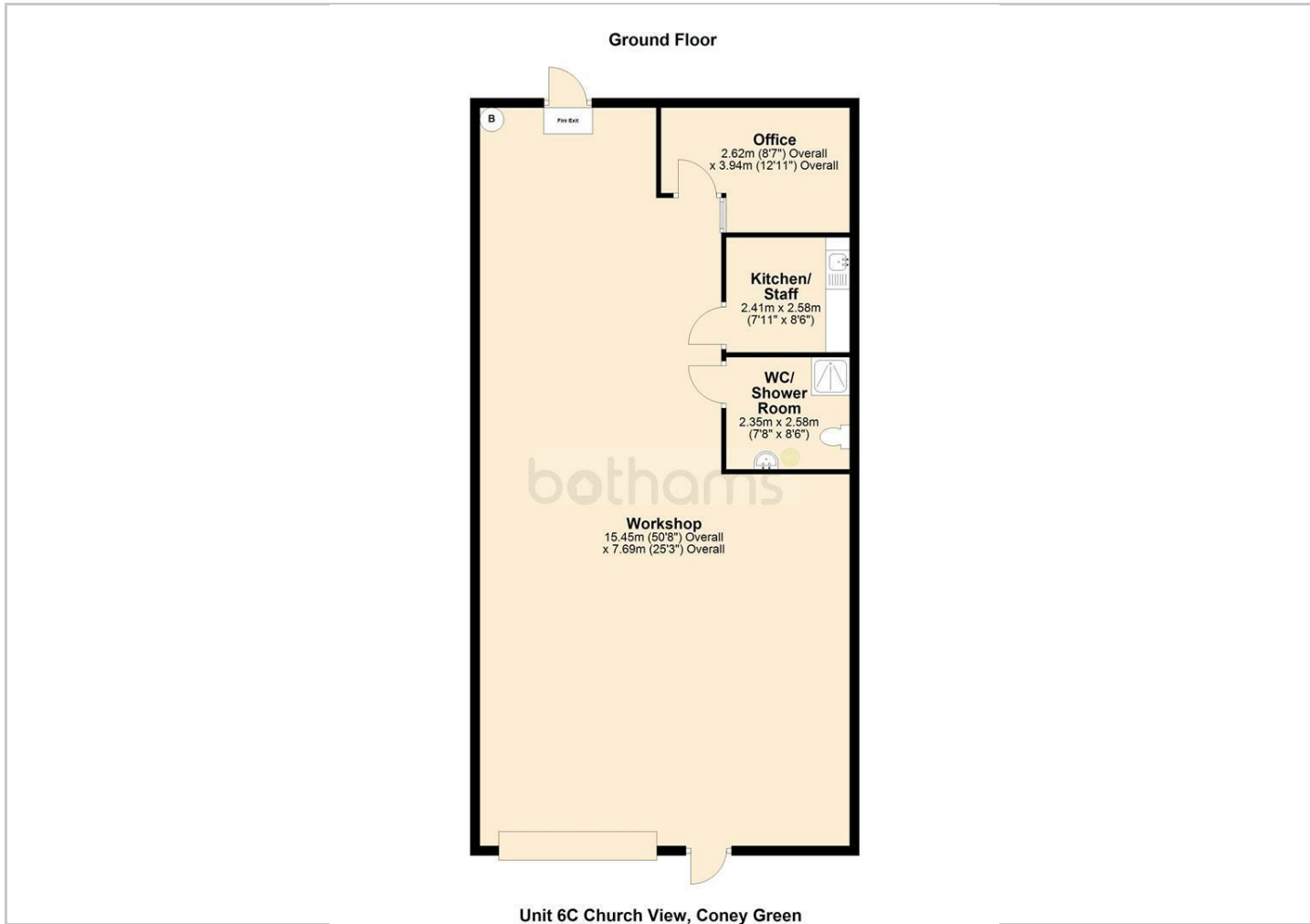
Material Information



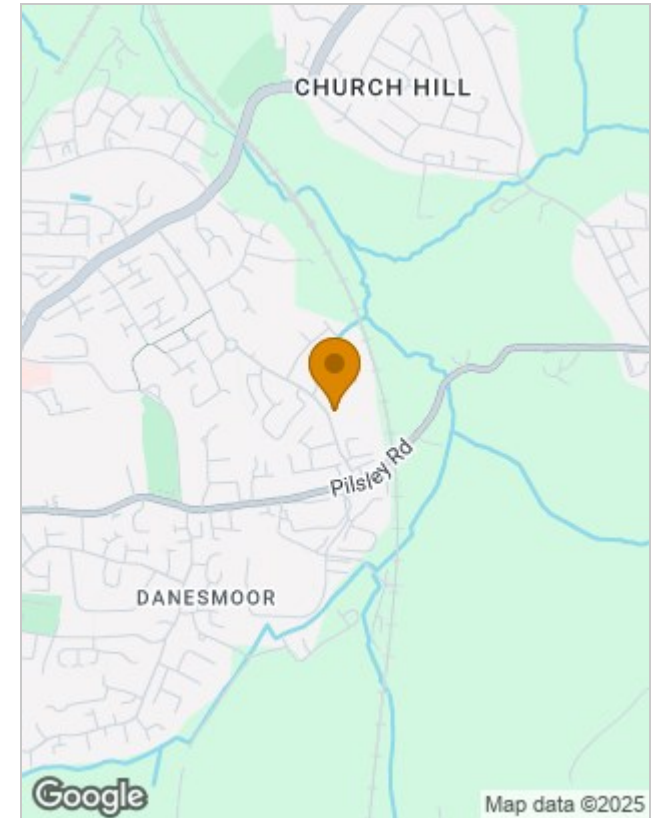
Directions



Floor Plans



Location Map



Energy Performance Graph

Energy Efficiency Rating		
	Current	Potential
<i>Very energy efficient - lower running costs</i>		
(92 plus) A		
(81-91) B		
(69-80) C		
(55-68) D		
(39-54) E		
(21-38) F		
(1-20) G		
<i>Not energy efficient - higher running costs</i>		
England & Wales	EU Directive 2002/91/EC	

Viewing

Please contact our Chesterfield Commercial Office on 01246 233121 if you wish to arrange a viewing appointment for this property or require further information.

The particulars are set out as a general outline only for the guidance of intended purchasers or lessees, and do not constitute, any part of a contract. Nothing in these particulars shall be deemed to be a statement that the property is in good structural condition or otherwise nor that any of the services, appliances, equipment or facilities are in good working order. Purchasers should satisfy themselves of this prior to purchasing.