

RETAIL UNIT TO LET

4-5 BEAUCHAMP PLACE SW3



£165,000
pax

Ground Floor
1282 sq ft
119 sq m

Basement
712 sq ft
66 sq m

Total
1994 sq ft
185 sq m



[Click here for
Virtual Tour](#)

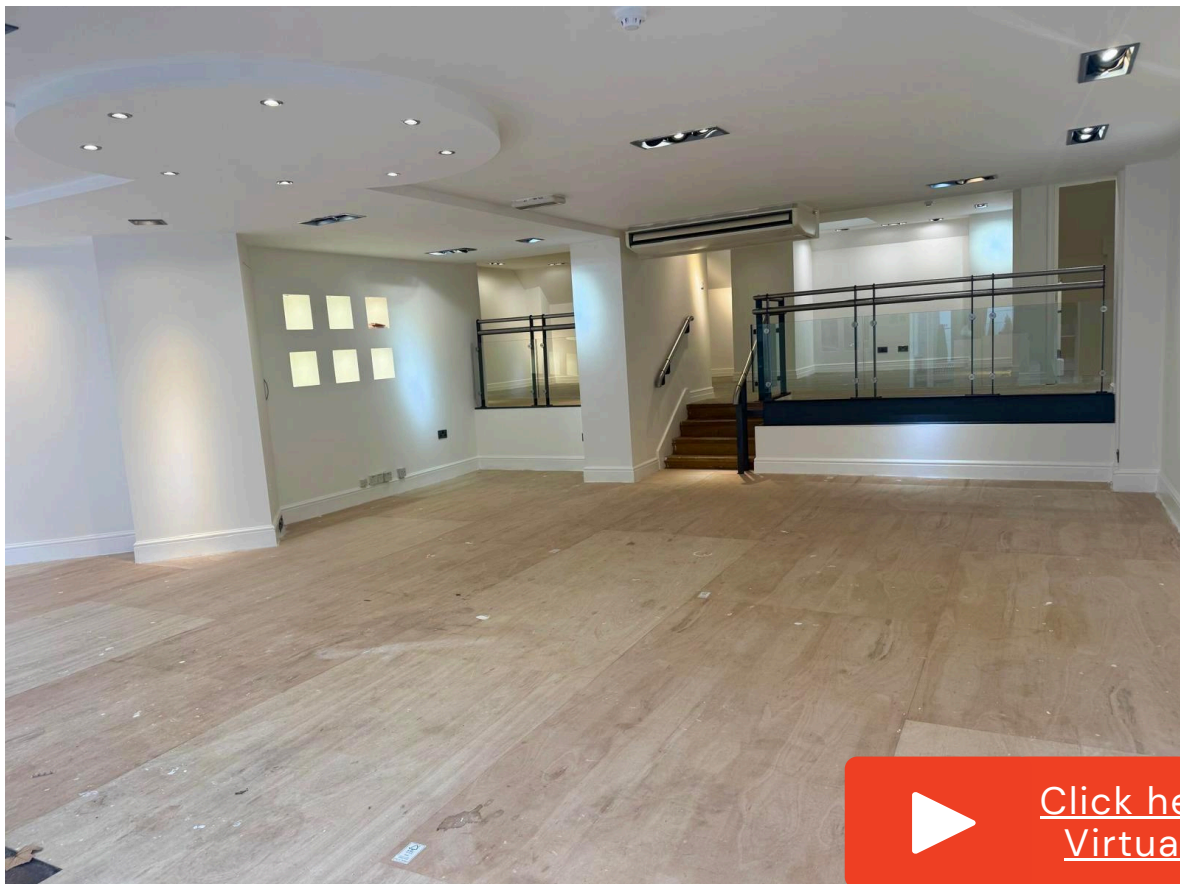
The property is prominently situated in the northern end of Beauchamp Place, just off Brompton Road, close to Harrods in the heart of Knightsbridge. Nearby retailers and restaurants include Lalage Beaumont, Caroline Charles, Patara, Medusa, The Beauchamp - Jaks and Maroush

[Click here for Street View](#)

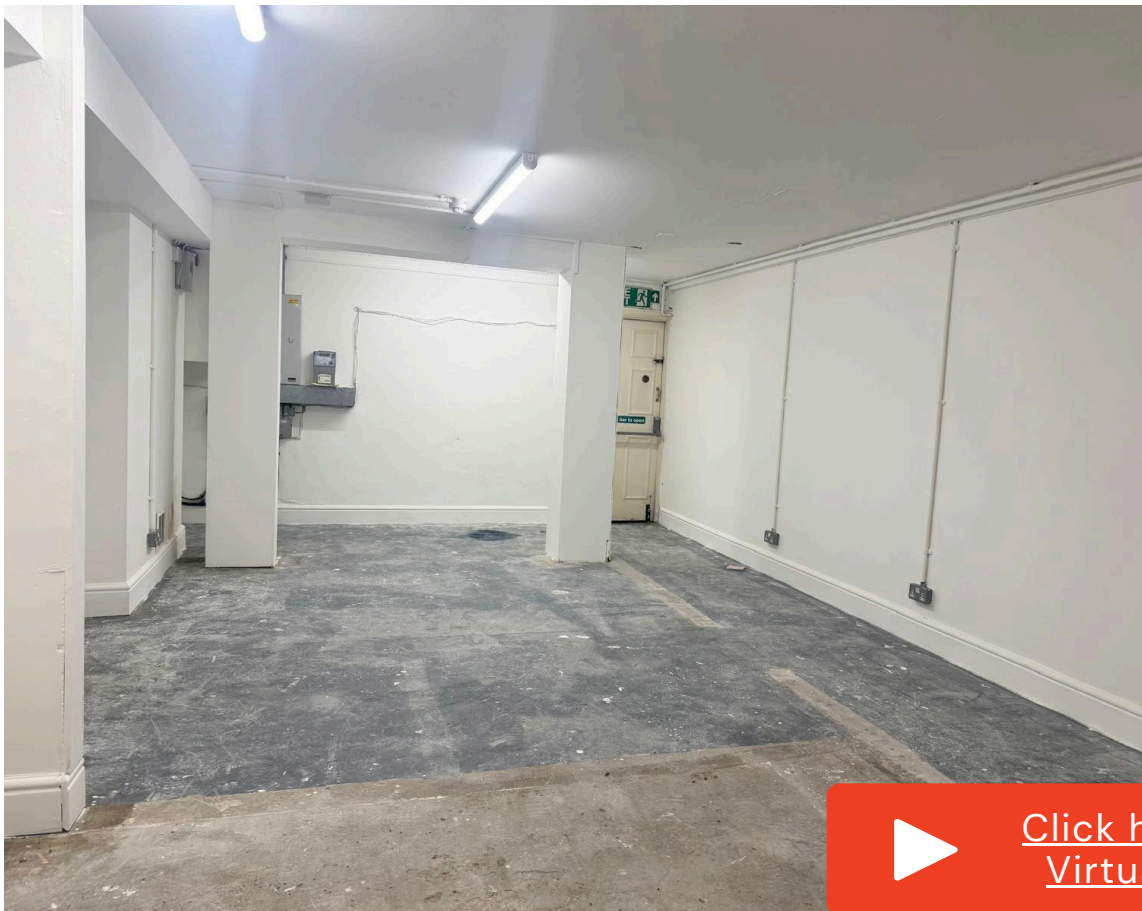
These particulars are for general guidance only. Sizes dimensions, descriptions and costs shown are approximate.

Floorplan for guidance only, not to scale or valuation purposes.

It must not be relied upon as a statement of fact. All measurements and areas are approximate.

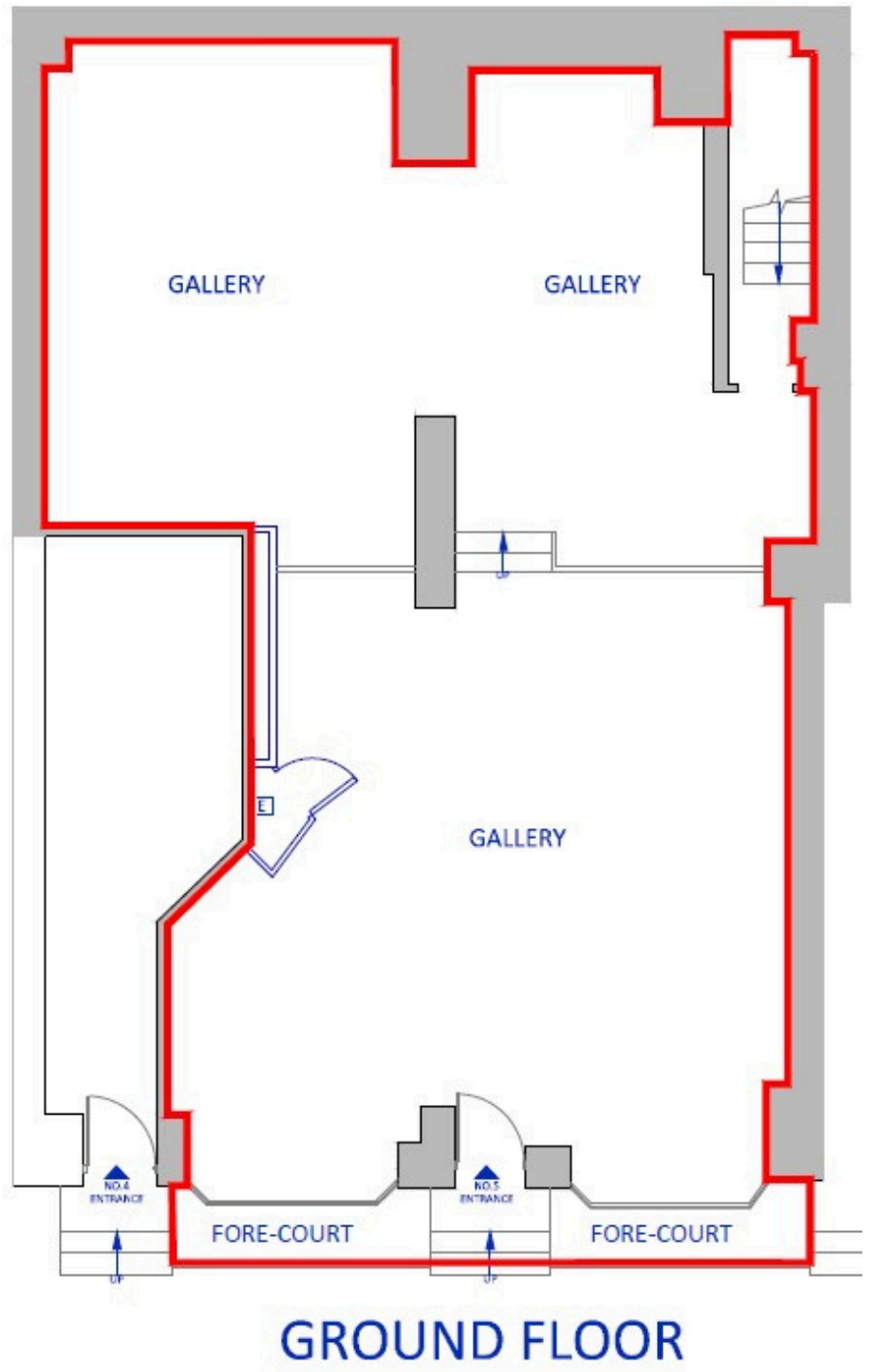
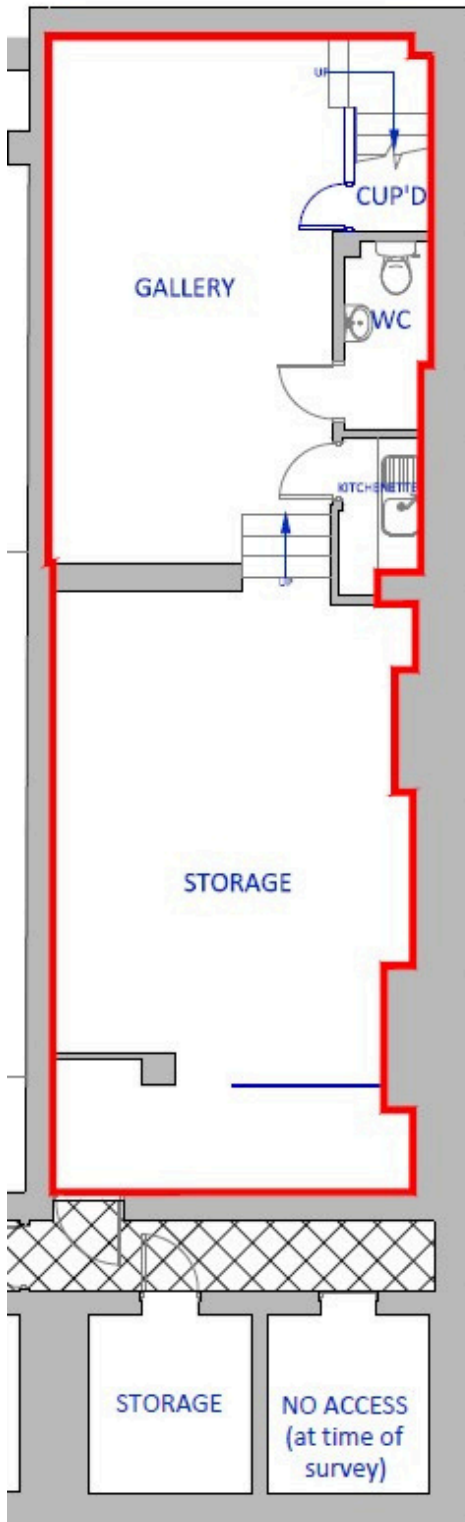


[Click here for
Virtual Tour](#)



[Click here for
Virtual Tour](#)

These particulars are for general guidance only. Sizes dimensions, descriptions and costs shown are approximate.
Floorplan for guidance only, not to scale or valuation purposes.
It must not be relied upon as a statement of fact. All measurements and areas are approximate.



 [Click here for Virtual Tour](#)

These particulars are for general guidance only. Sizes dimensions, descriptions and costs shown are approximate. Floorplan for guidance only, not to scale or valuation purposes. It must not be relied upon as a statement of fact. All measurements and areas are approximate.

LEASE

A new Full Repairing and Insuring lease for a term by arrangement. The new lease will be contracted outside the Landlord and Tenant Act 1954 (part 2) as amended.

BUSINESS RATES

Rateable Value - £115,000
Rates Payable - £66,125 (2025/26)



[Click here for
Virtual Tour](#)

Contact Us

Oliver Dodd

Ovington Property

07789 278 915

oliver@ovingtonproperty.com

Daniel Aboud

Savills

07972 000 240

daboud@savills.com

50 Beauchamp Place, Knightsbridge, London SW3 1NY

020 7589 5221 ovingtonproperty.com