

Quest House, 123-135 Staines Road, Hounslow TW3 3JB



TOWN CENTRE OFFICES - TO LET

2,000 – 5,055 sq ft (186 - 470 sq m)

- Entire first floor available
- Excellent car parking - 18 spaces (1:281 sq ft)
- Manned reception
- Shower

Tel: 020 8707 3030

www.desouza.co.uk

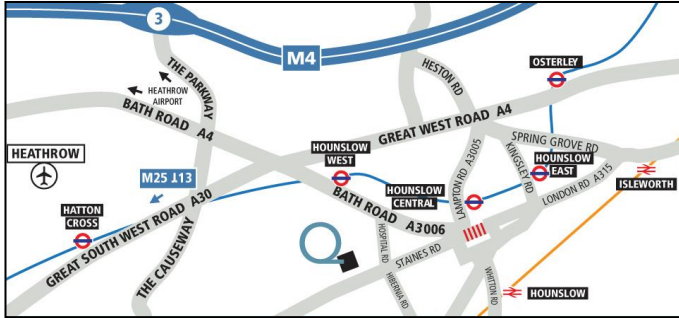
Heathrow Office: 3 Maple Grove Business Centre, Lawrence Road, Hounslow TW4 6DR

These details are intended as a guide only and must not be relied upon as statements of fact. They are not intended to constitute, nor constitute part of, an offer or contract. All prices and rents quoted are exclusive of VAT unless otherwise stated.

Location

Quest House is prominently located on Staines Road (A315) in Hounslow within walking distance of the town Centre.

It is also conveniently located for Hounslow Central (Piccadilly Line) and main line services at Hounslow Station.

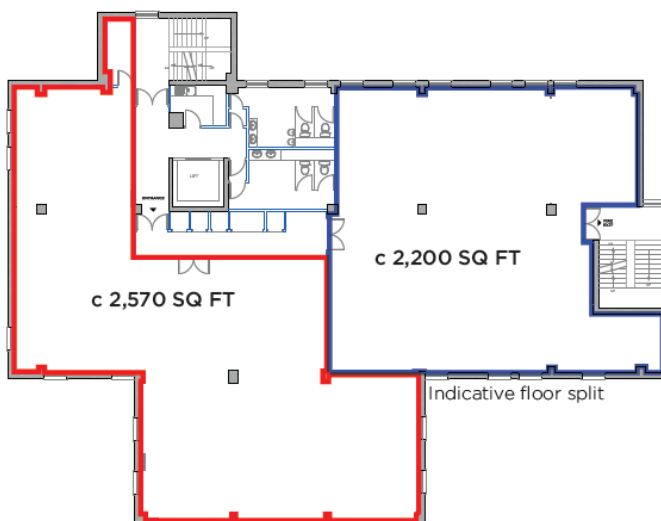


Description

Quest House is a self-contained office building arranged over 5 floors with secure basement and surface level parking and manned reception.

The available accommodation comprises the entire 1st floor which extends to 5,055 sq ft (net internal area). The floor provides a good mix of open plan, separate offices and meeting rooms and could be subdivided to accommodate smaller requirements.

1st Floor Plan



EPC

Energy Performance Rating – D92



Amenities

- Refurbished offices
- Manned Reception
- Kitchenette Shower & WC's
- Double Glazed Windows
- 4 Pipe Fan Coil Conditioning
- 18 allocated car parking spaces (1:281 sq ft)

Terms

Lease - Available on a new lease direct with the landlord.

Rent - £20.50 per sq ft per annum exclusive



Contact

Paul Flannery

E: paulf@desouza.co.uk

T: 020 8707 3030

M: 07946 422920

Or joint agent Lambourn Commercial 020 3752 7569