

IWG Availability September 2025

IWG International
Workplace
Group

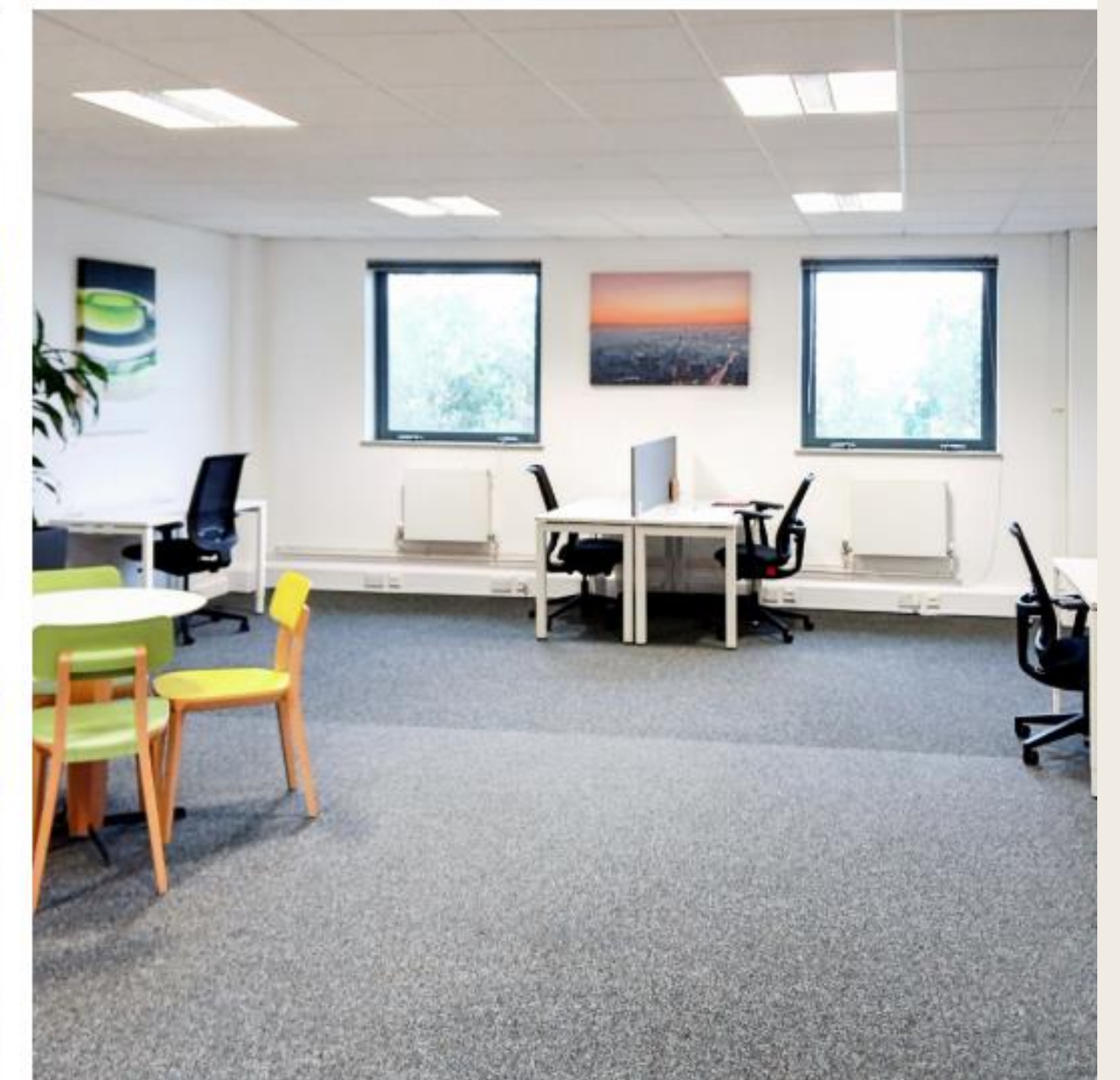
CENTRE/ CLUSTER INFO

Base Point

Evesham Vale Park

Evesham Basepoint offers 17,693 sq.ft of high-quality workspace, designed to support businesses of all sizes with full reception services and on-site management. The centre provides a wide range of flexible options, from standard offices and studios to specialist incubator units for start-ups, large office suites, coworking areas, and Virtual Office support. Professional meeting rooms and an executive boardroom are available to hire from as little as one hour, making it easy to host clients or team sessions.

Located within easy reach of the M5, Evesham Basepoint is perfectly positioned for fast access to Cheltenham, Gloucester, Worcester, and Birmingham. This popular site combines convenience, flexibility, and professional support—making it an ideal base for growing businesses.



Base Point Tewkesbury

Basepoint Tewkesbury – Versatile Workspace in a Prime Location

Located at **Tewkesbury Business Park**, right next to Junction 9 of the M5, Basepoint Tewkesbury offers exceptional connectivity to the Midlands and South West, while being just moments from the charm and amenities of the historic market town of Tewkesbury.

The centre features **69 managed business units**, thoughtfully designed to suit a wide range of uses—from offices and studios to workshops—making it ideal for businesses across all sectors. For larger teams, a spacious **1,600 sq.ft open-plan office** is available, complete with an integrated meeting room.

In addition to physical office space, Basepoint Tewkesbury offers **Virtual Office packages** and **serviced meeting rooms**, bookable from as little as one hour—perfect for remote teams or client visits.



Key Features:

- 39 Private offices
- 18 Coworking desks
- 16 Workshops
- For larger teams, a spacious **142m² 47 workstations open-plan office** is available, complete with an integrated meeting room.
- Flexible workspaces available from coworking desks to private offices and workshops, designed to support businesses of all sizes and sectors.

Included in the office price:

- 24/7 secure access
- Water, gas, heating, and daily cleaning
- High-speed broadband & business-grade IT
- Support from our on-site Centre Operations team
- Flexibility to expand or relocate to any IWG location
- Access to community events across all Basepoint centres
- Use of the Basepoint/Regus network of 3,500+ global locations

Additional benefits:

- Office and workshop space available across multiple units
- On-site parking for staff and visitors
- Stylish business lounge for informal meetings and networking
- Dog-friendly environment
- Serviced meeting rooms bookable from as little as one hour
- Virtual Office packages available for remote teams
- Complimentary **Hussle gym memberships**
- Annual **Bupa health assessments** for all team members



Regus Bishops Cleeve

The Manor House, Cheltenham – Elegant Workspace in a Prime Location

Choose Cheltenham as your business hub and elevate your working environment at **The Manor House**, a stunning Grade II listed building that blends classical charm with modern functionality. Located just off the A435 and only four minutes from the iconic Cheltenham Racecourse, this prestigious site offers excellent visibility and convenience for visiting clients.

Enjoy seamless connectivity with two major train stations within a ten-minute drive and a nearby bus stop just a short walk away. The Manor House is surrounded by thriving business parks and offers easy access to Gloucester and Birmingham—just an hour away—making it a strategic location for growth and networking.

Step into a workspace that's as inspiring as it is practical. With **private and shared offices spread across four floors**, you'll find ready-to-use areas that suit your business needs, whether you're a solo entrepreneur or part of a growing team. The building's grand fireplaces, exposed wooden beams, and elegant windows overlooking the scenic grange create a truly unique working atmosphere.



Key Features:

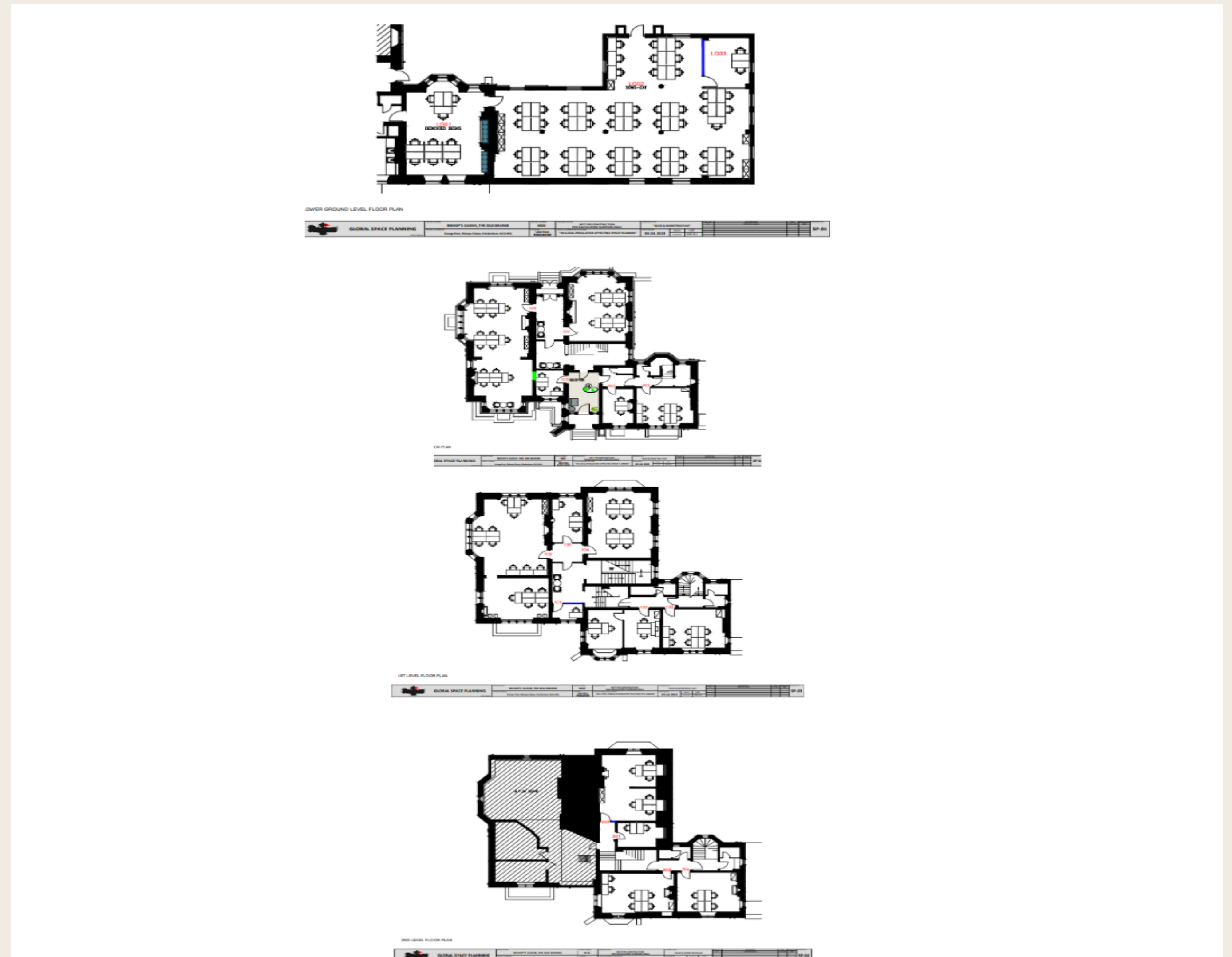
- 39 Private offices
- 18 Coworking desks
- Choose from a range of office sizes—from coworking desks to a spacious **170 m² 60-desk office**, designed to accommodate teams of all sizes. Work across four beautifully restored floors, featuring grand fireplaces, exposed beams, and scenic views, all supported by a professional on-site team.

Included in the office price:

- Business rates, utilities, and cleaning costs
- 24/7 secure access
- Fully furnished office space
- High-speed broadband & business-grade IT infrastructure
- Support from our Centre Operations team
- Flexible expansion options
- Relocation flexibility across the IWG network
- Access to community events across all Basepoint centres
- Use of 4,000+ IWG locations worldwide
- 2 hours of free meeting room use daily (subject to availability)
- On-site parking for staff and visitors

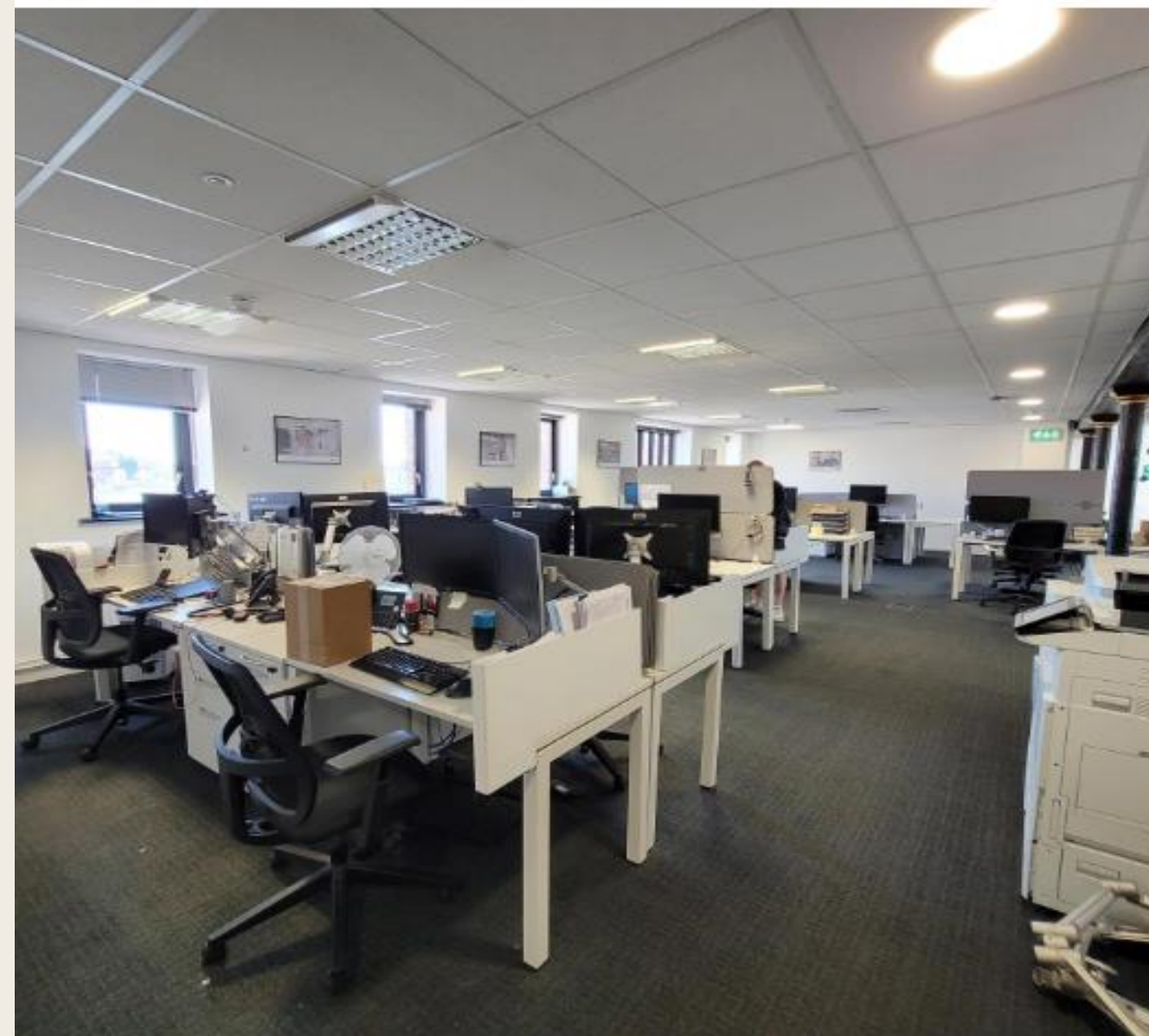
Additional benefits (included with 6-month+ agreements):

- Complimentary **Hussle gym memberships**
- Annual **Bupa health assessments** for all team members



Regus Gloucester Docks

Located in the heart of Gloucester Docks, the **North Warehouse** is a beautifully restored 1827 building offering a unique blend of heritage and modern workspace. Ideal for businesses seeking character and convenience, this Regus centre combines exposed brickwork and contemporary design with stunning waterfront views. Work in style, with vintage exposed brickwork contrasting against bright, modern furniture and artwork. And feed your ideas with beautiful views over the historic docks and waterfront. Grab a bite to eat, take a lunchtime stroll in the surrounding streets and soak up the area's maritime history. After work, walk to central Gloucester in minutes for a wide choice of shops, bars and dining spots



Key Features:

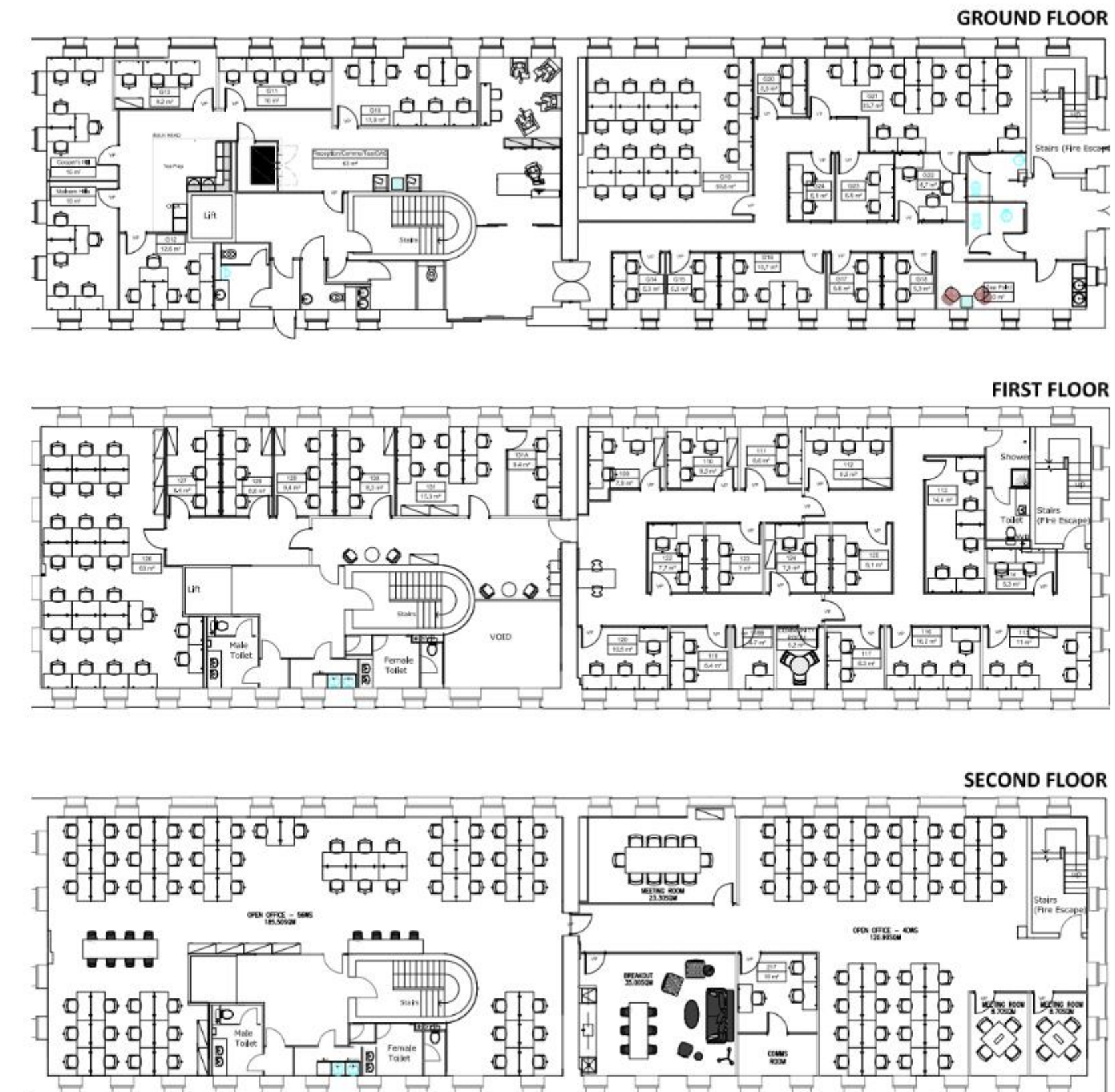
- 39 private offices
- 18 coworking desks
- Free on-site parking
- Largest office (430 sqm) available **October 2025** – top floor with panoramic dockside views
- Fully furnished with modern décor

Included in the office price:

- Business rates, utilities, and cleaning costs
- 24/7 secure access
- Fully furnished office space
- High-speed broadband & business-grade IT infrastructure
- Support from our Centre Operations team
- Flexible expansion options
- Relocation flexibility across the IWG network
- Access to community events across all Basepoint centres
- Use of 4,000+ IWG locations worldwide
- 2 hours of free meeting room use daily (subject to availability)
- On-site parking for staff and visitors
- Design Your Office available

Additional benefits (included with 6-month+ agreements):

- Complimentary **Hussle gym memberships**
- Annual **Bupa health assessments** for all team members



Regus Conway House

Welcome to Conway House – Where Work Meets Inspiration

Base your business at **Conway House**, a premium workspace in the heart of Gloucester offering breathtaking views of the iconic **Gloucester Cathedral**. Just a **five-minute stroll from the train station**, this location combines convenience with character, making your daily commute effortless and enjoyable.

Step into a bright, modern environment filled with **natural light streaming through large windows**, creating a vibrant and energizing atmosphere. Whether you're hosting clients or brainstorming with your team, the **comfortable lounge and breakout spaces** offer the perfect setting to spark creativity and collaboration.

Conway House offers:

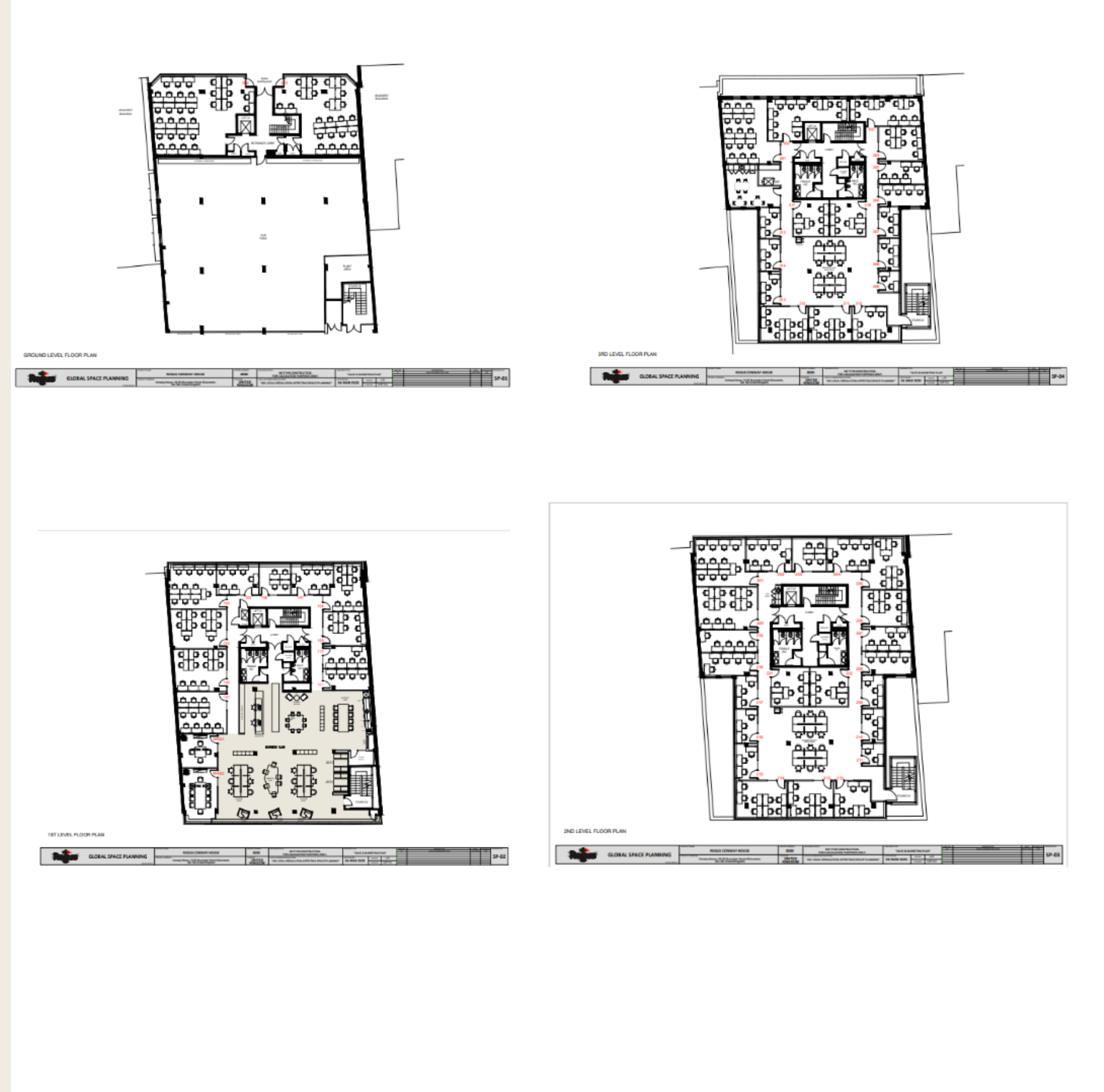
- **54 private offices**
- **25 coworking desks**
- **A large office space (80m²) with 30 workstations** – ideal for growing teams

Whether you're a freelancer, a startup, or an established business, Conway House provides the flexibility, style, and location to help your business thrive.



Key Features:

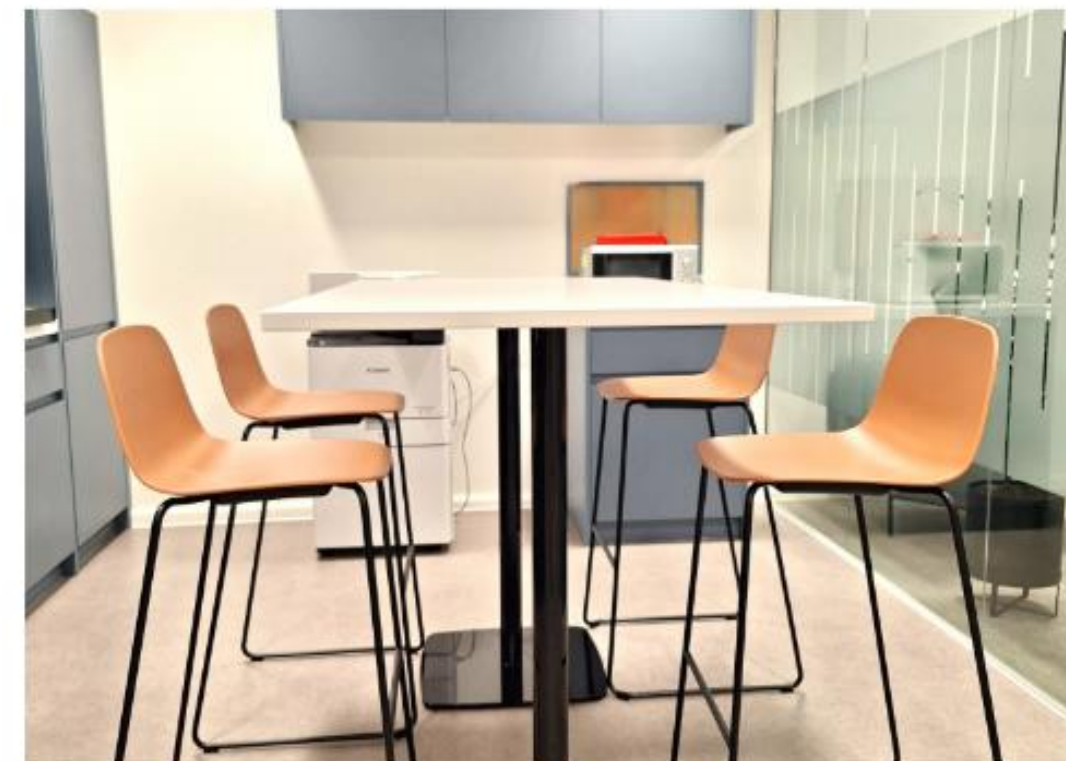
- **54 private offices**
 - **25 coworking desks**
 - **A large office space (80m²) with 30 workstations**
- Whether you're a freelancer, a startup, or an established business, Conway House provides the flexibility, style, and location to help your business thrive.
- Included in the office price:**
- Business rates, utilities, and cleaning costs
 - 24/7 secure access
 - Fully furnished office space
 - High-speed broadband & business-grade IT infrastructure
 - Support from our Centre Operations team
 - Flexible expansion options
 - Relocation flexibility across the IWG network
 - Access to community events across all Basepoint centres
 - Use of 4,000+ IWG locations worldwide
 - 2 hours of free meeting room use daily (subject to availability)
 - On-site parking for staff and visitors
 - Design Your Office available
- Additional benefits (included with 6-month+ agreements):**
- Complimentary **Hussle gym memberships**
 - Annual **Bupa health assessments** for all team members



Regus Olympus House

Elevate Your Business at Olympus House – Premium Office Space in Quedgeley

Drive your brand forward with high-quality office space at **Olympus House**, located in the thriving **Olympus Business Park** in Quedgeley. Designed with business in mind, this professional hub offers a strategic base with **easy access to the A38 and M5 motorway**, placing you just minutes from Gloucester city centre and key transport links. Step into a **fully furnished, high-tech workspace** featuring smart interiors, ergonomic furniture, and **business-grade WiFi** – everything you need to hit the ground running. Whether you're a solo entrepreneur or part of a growing team, Olympus House provides a flexible environment to suit your needs.



Key Features:

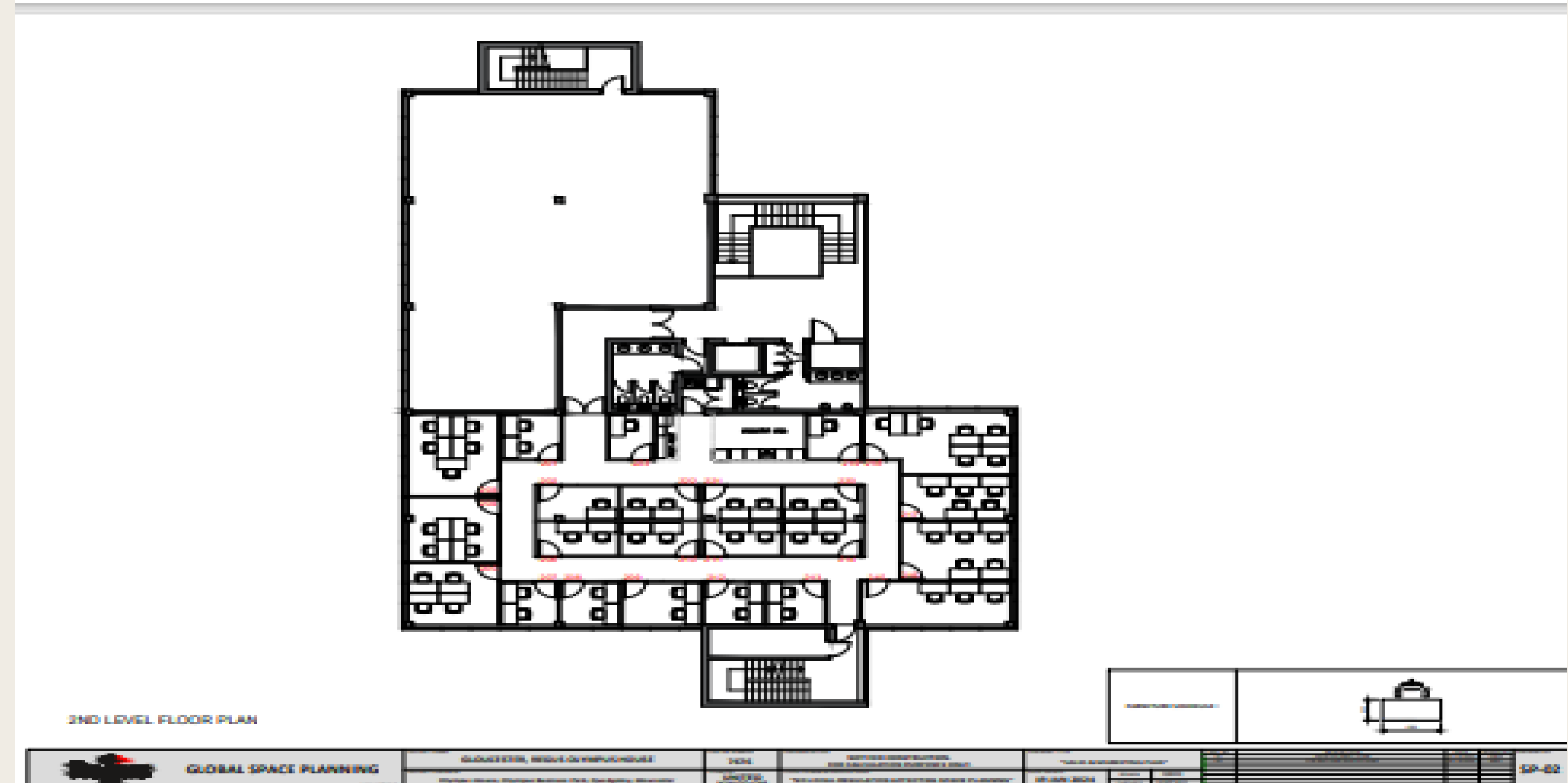
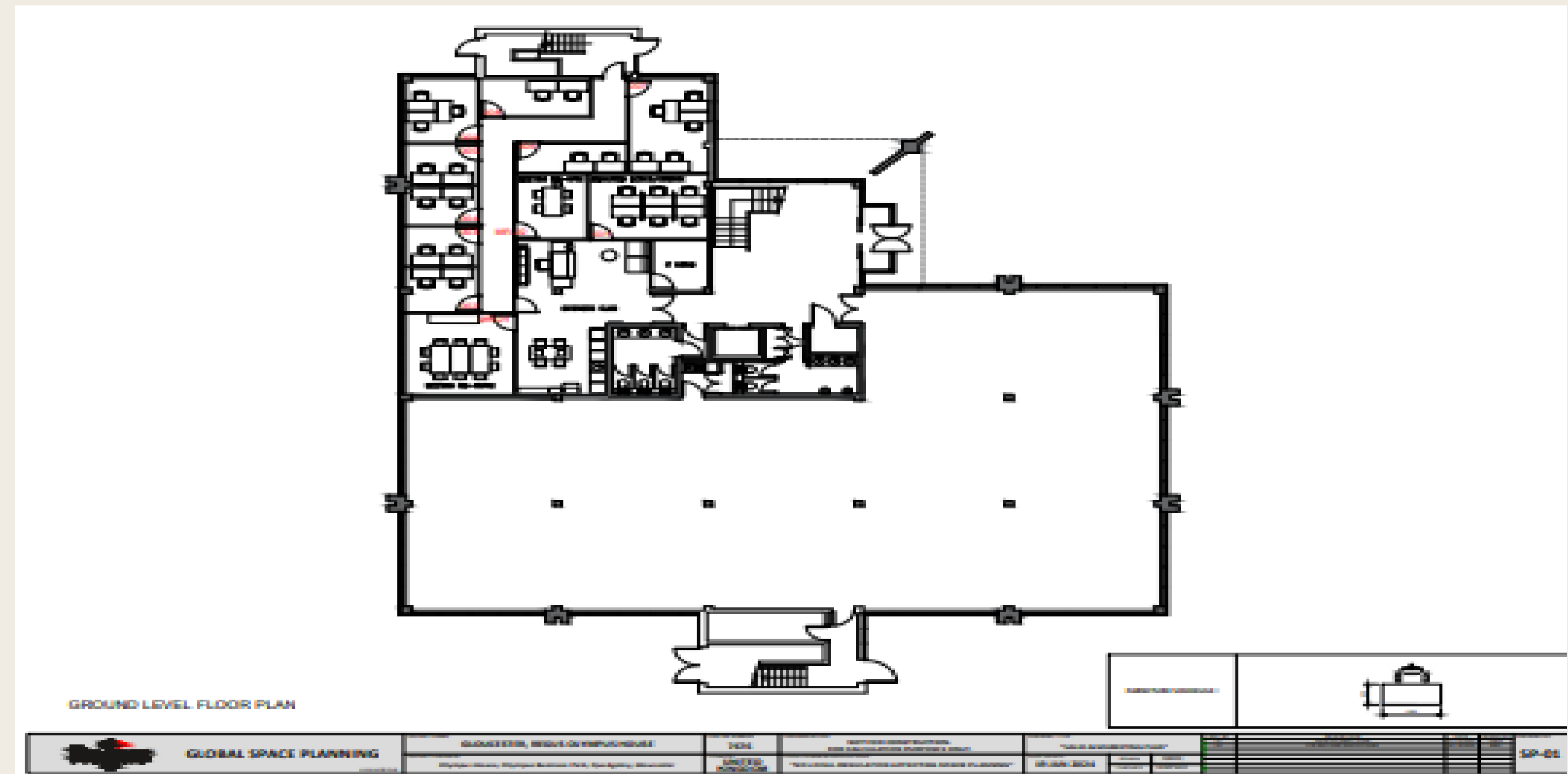
- **33 private offices**
- **7 coworking desks**
- A range of **smaller offices** ideal for startups and agile teams

Included in the office price:

- Business rates, utilities, and cleaning costs
- 24/7 secure access
- Fully furnished office space
- High-speed broadband & business-grade IT infrastructure
- Support from our Centre Operations team
- Flexible expansion options
- Relocation flexibility across the IWG network
- Access to community events across all Basepoint centres
- Use of 4,000+ IWG locations worldwide
- 2 hours of free meeting room use daily (subject to availability)
- On-site parking for staff and visitors
- Design Your Office available

Additional benefits (included with 6-month+ agreements):

- Complimentary **Hussle gym memberships**
- Annual **Bupa health assessments** for all team members





Thank you